

DRAWING NO. SHO-P01

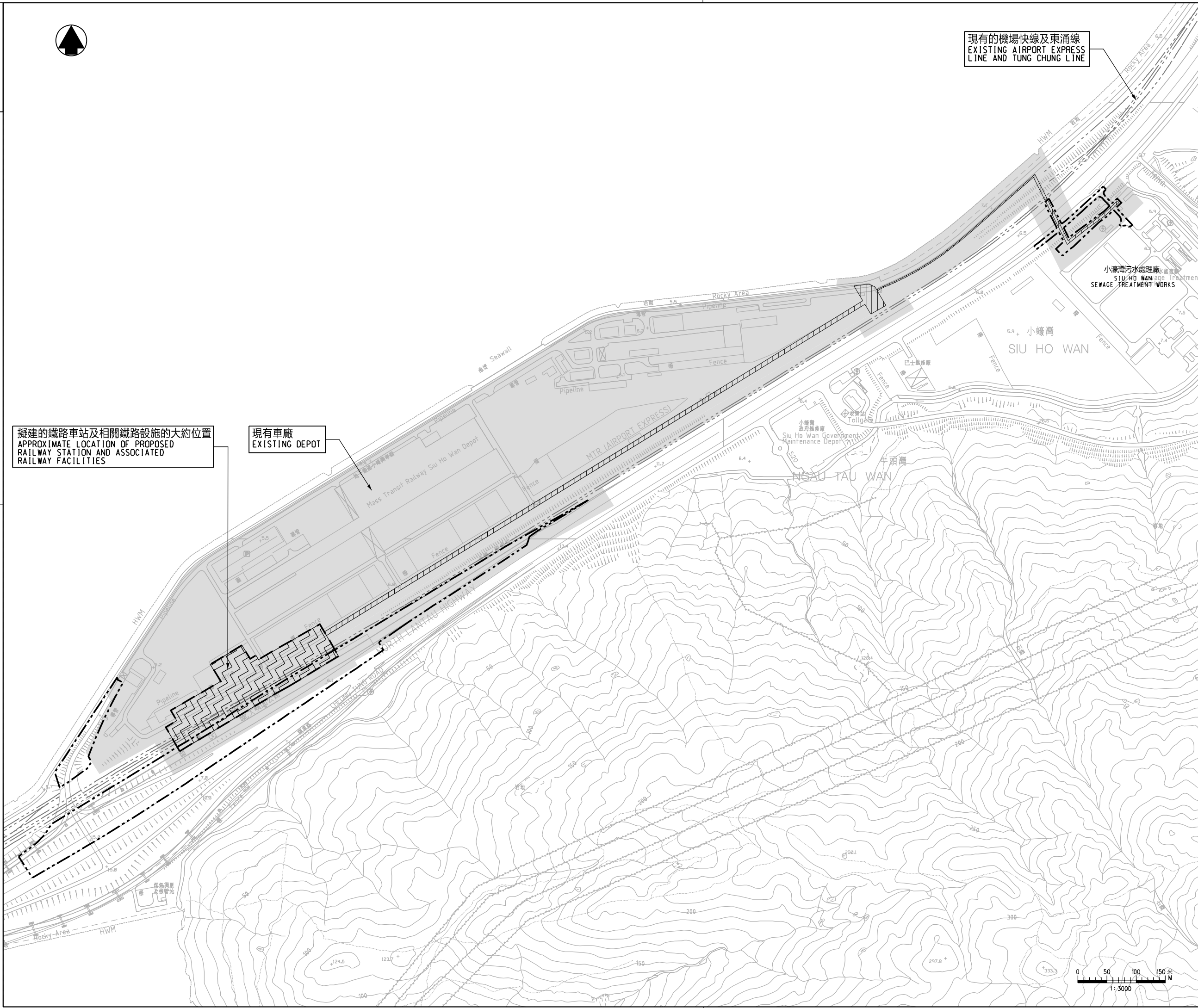


現有的機場快線及東涌線
EXISTING AIRPORT EXPRESS
LINE AND TUNG CHUNG LINE

擬建的鐵路車站及相關鐵路設施的大約位置
APPROXIMATE LOCATION OF PROPOSED
RAILWAY STATION AND ASSOCIATED
RAILWAY FACILITIES

現有車廠
EXISTING DEPOT

- 圖例 LEGEND :**
- 方案界線
BOUNDARY OF THE SCHEME
 - 擬建的鐵路車站及相關鐵路設施
PROPOSED RAILWAY STATION
AND ASSOCIATED RAILWAY FACILITIES
 - 就建築工程 (包括在方案界線以外進行的建築工程)
與方案或鐵路營運或維修不相容, 可行使建築
圖則或建築工程展開圖則的土地範圍
AREA OF LAND ON WHICH CONTROL OF
BUILDING PLANS OR COMMENCEMENT OF
BUILDING WORKS INCLUDING BUILDING WORKS
OUTSIDE THE BOUNDARIES OF THE SCHEME
WHICH ARE INCOMPATIBLE WITH THE SCHEME
OR THE OPERATION OR MAINTENANCE OF THE
RAILWAY MAY BE REQUIRED
 - 擬建的鐵路設施 (地下)
PROPOSED RAILWAY FACILITIES (UNDERGROUND)
 - 現有的鐵路線軌中線
EXISTING RAILWAY TRACK CENTRE LINE



修訂表
TABLE OF AMENDMENTS

修改 REV	日期 DATE	繪圖 BY	核對 SUB	負責 APP	說明 DESCRIPTION

SIGNED
魏漢華 NGAI HON WAH
獲准發出
APPROVED FOR ISSUE
2 JUN 2021
發出日期 DATE OF ISSUE

圖則名稱 DRAWING TITLE
**鐵路條例(第519章)
位於小蠔灣的鐵路車站
控制建築圖則及工程展開圖則**
RAILWAYS ORDINANCE (CHAPTER 519)
RAILWAY STATION AT SIU HO WAN
CONTROL OF BUILDING PLANS AND
COMMENCEMENT OF WORK PLAN

圖號 DRAWING NO. SHO-P01
比例 SCALE 1:3000 (A1)
或如圖示
AS SHOWN

香港特別行政區政府
THE GOVERNMENT OF THE HONG KONG
SPECIAL ADMINISTRATIVE REGION
路政署
HIGHWAYS DEPARTMENT
鐵路拓展處
RAILWAY DEVELOPMENT OFFICE

