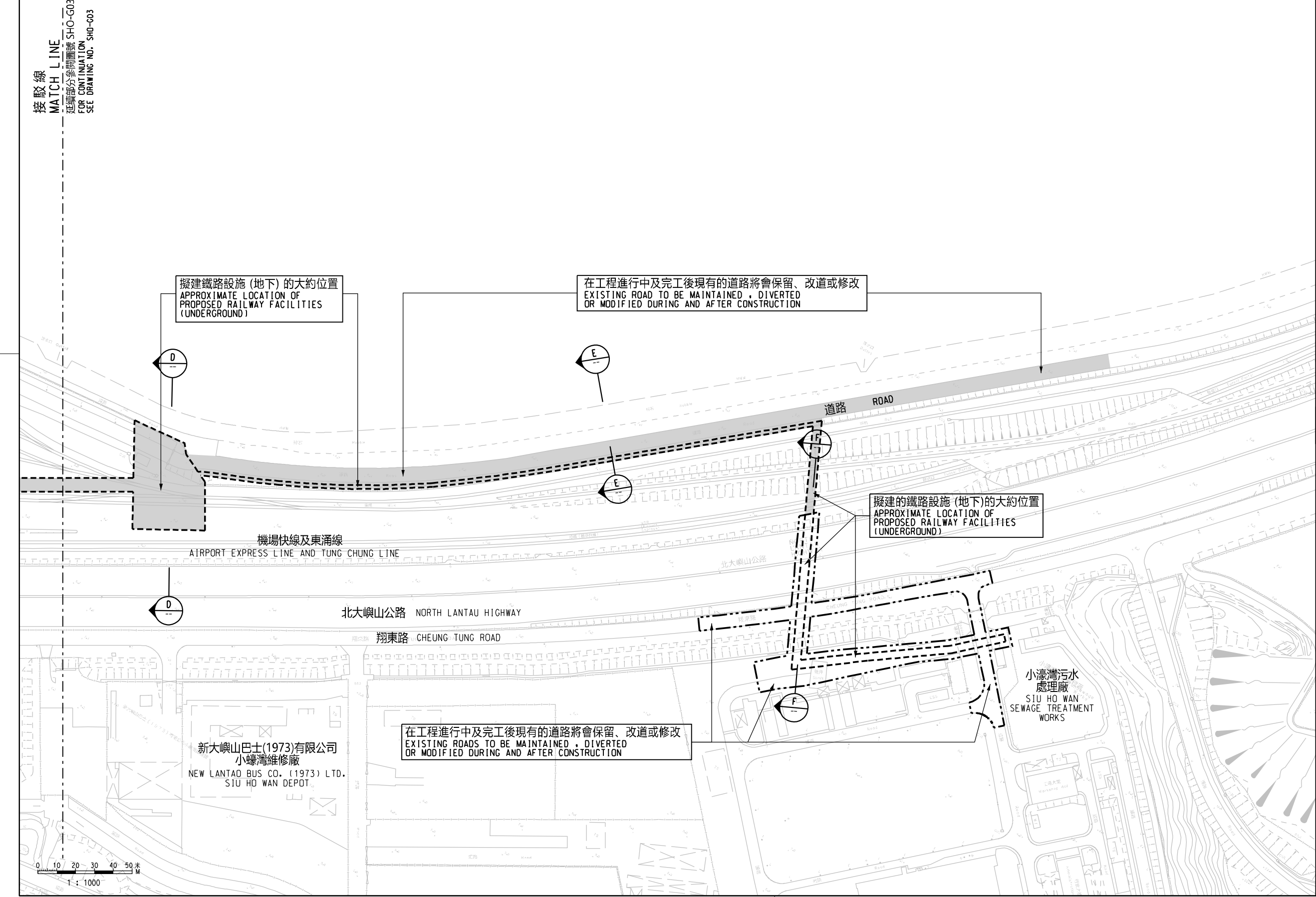


- 圖例 LEGEND :
- 方案界線
BOUNDARY OF THE SCHEME
 - 擬建的鐵路車站及其設施
PROPOSED RAILWAY STATION AND ASSOCIATED FACILITIES
 - 擬建的鐵路設施(地下)
PROPOSED RAILWAY FACILITIES (UNDERGROUND)
 - 在現有鐵路範圍內的擬建工程
(在此範圍內的所有擬建鐵路工程並不屬於方案部分)
PROPOSED WORKS WITHIN THE EXISTING RAILWAY AREA
(ALL PROPOSED RAILWAY WORKS WITHIN THIS AREA ARE NOT PART OF THE SCHEME)



一般說明 GENERAL NOTES

1. 有關一般說明參閱圖號 SHO-G01.
FOR GENERAL NOTES, REFER TO DRAWING NO. SHO-G01.

修訂表
TABLE OF AMENDMENTS

修改 REV	日期 DATE	繪圖 BY	核對 SUB	負責 APP	說明 DESCRIPTION

SIGNED

魏漢華 NGAI HON WAH
路政署
鐵路拓展處處長(2)
GOVERNMENT ENGINEER/
RAILWAY DEVELOPMENT (2)
HIGHWAYS DEPARTMENT

2 JUN 2021
發出日期 DATE OF ISSUE

圖則名稱 DRAWING TITLE

鐵路條例(第519章)
位於小濠灣的鐵路車站
總體規劃圖則 4頁的第4頁

RAILWAYS ORDINANCE (CHAPTER 519)
RAILWAY STATION AT SIU HO WAN

GENERAL LAYOUT PLAN SHEET 4 OF 4

圖號 DRAWING NO.

SHO-G04

比例 SCALE
1:1000 (A1)
或如圖示
AS SHOWN

香港特別行政區政府
THE GOVERNMENT OF THE HONG KONG
SPECIAL ADMINISTRATIVE REGION

路政署
HIGHWAYS DEPARTMENT

鐵路拓展處
RAILWAY DEVELOPMENT OFFICE