



在工程進行中及完成後將會保留、
改道或修改的現有車輛通道
EXISTING VEHICULAR ACCESS TO BE
MAINTAINED, DIVERTED OR MODIFIED
DURING AND AFTER CONSTRUCTION

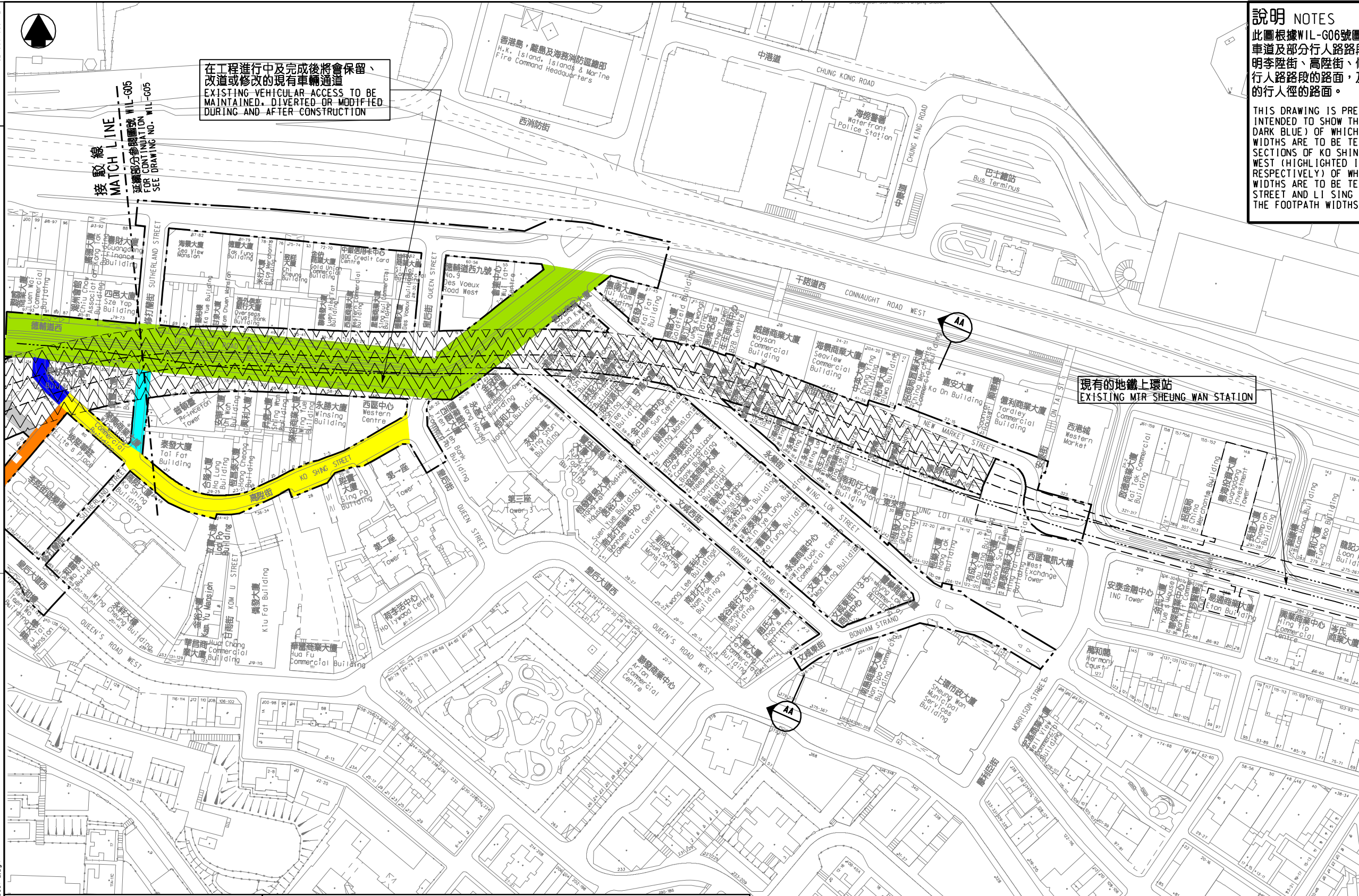
接駁線
MATCH LINE
— WIL-G06
— WIL-G05
FOR CONTINUATION
SEE DRAWING NO. WIL-G05

說明 NOTES

此圖根據WIL-G06號圖則制訂，以深藍色標明高陞街將暫時封閉的
車道及部分行人路路綫，分別以橙色、黃色、淺藍色和綠色標
明李陞街、高陞街、修打蘭街和德輔道西將暫時封閉的部分車道及
行人路路綫，以及以灰色標明介乎威利麻街與李陞街將暫時封閉
的行人徑路綫。
THIS DRAWING IS PREPARED BASED ON DRAWING NO. WIL-G06 AND IS
INTENDED TO SHOW THE SECTION OF KO SHING STREET (HIGHLIGHTED IN
DARK BLUE) OF WHICH THE CARRIAGEWAYS AND PARTS OF THE FOOTPATH
WIDTHS ARE TO BE TEMPORARILY CLOSED, AND LI SING STREET AND
SECTIONS OF KO SHING STREET, SUTHERLAND STREET AND DES VOEUX ROAD
WEST (HIGHLIGHTED IN ORANGE, YELLOW, LIGHT BLUE AND GREEN
RESPECTIVELY) OF WHICH PARTS OF THE CARRIAGEWAY AND FOOTPATH
WIDTHS ARE TO BE TEMPORARILY CLOSED, AND FOOTPATH BETWEEN WILMER
STREET AND LI SING STREET (HIGHLIGHTED IN GREY) OF WHICH PARTS OF
THE FOOTPATH WIDTHS ARE TO BE TEMPORARILY CLOSED.

一般說明 GENERAL NOTES

1. 剖面圖所示鐵路設施的形狀和輪廓均屬示意性質。
GEOMETRY AND CONFIGURATION OF RAILWAY FACILITIES
SHOWN IN SECTIONS ARE SCHEMATIC.
2. 所有在劃定方案界線內的道路(包括行車道、行人徑及露天地方)，
無論有否在圖則中顯示，都有可能永久或暫時封閉或大幅改動。
ALL ROADS INCLUDING CARRIAGEWAYS, FOOTPATHS AND OPEN PLACE
WITHIN THE BOUNDARY OF THE SCHEME, WHETHER OR NOT SHOWN
ON THE DRAWINGS MAY BE CLOSED OR ALTERED SUBSTANTIALLY
ON A PERMANENT OR TEMPORARY BASIS.
3. 除非圖則中特別註明，否則在方案界線內，或與方案界線毗鄰
的所有建築物的汽車通道及行人通道，包括逃生路徑，將會保留。
UNLESS NOTED OTHERWISE ON THE DRAWINGS, VEHICULAR AND
PEDESTRIAN ACCESSES (INCLUDING MEANS OF ESCAPE TO AND
FROM ALL BUILDINGS WITHIN OR ADJACENT TO THE BOUNDARY
OF THE SCHEME ARE TO BE MAINTAINED.
4. 所有水平均為約數，以米為單位，並高於香港的主水平基準。
ALL LEVELS ARE APPROXIMATE AND IN METRES ABOVE
HONG KONG PRINCIPAL DATUM (mPD).
5. 圖則顯示的建造方法分界線只是大概位置，有關界線可因應當時
的地盤情況而作出改動。
BOUNDARIES SHOWN ON DRAWINGS FOR THE CONSTRUCTION METHODS
TO BE CARRIED OUT ARE APPROXIMATE ONLY. THESE BOUNDARIES
MAY BE ALTERED ON SITE TO SUIT PREVAILING SITE CONDITIONS.



現有的地鐵上環站
EXISTING MTR SHEUNG WAN STATION

修訂 REV	日期 DATE	繪圖 BY	核對 SUB	負責 APP	說明 DESCRIPTION

SIGNED

簽署發出
APPROVED FOR ISSUE

22/5/2013
發出日期 DATE OF ISSUE

陸耀華 LUK YIU WAH
陸政署
鐵路拓展處工程師(2-1)
CHIEF ENGINEER/
RAILWAY DEVELOPMENT (2-1)
HIGHWAYS DEPARTMENT

圖則名稱 DRAWING TITLE
**鐵路條例(第519章)
地下鐵路(「地鐵」) - 西港島綫**

暫時封閉李陞街、高陞街、修打蘭街及德輔道西路綫
和介乎威利麻街與李陞街的行人徑

RAILWAYS ORDINANCE (CHAPTER 519)
MASS TRANSIT RAILWAY (MTR) - WEST ISLAND LINE

TEMPORARY CLOSURE OF LI SING STREET AND SECTIONS OF KO SHING
STREET, SUTHERLAND STREET, DES VOEUX ROAD WEST, AND FOOTPATH
BETWEEN WILMER STREET AND LI SING STREET

圖號 DRAWING NO. WIL/G06/0007/2

比例 SCALE 1:1000 (A1)
或如顯示
AS SHOWN

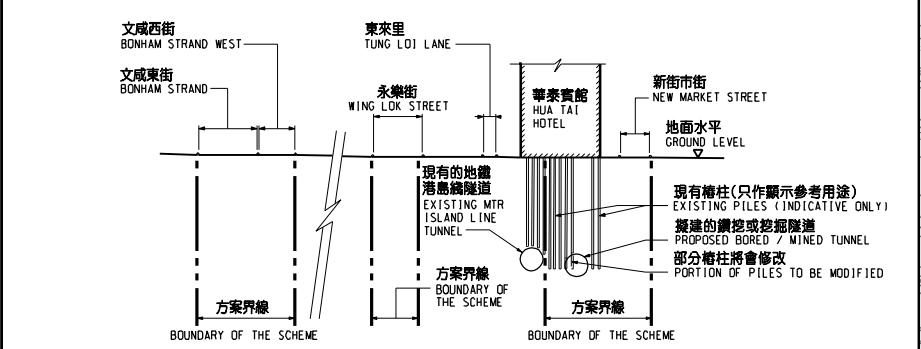
香港特別行政區政府
THE GOVERNMENT OF THE HONG KONG
SPECIAL ADMINISTRATIVE REGION

路政署
HIGHWAYS DEPARTMENT

鐵路拓展處
RAILWAY DEVELOPMENT OFFICE

圖例 LEGEND

	方案界線 BOUNDARY OF THE SCHEME
	擬建的鐵路中綫 PROPOSED RAILWAY TRACK CENTRE LINE
	現有的鐵路中綫 EXISTING RAILWAY TRACK CENTRE LINE
	現有的地鐵車站 EXISTING MTR STATION
	擬建的鑽挖或掘掘隧道 PROPOSED BORED / MINED TUNNEL



剖面圖 SECTION AA
不按比例 NOT TO SCALE

