

說明 NOTES

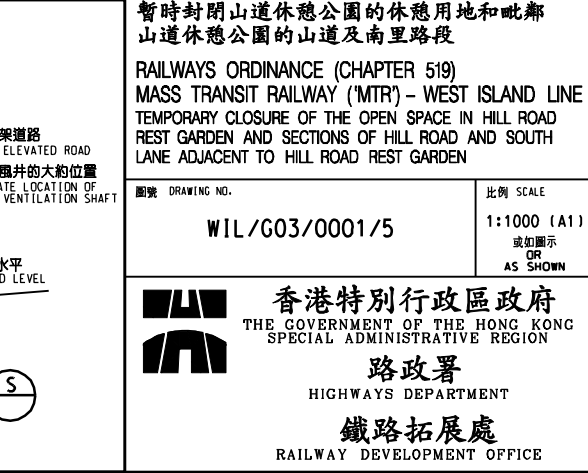
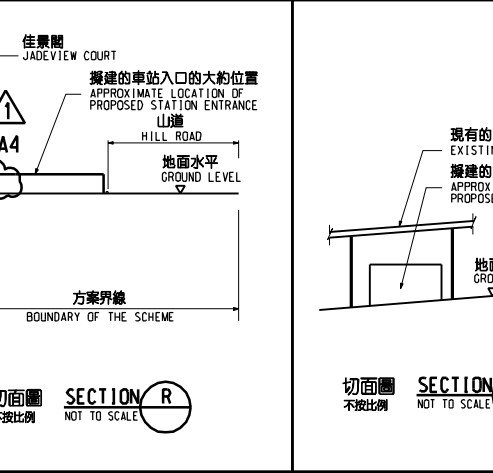
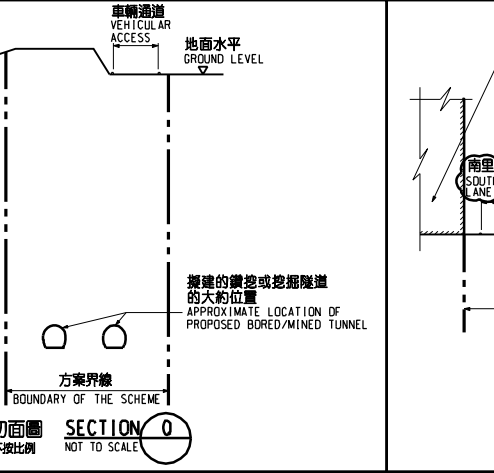
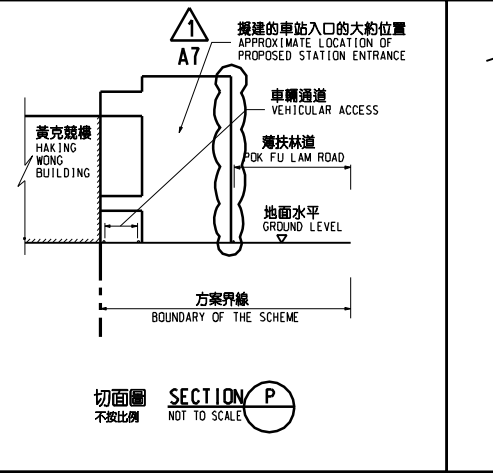
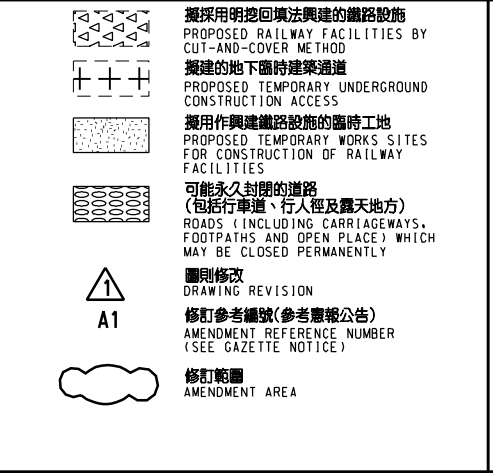
此圖根據第WIL-G03號(修改 1)圖則制訂,以黃色標明將暫時封閉的山道休憩公園的休憩用地,以綠色標明將暫時封閉毗鄰山道休憩公園的山道的樓梯和部分行車道及行人路路面的路面,及以藍色標明將暫時封閉毗鄰山道休憩公園的南里的部分行車道及行人路路面的路面。

THIS DRAWING IS PREPARED BASED ON DRAWING NO. WIL-G03 (REVISION 1) AND IS INTENDED TO SHOW THE OPEN SPACE IN HILL ROAD REST GARDEN (HIGHLIGHTED IN YELLOW) TO BE TEMPORARILY CLOSED, THE SECTION OF HILL ROAD (HIGHLIGHTED IN GREEN) ADJACENT TO HILL ROAD REST GARDEN OF WHICH THE STAIRCASE AND PARTS OF THE CARRIAGEWAY AND FOOTPATH WIDTHS ARE TO BE TEMPORARILY CLOSED, AND THE SECTION OF SOUTH LANE (HIGHLIGHTED IN BLUE) ADJACENT TO HILL ROAD REST GARDEN OF WHICH PARTS OF THE CARRIAGEWAY AND FOOTPATH WIDTHS ARE TO BE TEMPORARILY CLOSED.

1. 切面圖所示鐵路設施的形狀和輪廓均屬示意性質。 GEOMETRY AND CONFIGURATION OF RAILWAY FACILITIES SHOWN IN SECTIONS ARE SCHEMATIC.
2. 所有在劃定方案界線內的道路(包括行車道、行人徑及露天地方),無論有否在圖則中顯示,都有可能永久或暫時封閉或大幅改動。 ALL ROADS INCLUDING CARRIAGEWAYS, FOOTPATHS AND OPEN PLACE WITHIN THE BOUNDARY OF THE SCHEME, WHETHER OR NOT SHOWN ON THE DRAWINGS MAY BE CLOSED OR ALTERED SUBSTANTIALLY ON A PERMANENT OR TEMPORARY BASIS.
3. 除非圖則中特別註明,否則在方案界線內,或與方案界線毗鄰的所有建築物的汽車通道及行人通道,包括逃生路徑,將會保留。 UNLESS NOTED OTHERWISE ON THE DRAWINGS, VEHICULAR AND PEDESTRIAN ACCESSES INCLUDING MEANS OF ESCAPE TO AND FROM ALL BUILDINGS WITHIN OR ADJACENT TO THE BOUNDARY OF THE SCHEME ARE TO BE MAINTAINED.
4. 所有水平均為約數,以米為單位,並高於香港的主水平基準。 ALL LEVELS ARE APPROXIMATE AND IN METRES ABOVE HONG KONG PRINCIPAL DATUM (mPD).
5. 圖則顯示的建造方法分界線只是大概位置,有關界線可因應當時的地盤情況而作出改動。 BOUNDARIES SHOWN ON DRAWINGS FOR THE CONSTRUCTION METHODS TO BE CARRIED OUT ARE APPROXIMATE ONLY. THESE BOUNDARIES MAY BE ALTERED ON SITE TO SUIT PREVAILING SITE CONDITIONS.

圖例 LEGEND

	方案界線 BOUNDARY OF THE SCHEME
	擬建的鐵路軌道 PROPOSED RAILWAY TRACK CENTRE LINE
	擬建的鐵路車站 PROPOSED RAILWAY STATION
	擬建的車站入口/通風大樓/通風井/其他鐵路設施 PROPOSED STATION ENTRANCES/ VENTILATION BUILDINGS/ VENTILATION SHAFTS/ OTHER RAILWAY FACILITIES
	擬建的鐵路設施(地下) PROPOSED RAILWAY FACILITIES (UNDERGROUND)
	擬建的臨時設施(地下) PROPOSED TEMPORARY FACILITIES (UNDERGROUND)
	擬建的鑽挖或掘掘隧道 PROPOSED BORED / MINED TUNNEL
	擬採用鑽挖或掘掘法興建的鐵路設施 PROPOSED RAILWAY FACILITIES BY BORED / MINED METHOD
	擬採用明挖回填法興建的鐵路設施 PROPOSED RAILWAY FACILITIES BY CUT-AND-COVER METHOD
	擬建的地下臨時建築通道 PROPOSED TEMPORARY UNDERGROUND CONSTRUCTION ACCESS
	擬用作興建鐵路設施的臨時工地 PROPOSED TEMPORARY WORKS SITES FOR CONSTRUCTION OF RAILWAY FACILITIES
	可能永久封閉的道路(包括行車道、行人徑及露天地方) ROADS (INCLUDING CARRIAGEWAYS, FOOTPATHS AND OPEN PLACE) WHICH MAY BE CLOSED PERMANENTLY
	圖則修改 DRAWING REVISION
	修訂參考編號(參考憲報公告) AMENDMENT REFERENCE NUMBER (SEE GAZETTE NOTICE)
	修訂範圍 AMENDMENT AREA



修訂表 TABLE OF AMENDMENTS

修訂號	日期	繪圖	類別	性質	說明
REV	DATE	BY	SUB	APP	DESCRIPTION

SIGNED

簽署人
APPROVED FOR ISSUE

26/6/2014

發出日期 DATE OF ISSUE

陸耀華 LUK YU WAH
陸政署
鐵路發展處工程師(2-1)
CHIEF ENGINEER/
RAILWAY DEVELOPMENT (2-1)
HIGHWAYS DEPARTMENT

鐵路條例(第519章)
地下鐵路(「地鐵」) - 西港島綫
暫時封閉山道休憩公園的休憩用地和毗鄰山道休憩公園的山道及南里路段

RAILWAYS ORDINANCE (CHAPTER 519)
MASS TRANSIT RAILWAY (MTR) - WEST ISLAND LINE
TEMPORARY CLOSURE OF THE OPEN SPACE IN HILL ROAD REST GARDEN AND SECTIONS OF HILL ROAD AND SOUTH LANE ADJACENT TO HILL ROAD REST GARDEN

圖號 DRAWING NO.
WIL/G03/0001/5

比例 SCALE
1:1000 (A1)
或如顯示
AS SHOWN

香港特別行政區政府
THE GOVERNMENT OF THE HONG KONG
SPECIAL ADMINISTRATIVE REGION

路政署
HIGHWAYS DEPARTMENT

鐵路發展處
RAILWAY DEVELOPMENT OFFICE