



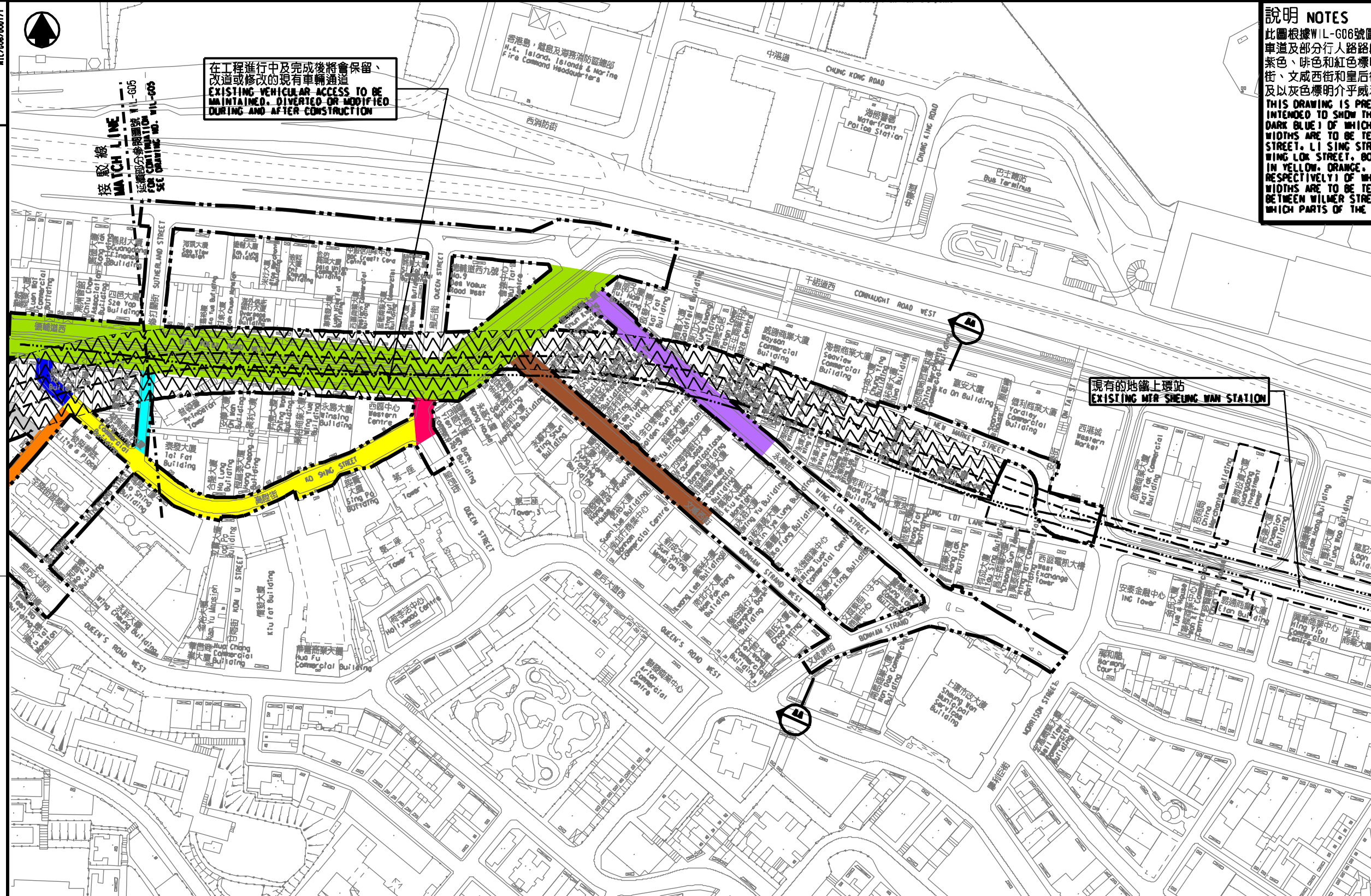
在工程進行中及完成後將會保留、
改造或修改的現有車輛通道
EXISTING VEHICULAR ACCESS TO BE
MAINTAINED, DIVERTED OR MODIFIED
DURING AND AFTER CONSTRUCTION

說明 NOTES

此圖根據WIL-G06號圖則制訂，以深藍色標明高陸街將暫時封閉的
行車道及部分行人路路面的路面，分別以黃色、橙色、淺藍色、綠色、
紫色、啡色和紅色標明高陸街、李陞街、修打蘭街、德輔道西、永樂
街、文咸西街和皇后街將暫時封閉的部分行車道及行人路路面的路面，
以及灰色標明介乎威利麻街與李陞街將暫時封閉的行人路路面的路面。
THIS DRAWING IS PREPARED BASED ON DRAWING NO. WIL-G06 AND IS
INTENDED TO SHOW THE SECTION OF KO SHING STREET (HIGHLIGHTED IN
DARK BLUE) OF WHICH THE CARRIAGEWAYS AND PARTS OF THE FOOTPATH
WIDTHS ARE TO BE TEMPORARILY CLOSED, AND THE SECTIONS OF KO SHING
STREET, LI SING STREET, SUTHERLAND STREET, DES VOEUX ROAD WEST,
WING LOK STREET, BONHAM STRAND WEST AND QUEEN STREET (HIGHLIGHTED
IN YELLOW, ORANGE, LIGHT BLUE, GREEN, PURPLE, BROWN AND RED
RESPECTIVELY) OF WHICH PARTS OF THE CARRIAGEWAY AND FOOTPATH
WIDTHS ARE TO BE TEMPORARILY CLOSED, AND SECTIONS OF A FOOTPATH
BETWEEN WILMER STREET AND LI SING STREET (HIGHLIGHTED IN GREY) OF
WHICH PARTS OF THE FOOTPATH WIDTHS ARE TO BE TEMPORARILY CLOSED.

一般說明 GENERAL NOTES

1. 剖面圖所示鐵路設施的形狀和輪廓均屬示意性質。
GEOMETRY AND CONFIGURATION OF RAILWAY FACILITIES
SHOWN IN SECTIONS ARE SCHEMATIC.
2. 所有在劃定方案界線內的道路(包括行車道、行人徑及露天地方)，
無論有否在圖則中顯示，都有可能永久或暫時封閉或大幅改動。
ALL ROADS (INCLUDING CARRIAGEWAYS, FOOTPATHS AND OPEN PLACE
WITHIN THE BOUNDARY OF THE SCHEME, WHETHER OR NOT SHOWN
ON THE DRAWINGS) MAY BE CLOSED OR ALTERED SUBSTANTIALLY
ON A PERMANENT OR TEMPORARY BASIS.
3. 除非圖則中特別註明，否則在方案界線內，或與方案界線毗鄰
的所有建築物的汽車通道及行人通道，包括逃生路徑，將會保留。
UNLESS NOTED OTHERWISE ON THE DRAWINGS, VEHICULAR AND
PEDESTRIAN ACCESS (INCLUDING MEANS OF ESCAPE TO AND
FROM ALL BUILDINGS WITHIN OR ADJACENT TO THE BOUNDARY
OF THE SCHEME) ARE TO BE MAINTAINED.
4. 所有水平均為約數，以米為單位，並高於香港的主水平基準。
ALL LEVELS ARE APPROXIMATE AND IN METRES ABOVE
HONG KONG PRINCIPAL DATUM (HPD).
5. 圖則顯示的建造方法分界線只是大概位置，有關界線可因應當時
的地盤情況而作出改動。
BOUNDARIES SHOWN ON DRAWINGS FOR THE CONSTRUCTION METHODS
TO BE CARRIED OUT ARE APPROXIMATE ONLY. THESE BOUNDARIES
MAY BE ALTERED ON SITE TO SUIT PREVAILING SITE CONDITIONS.



現有的地鐵上環站
EXISTING MTR SHEUNG WAN STATION

修訂 TABLE OF AMENDMENTS

修訂 REV	日期 DATE	修訂 BY	修訂 SUB	修訂 APP	說明 DESCRIPTION

SIGNED

核准發出
APPROVED FOR ISSUE

1/6/2010

發出日期 DATE OF ISSUE

何錫輝 HO PING HUI
總工程師
CHIEF ENGINEER/
RAILWAY DEVELOPMENT 12-11
HIGHWAYS DEPARTMENT

鐵路條例(第519章)
地下鐵路(「地鐵」) - 西港島綫
暫時封閉部分高陸街、李陞街、修打蘭街、
德輔道西、永樂街、文咸西街、皇后街和
介乎威利麻街與李陞街的行人路
RAILWAYS ORDINANCE (CHAPTER 519)
MASS TRANSIT RAILWAY (MTR) - WEST ISLAND LINE
TEMPORARY CLOSURE OF SECTIONS OF KO SHING STREET,
LI SING STREET, SUTHERLAND STREET, DES VOEUX ROAD WEST,
WING LOK STREET, BONHAM STRAND WEST, QUEEN STREET AND
A FOOTPATH BETWEEN WILMER STREET AND LI SING STREET

圖號 DRAWING NO. WIL/G06/0007/1

比例 SCALE 1:1000 (A1)

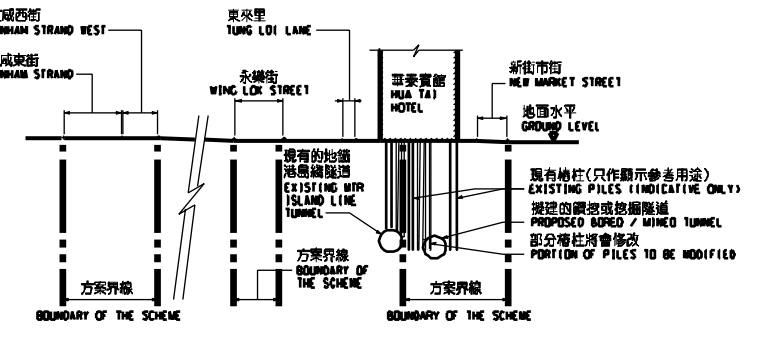
香港特別行政區政府
THE GOVERNMENT OF THE HONG KONG
SPECIAL ADMINISTRATIVE REGION

路政署
HIGHWAYS DEPARTMENT

鐵路拓展處
RAILWAY DEVELOPMENT OFFICE

圖例 LEGEND

- 方案界線
BOUNDARY OF THE SCHEME
- 擬建的鐵路中線
PROPOSED RAILWAY TRACK
CENTRE LINE
- 現有的鐵路中線
EXISTING RAILWAY TRACK
CENTRE LINE
- 現有的地鐵車站
EXISTING MTR STATION
- 擬建的鑽挖或掘埋隧道
PROPOSED BORED / MINED TUNNEL



剖面圖 SECTION AA
不假比例 NOT TO SCALE