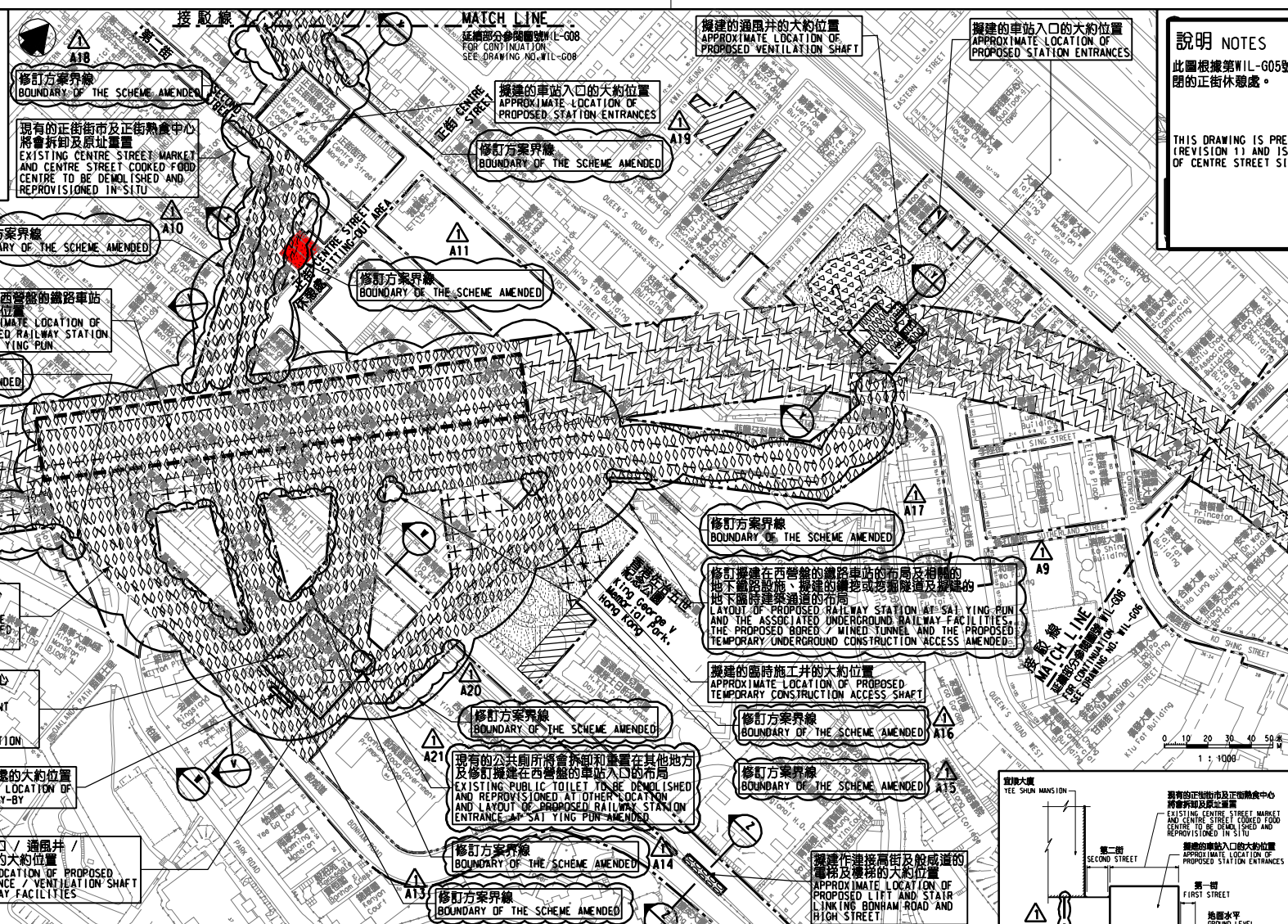
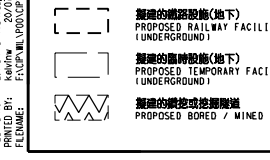
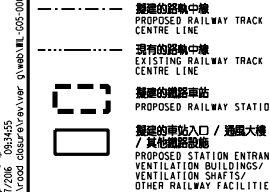
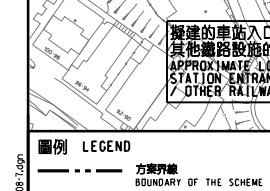
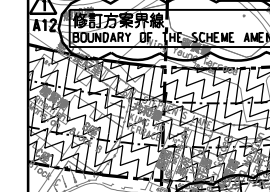
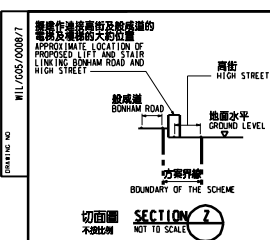
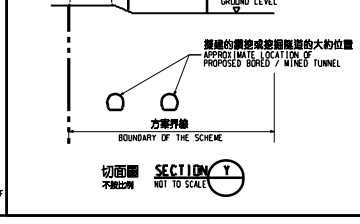
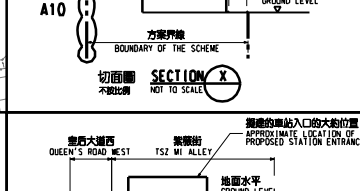
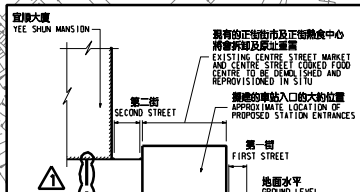
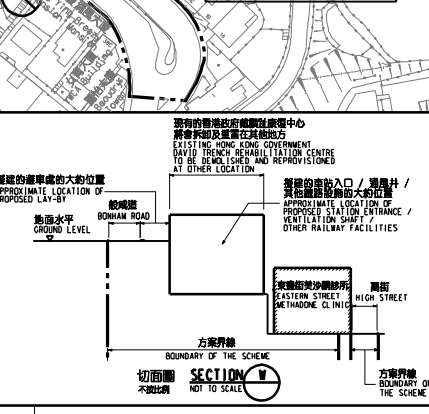
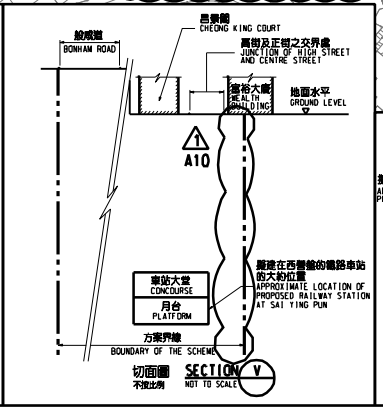


WIL/G05/0008/7



**圖例 LEGEND**

	方案界線 BOUNDARY OF THE SCHEME		擬採用鑽挖或挖填法興建的鐵路設施 PROPOSED RAILWAY FACILITIES BY BORED / MINED METHOD
	擬建的鐵路中線 PROPOSED RAILWAY TRACK CENTRE LINE		擬採用抽印填法興建的鐵路設施 PROPOSED RAILWAY FACILITIES BY CUT-AND-COVER METHOD
	現有的鐵路中線 EXISTING RAILWAY TRACK CENTRE LINE		擬建的地下臨時建築通道 PROPOSED TEMPORARY UNDERGROUND CONSTRUCTION ACCESS
	擬建的鐵路車站 PROPOSED RAILWAY STATION		擬用作興建鐵路設施的臨時施工地點 PROPOSED TEMPORARY WORKS SITES FOR CONSTRUCTION OF RAILWAY FACILITIES
	擬建的車站入口 / 通風井 / 其他鐵路設施 PROPOSED STATION ENTRANCES / VENTILATION BUILDINGS / OTHER RAILWAY FACILITIES		可能永久封閉的道路 (包括行車道、行人徑及露天地方) / 其他鐵路設施 ROADS (INCLUDING CARRIAGEWAYS, FOOTPATHS AND OPEN PLACE) WHICH MAY BE CLOSED PERMANENTLY / OTHER RAILWAY FACILITIES
	擬建的鐵路設施(地下) PROPOSED RAILWAY FACILITIES (UNDERGROUND)		擬設置地盤設施的臨時施工地點 PROPOSED TEMPORARY WORKS AREA FOR SITE FACILITIES
	擬建的臨時設施(地下) PROPOSED TEMPORARY FACILITIES (UNDERGROUND)		圖則修改 DRAWING REVISION
	擬建的鑽挖或挖填隧道 PROPOSED BORED / MINED TUNNEL		修訂參考編號(參看審閱公告) AMENDMENT REFERENCE NUMBER (SEE GAZETTE NOTICE)
			修訂範圍 AMENDMENT AREA



**說明 NOTES**

此圖根據第WIL-G05號(修改 1)圖則制訂, 以紅色標明將暫時封閉的正街休憩處。

THIS DRAWING IS PREPARED BASED ON DRAWING NO. WIL-G05 REVISION 1 AND IS INTENDED TO SHOW THE TEMPORARY CLOSURE OF CENTRE STREET SITTING-OUT AREA (HIGHLIGHTED IN RED).

- 一般說明 GENERAL NOTES**
1. 切面圖所示鐵路設施的形狀和範圍均屬示意性質。GEOMETRY AND CONFIGURATION OF RAILWAY FACILITIES SHOWN IN SECTIONS ARE SCHEMATIC.
  2. 所有在擬定方案界線內的道路(包括行車道、行人徑及露天地方), 無論有否在圖中顯示, 都有可能永久或暫時封閉或大幅改動。ALL ROADS INCLUDING CARRIAGEWAYS, FOOTPATHS AND OPEN PLACE WITHIN THE BOUNDARY OF THE SCHEME, WHETHER OR NOT SHOWN ON THE DRAWINGS MAY BE CLOSED OR ALTERED SUBSTANTIALLY ON A PERMANENT OR TEMPORARY BASIS.
  3. 修訂圖則中特別註明, 否則在方案界線內, 或與方案界線毗鄰, 所有可能存在的汽車通道及行人通道, 包括逃生通道, 將會保留。UNLESS NOTED OTHERWISE ON THE DRAWINGS, VEHICULAR AND PEDESTRIAN ACCESSES INCLUDING MEANS OF ESCAPE TO AND FROM ALL BUILDINGS WITHIN OR ADJACENT TO THE BOUNDARY OF THE SCHEME ARE TO BE MAINTAINED.
  4. 所有水平均為約數, 以米為單位, 並基於香港的主水平基準。ALL LEVELS ARE APPROXIMATE AND IN METRES ABOVE HONG KONG PRINCIPAL DATUM (HPD).
  5. 圖則顯示的建造方法界線只是大概位置, 有關界線可因應地質的變異而作修改。BOUNDARIES SHOWN ON DRAWINGS FOR THE CONSTRUCTION METHODS TO BE CARRIED OUT ARE APPROXIMATE ONLY. THESE BOUNDARIES MAY BE ALTERED ON SITE TO SUIT PREVAILING SITE CONDITIONS.

**修訂 TABLE OF AMENDMENTS**

修訂 NO.	日期 DATE	由 BY	供 FOR	用途 PURPOSE	說明 DESCRIPTION

**SIGNED**

批准人 APPROVED FOR ISSUE: 陸嘉輝 LUK YIU WAN  
 總工程師/特別職務 CHIEF ENGINEER SPECIAL DUTIES  
 日期 DATE OF ISSUE: 20/7/2016  
 部門 DEPARTMENT: 路政署 HIGHWAYS DEPARTMENT

圖則名稱 DRAWING TITLE: 鐵路條例(第519章) 地下鐵路(「地鐵」) - 西港島綫 暫時封閉正街休憩處  
 RAILWAYS ORDINANCE (CHAPTER 519) MASS TRANSIT RAILWAY (MTR) - WEST ISLAND LINE TEMPORARY CLOSURE OF CENTRE STREET SITTING-OUT AREA

圖號 DRAWING NO.: WIL/G05/0008/7  
 比例 SCALE: 1:11000 (A1)  
 圖則顯示 AS SHOWN  
 香港特別行政區政府 THE GOVERNMENT OF THE HONG KONG SPECIAL ADMINISTRATIVE REGION  
 路政署 HIGHWAYS DEPARTMENT  
 鐵路拓展處 RAILWAY DEVELOPMENT OFFICE

PLOT BY: END/PC/VA/VS/PR/PC/PC/CH  
PRINTED BY: 20/07/2016 09:34:55  
FILE NAME: F:\CP\MTR\_VPO\DP\road\_obsrvr\viewer\G05-WIL-G05-0008-7.dgn