

**說明 NOTES**

此圖根據第WIL-G05號(修改 1)圖則制訂, 以紅色標明將暫時封閉的正街休憩處。

THIS DRAWING IS PREPARED BASED ON DRAWING NO. WIL-G05 REVISION 1 AND IS INTENDED TO SHOW THE TEMPORARY CLOSURE OF CENTRE STREET SITTING-OUT AREA (HIGHLIGHTED IN RED).

- 一般說明 GENERAL NOTES**
1. 切面圖所示鐵路設施的形狀和範圍均屬示意性質。GEOMETRY AND CONFIGURATION OF RAILWAY FACILITIES SHOWN IN SECTIONS ARE SCHEMATIC.
  2. 所有在擬定方案界線內的道路(包括行車道、行人徑及露天地方), 無論有否在圖中顯示, 均有可能永久或暫時封閉或大幅改動。ALL ROADS INCLUDING CARRIAGEWAYS, FOOTPATHS AND OPEN PLACE WITHIN THE BOUNDARY OF THE SCHEME, WHETHER OR NOT SHOWN ON THE DRAWINGS MAY BE CLOSED OR ALTERED SUBSTANTIALLY ON A PERMANENT OR TEMPORARY BASIS.
  3. 除圖則中特別註明, 否則在方案界線內, 或與方案界線毗鄰, 所有建築物均須預留逃生通道及行人通道, 包括逃生梯, 將會保留。UNLESS NOTED OTHERWISE ON THE DRAWINGS, VEHICULAR AND PEDESTRIAN ACCESSES INCLUDING MEANS OF ESCAPE TO AND FROM ALL BUILDINGS WITHIN OR ADJACENT TO THE BOUNDARY OF THE SCHEME ARE TO BE MAINTAINED.
  4. 所有水平均為約數, 以米為單位, 並基於香港的主水平基準。ALL LEVELS ARE APPROXIMATE AND IN METRES ABOVE HONG KONG PRINCIPAL DATUM (HPD).
  5. 圖則顯示的建造方法界線只是大概位置, 有關界線可因應地質的變異而作修改。BOUNDARIES SHOWN ON DRAWINGS FOR THE CONSTRUCTION METHODS TO BE CARRIED OUT ARE APPROXIMATE ONLY. THESE BOUNDARIES MAY BE ALTERED ON SITE TO SUIT PREVAILING SITE CONDITIONS.

在工程進行中及完成後將會保留、改道或修改的現有車輛通道。EXISTING VEHICULAR ACCESS TO BE MAINTAINED, DIVERTED OR MODIFIED DURING AND AFTER CONSTRUCTION.

現有的香港政府康樂中心將會拆卸及重置在其他地方。EXISTING HONG KONG GOVERNMENT DAVID TRENCH REHABILITATION CENTRE TO BE DEMOLISHED AND REPROVISIONED AT OTHER LOCATION.

擬建的避車處的大約位置。APPROXIMATE LOCATION OF PROPOSED LAY-BY.

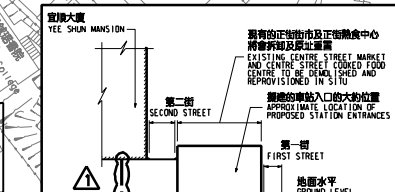
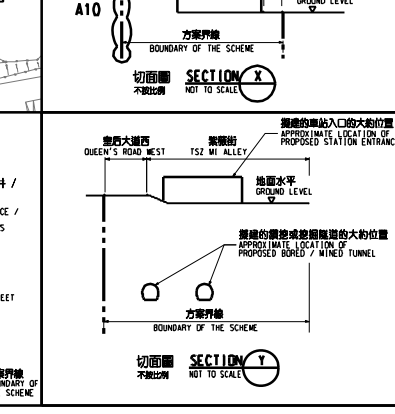
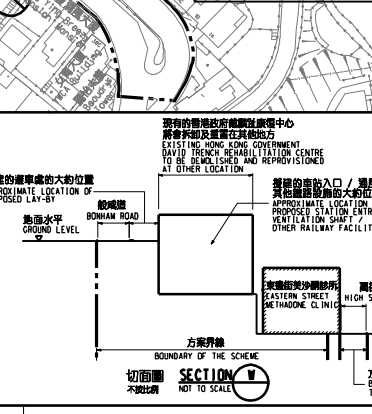
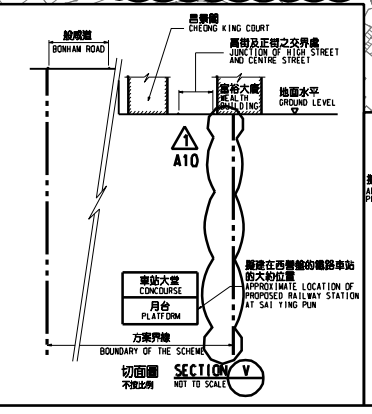
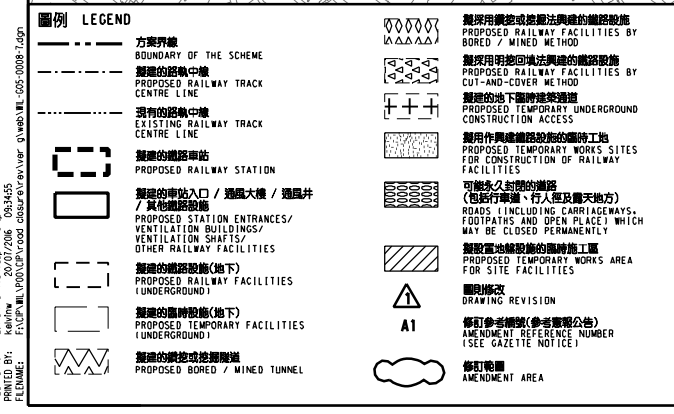
擬建的車站入口、通風井 / 其他鐵路設施的大約位置。APPROXIMATE LOCATION OF PROPOSED STATION ENTRANCE / VENTILATION SHAFT / OTHER RAILWAY FACILITIES.

擬建的鐵路車站的大約位置。APPROXIMATE LOCATION OF PROPOSED RAILWAY STATION AT SAI YING PUN.

擬建的車站入口、通風井 / 其他鐵路設施的大約位置。APPROXIMATE LOCATION OF PROPOSED STATION ENTRANCE / VENTILATION SHAFT / OTHER RAILWAY FACILITIES.

擬建的車站入口、通風井 / 其他鐵路設施的大約位置。APPROXIMATE LOCATION OF PROPOSED STATION ENTRANCE / VENTILATION SHAFT / OTHER RAILWAY FACILITIES.

擬建的車站入口、通風井 / 其他鐵路設施的大約位置。APPROXIMATE LOCATION OF PROPOSED STATION ENTRANCE / VENTILATION SHAFT / OTHER RAILWAY FACILITIES.



**修訂 TABLE OF AMENDMENTS**

修訂 NO.	日期 DATE	由 BY	核對 CHECKED	批准 APPROVED	說明 DESCRIPTION

**SIGNED**

批准日期 DATE OF ISSUE: 20/7/2016

批准人 APPROVED FOR ISSUE: 陸嘉華 LUK YIU WAN

總工程師/特別職務 CHIEF ENGINEER SPECIAL DUTIES: 陸嘉華 LUK YIU WAN

日期 DATE OF ISSUE: 20/7/2016

圖則名稱 DRAWING TITLE: 鐵路條例(第519章) 地下鐵路(「地鐵」) - 西港島綫 暫時封閉正街休憩處

RAILWAYS ORDINANCE (CHAPTER 519) MASS TRANSIT RAILWAY (MTR) - WEST ISLAND LINE TEMPORARY CLOSURE OF CENTRE STREET SITTING-OUT AREA

圖號 DRAWING NO.: WIL/G05/0008/7

比例 SCALE: 1:11000 (A1)

香港特別行政區政府 THE GOVERNMENT OF THE HONG KONG SPECIAL ADMINISTRATIVE REGION

路政署 HIGHWAYS DEPARTMENT

鐵路拓展處 RAILWAY DEVELOPMENT OFFICE