

WIL/G06/0006/1  
DRAWING NO.  
E:\lib\p1\18\vb\p1\inter.plt  
ke\m\w 11/03/2010 16:32:32  
f:\cib\w\p00\cib\ood obsure\wil-g06-0006-1.dgn  
PLOT DRW:  
PRINTED BY:  
FILENAME:

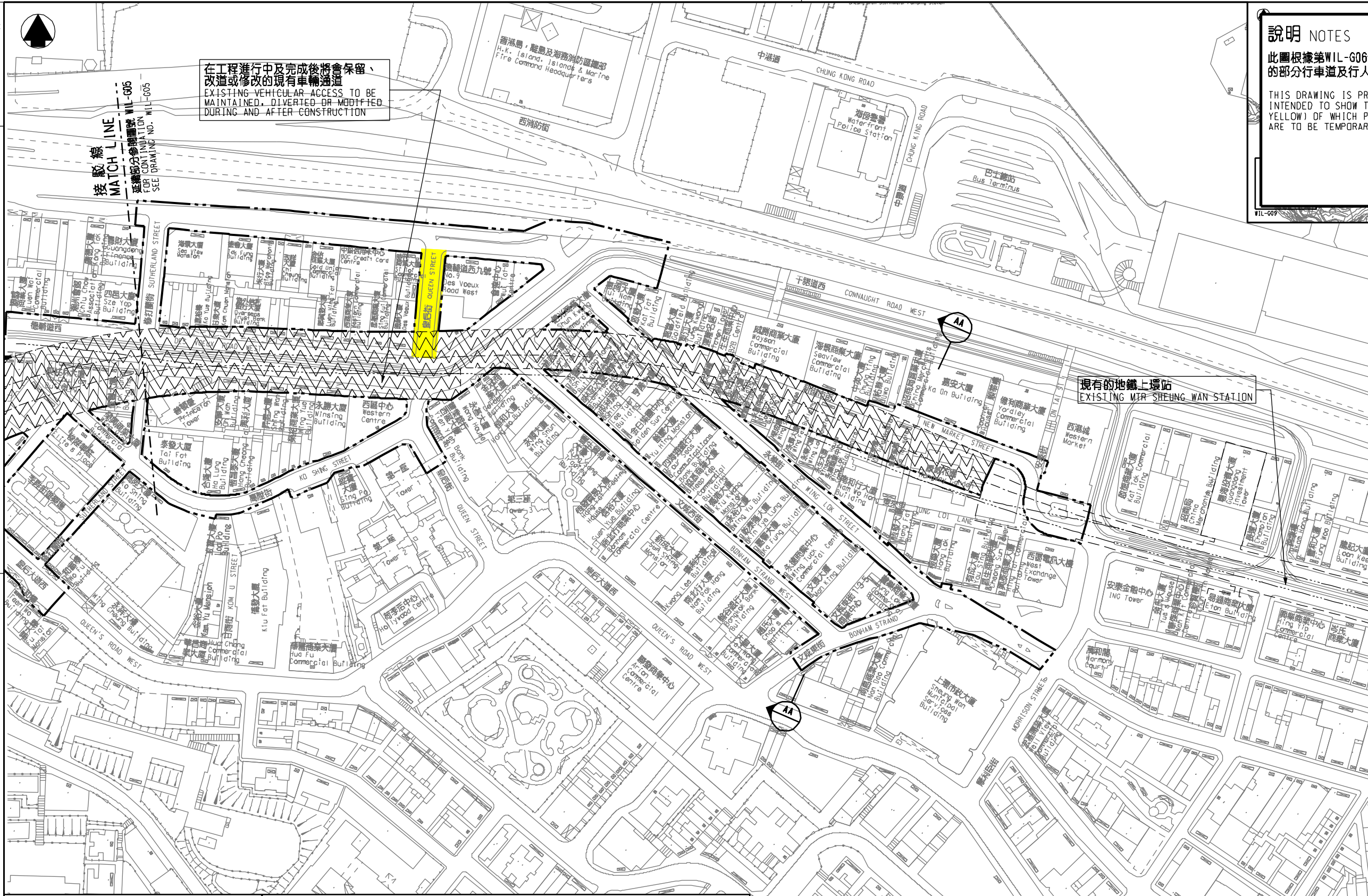


在工程進行中及完成後將會保留、  
改造或修改的現有車輛通道  
EXISTING VEHICULAR ACCESS TO BE  
MAINTAINED, DIVERTED OR MODIFIED  
DURING AND AFTER CONSTRUCTION

接駁線  
MATCH LINE  
延續部分參閱圖號 WIL-G05  
FOR CONTINUATION  
SEE DRAWING NO. WIL-G05

**說明 NOTES**  
此圖根據第WIL-G06號圖則制訂，以黃色標明皇后街將暫時封閉  
的部分行車道及行人路路段的路面。  
THIS DRAWING IS PREPARED BASED ON DRAWING NO. WIL-G06 AND IS  
INTENDED TO SHOW THE SECTIONS OF QUEEN STREET (HIGHLIGHTED IN  
YELLOW) OF WHICH PARTS OF THE CARRIAGEWAY AND FOOTPATH WIDTHS  
ARE TO BE TEMPORARILY CLOSED.

- 一般說明 GENERAL NOTES**
1. 剖面圖所示鐵路設施的形狀和輪廓均屬示意性質。  
GOMETRY AND CONFIGURATION OF RAILWAY FACILITIES  
SHOWN IN SECTIONS ARE SCHEMATIC.
  2. 所有在劃定方案界線內的道路(包括行車道、行人徑及露天地方)，  
無論有否在圖則中顯示，都有可能永久或暫時封閉或大幅改動。  
ALL ROADS INCLUDING CARRIAGEWAYS, FOOTPATHS AND OPEN PLACE  
WITHIN THE BOUNDARY OF THE SCHEME, WHETHER OR NOT SHOWN  
ON THE DRAWINGS MAY BE CLOSED OR ALTERED SUBSTANTIALLY  
ON A PERMANENT OR TEMPORARY BASIS.
  3. 除非圖則中特別註明，否則在方案界線內，或與方案界線毗鄰  
的所有建築物的汽車通道及行人通道，包括逃生路徑，將會保留。  
UNLESS NOTED OTHERWISE ON THE DRAWINGS, VEHICULAR AND  
PEDESTRIAN ACCESSES INCLUDING MEANS OF ESCAPE TO AND  
FROM ALL BUILDINGS WITHIN OR ADJACENT TO THE BOUNDARY  
OF THE SCHEME ARE TO BE MAINTAINED.
  4. 所有水平均為約數，以米為單位，並高於香港的主水平基準。  
ALL LEVELS ARE APPROXIMATE AND IN METRES ABOVE  
HONG KONG PRINCIPAL DATUM (MPD).
  5. 圖則顯示的建造方法分界線只是大體位置，有關界線可因應當時  
的地盤情況而作出改動。  
BOUNDARIES SHOWN ON DRAWINGS FOR THE CONSTRUCTION METHODS  
TO BE CARRIED OUT ARE APPROXIMATE ONLY. THESE BOUNDARIES  
MAY BE ALTERED ON SITE TO SUIT PREVAILING SITE CONDITIONS.



現有的地鐵上環站  
EXISTING MTR SHEUNG WAN STATION

修訂表  
TABLE OF AMENDMENTS

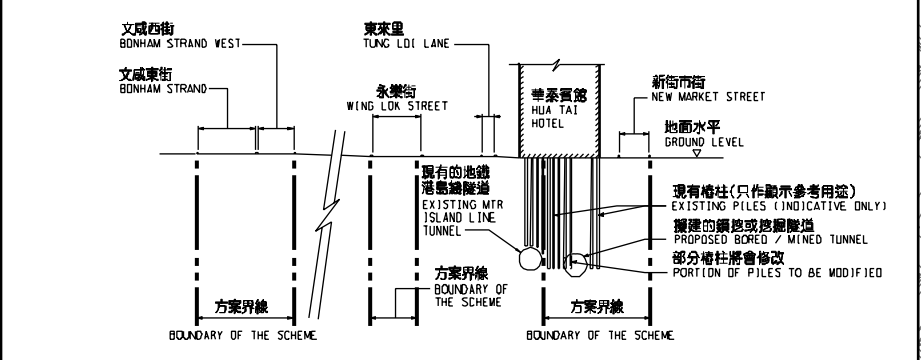
修訂 REV	日期 DATE	修訂 BY	修訂 SUB	用途 APP	說明 DESCRIPTION

**SIGNED**  
何曉龍 HO PING KLEN  
路政署  
鐵路拓展處總工程師 (2-1)  
CHIEF ENGINEER/  
RAILWAY DEVELOPMENT (2-1)  
HIGHWAYS DEPARTMENT  
11/3/2010  
發出日期 DATE OF ISSUE

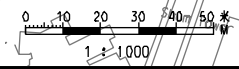
圖則名稱 DRAWING TITLE  
**鐵路條例(第519章)  
地下鐵路(「地鐵」) - 西港島線  
暫時封閉部分皇后街**  
RAILWAYS ORDINANCE (CHAPTER 519)  
MASS TRANSIT RAILWAY (MTR) - WEST ISLAND LINE  
TEMPORARY CLOSURE OF SECTIONS  
OF QUEEN STREET

圖號 DRAWING NO.  
**WIL/G06/0006/1**  
比例 SCALE  
1:1000 (A1)  
或如顯示  
OR  
AS SHOWN

- 圖例 LEGEND**
- 方案界線  
BOUNDARY OF THE SCHEME
  - 擬建的鐵路中線  
PROPOSED RAILWAY TRACK  
CENTRE LINE
  - 現有的鐵路中線  
EXISTING RAILWAY TRACK  
CENTRE LINE
  - 現有的地鐵車站  
EXISTING MTR STATION
  - 擬建的鑽挖或掘地隧道  
PROPOSED BORED / MINED TUNNEL



剖面圖 SECTION AA  
不按比例 NOT TO SCALE



**香港特別行政區政府**  
THE GOVERNMENT OF THE HONG KONG  
SPECIAL ADMINISTRATIVE REGION  
**路政署**  
HIGHWAYS DEPARTMENT  
**鐵路拓展處**  
RAILWAY DEVELOPMENT OFFICE