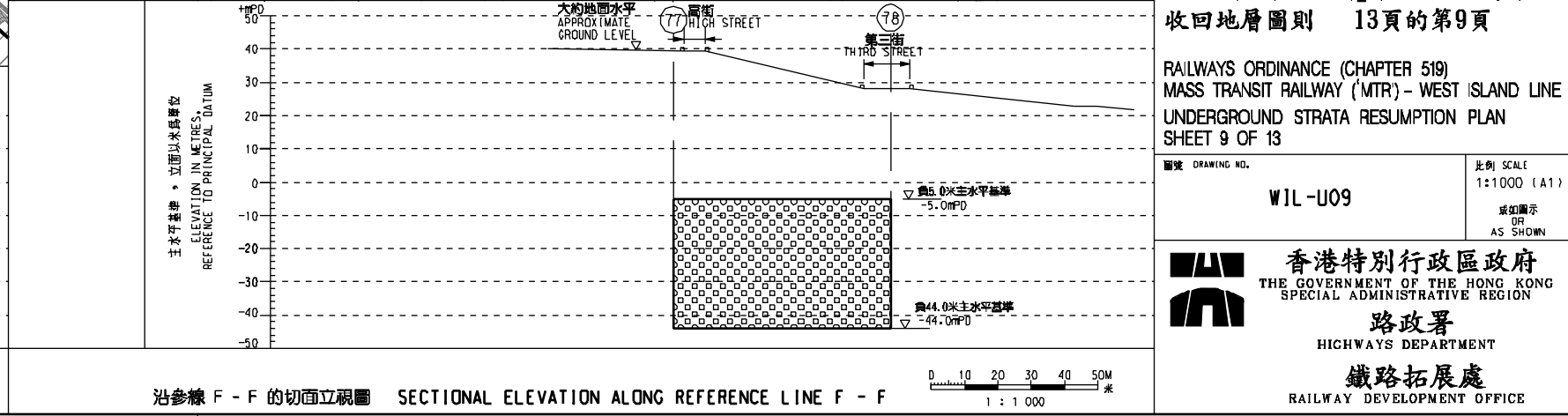
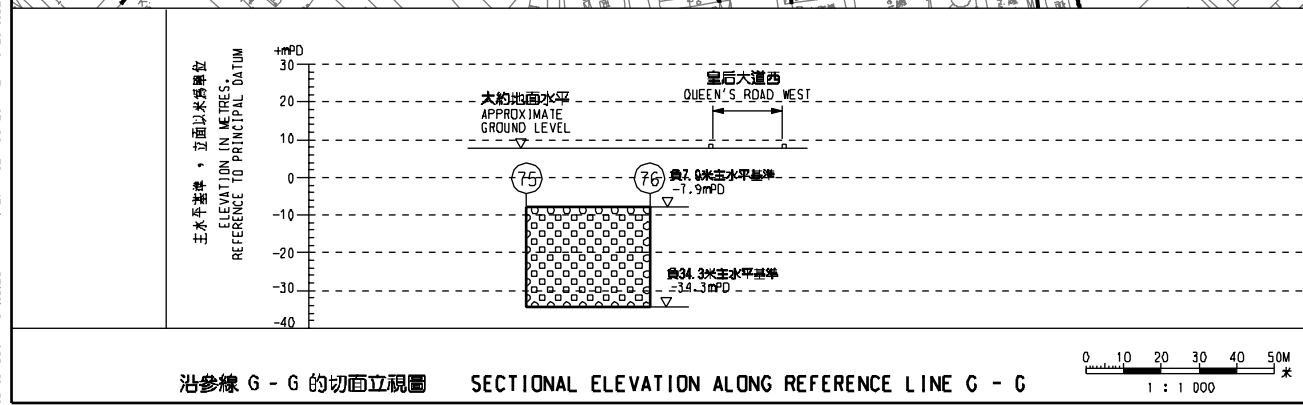
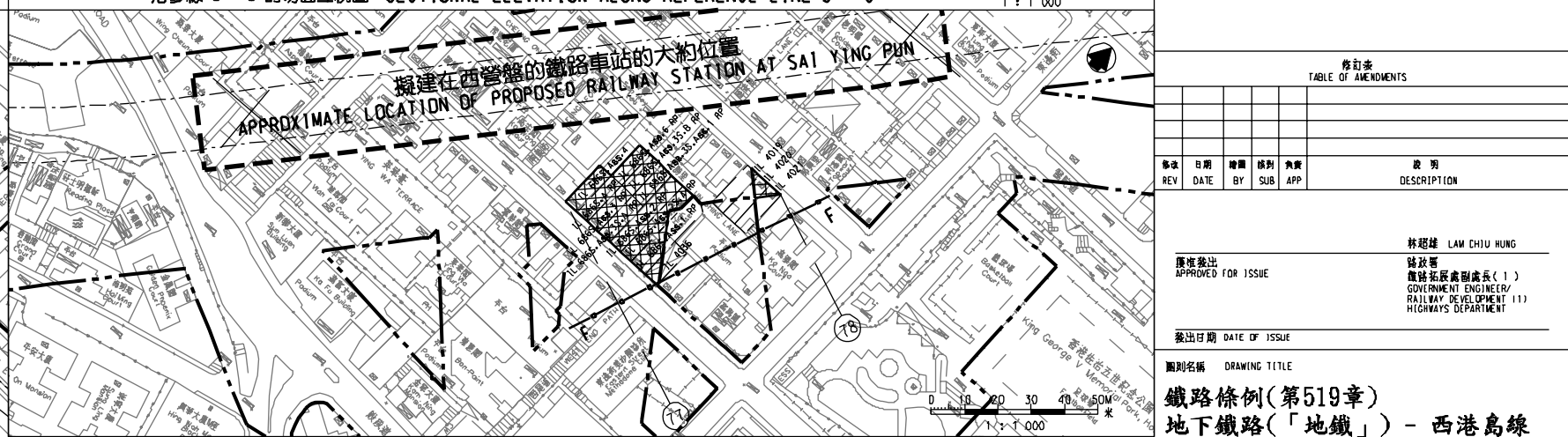
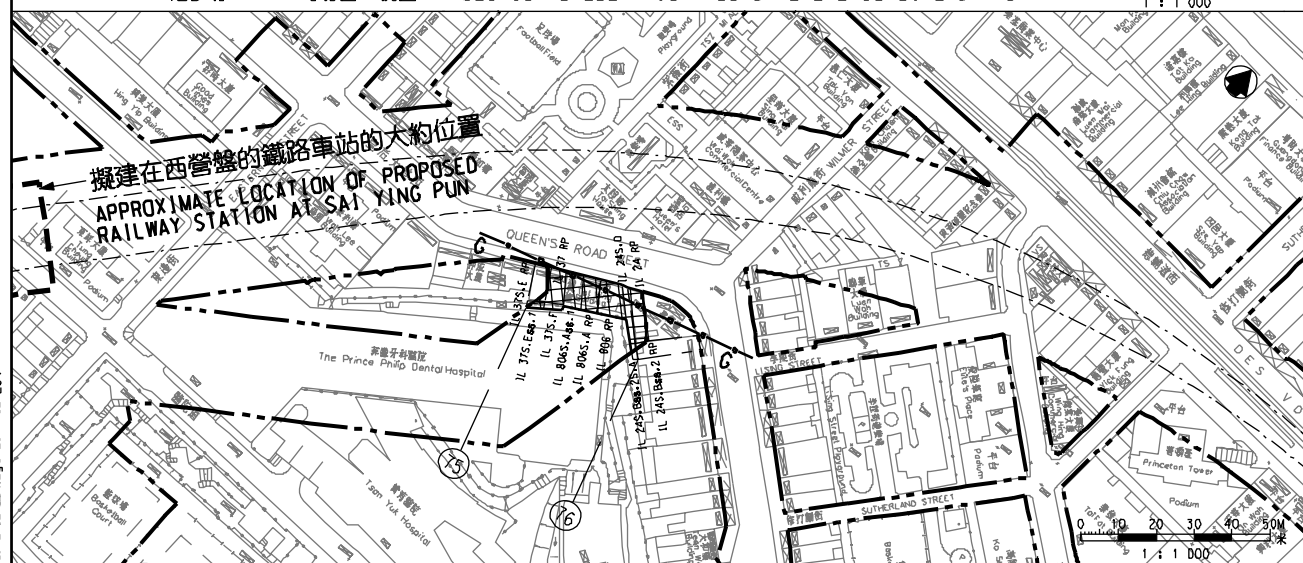
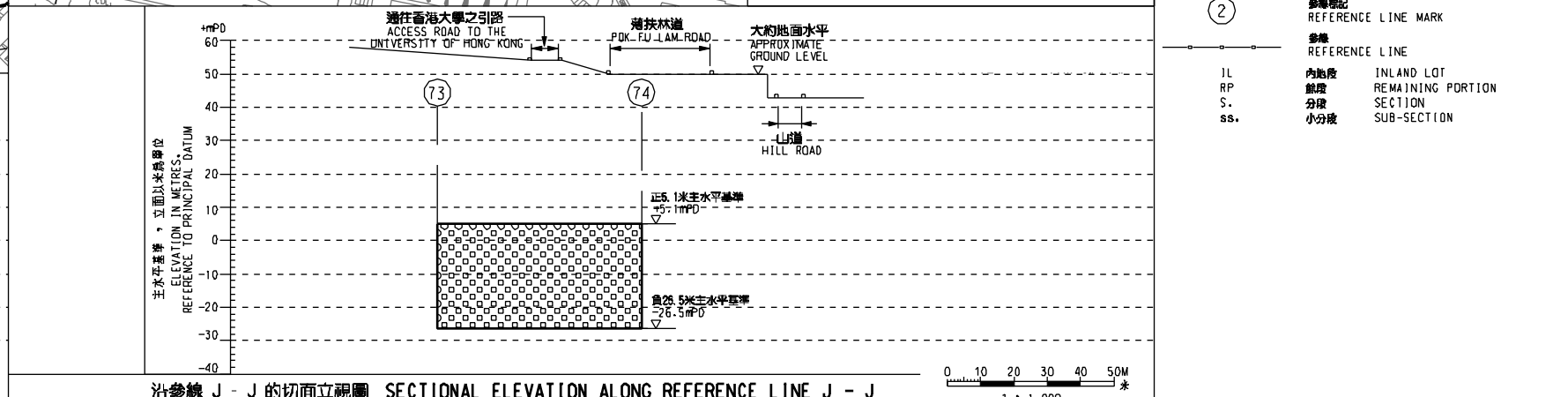
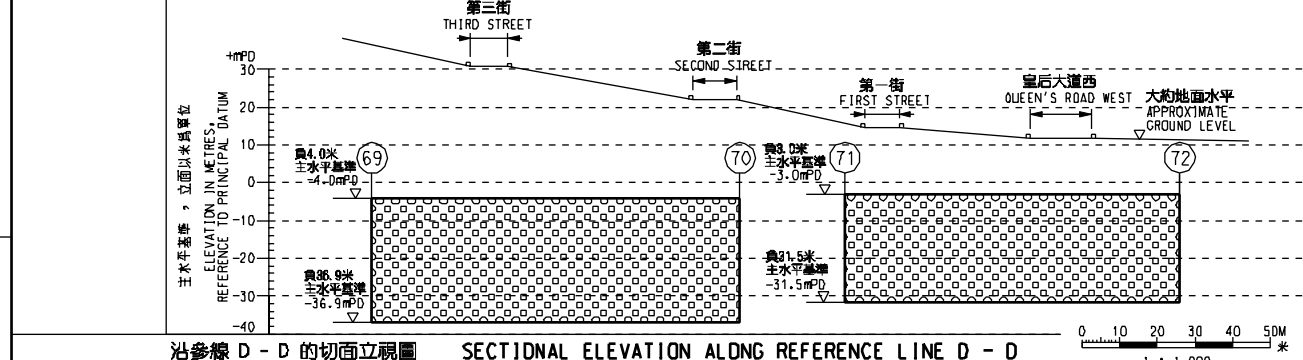


- 一般說明 GENERAL NOTES
1. 收回地層的細節在圖則第WIL-U10至WIL-U13號顯示。
DETAILS OF UNDERGROUND STRATA RESUMPTION ARE SHOWN IN DRAWING NOS. WIL-U10 TO WIL-U13.
 2. 本圖則與圖則第WIL-U03及WIL-U05號立閱。
THIS DRAWING SHALL BE READ IN CONJUNCTION WITH DRAWING NOS. WIL-U03 & WIL-U05.
 3. 收回的土地在圖則第WIL-L01號顯示。
DETAILS OF LAND RESUMPTION ARE SHOWN IN DRAWING NO. WIL-L01.
 4. 收回的土地在圖則第WIL-L02號顯示。
DETAILS OF LAND RESUMPTION ARE SHOWN IN DRAWING NO. WIL-L02.
 5. 沿參線的切面立視圖顯示的正/負主水平基準均為約數。
THE +/- MPD'S SHOWN IN THE SECTIONAL ELEVATION ALONG REFERENCE LINE ARE APPROXIMATE.

圖例 LEGEND

	方案界線 BOUNDARY OF THE SCHEME
	可被收回地層的土地 LAND UNDER WHICH UNDERGROUND STRATA MAY BE RESUMED
	可被收回的地層 UNDERGROUND STRATA WHICH MAY BE RESUMED
	擬建的鐵路車站 PROPOSED RAILWAY STATION
	擬建的鐵路中線 PROPOSED RAILWAY TRACK CENTRE LINE
	地層界線 LOT BOUNDARY
	參線標記 REFERENCE LINE MARK
	參線 REFERENCE LINE
IL	內地段 INLAND LOT
RP	餘地 REMAINING PORTION
S.	分段 SECTION
ss.	小分段 SUB-SECTION



修訂表
TABLE OF AMENDMENTS

修訂 REV	日期 DATE	修訂 BY	類別 SUB	負責 APP	說明 DESCRIPTION

原圖發出
APPROVED FOR ISSUE

發出日期
DATE OF ISSUE

圖則名稱
DRAWING TITLE

鐵路條例(第519章)
地下鐵路(「地鐵」) - 西港島綫
收回地層圖則 13頁的第9頁

RAILWAYS ORDINANCE (CHAPTER 519)
MASS TRANSIT RAILWAY (MTR) - WEST ISLAND LINE
UNDERGROUND STRATA RESUMPTION PLAN
SHEET 9 OF 13

圖號 DRAWING NO. WIL-U09

比例 SCALE 1:1000 (A1)

或如圖示
AS SHOWN

香港特別行政區政府
THE GOVERNMENT OF THE HONG KONG
SPECIAL ADMINISTRATIVE REGION

路政署
HIGHWAYS DEPARTMENT

鐵路拓展處
RAILWAY DEVELOPMENT OFFICE