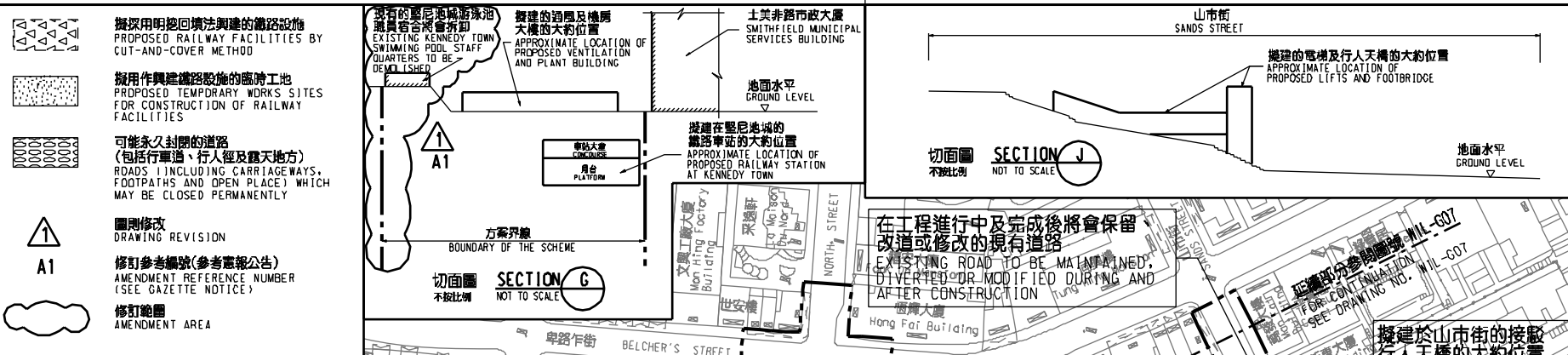


WIL/G02/0003/1

圖例 LEGEND

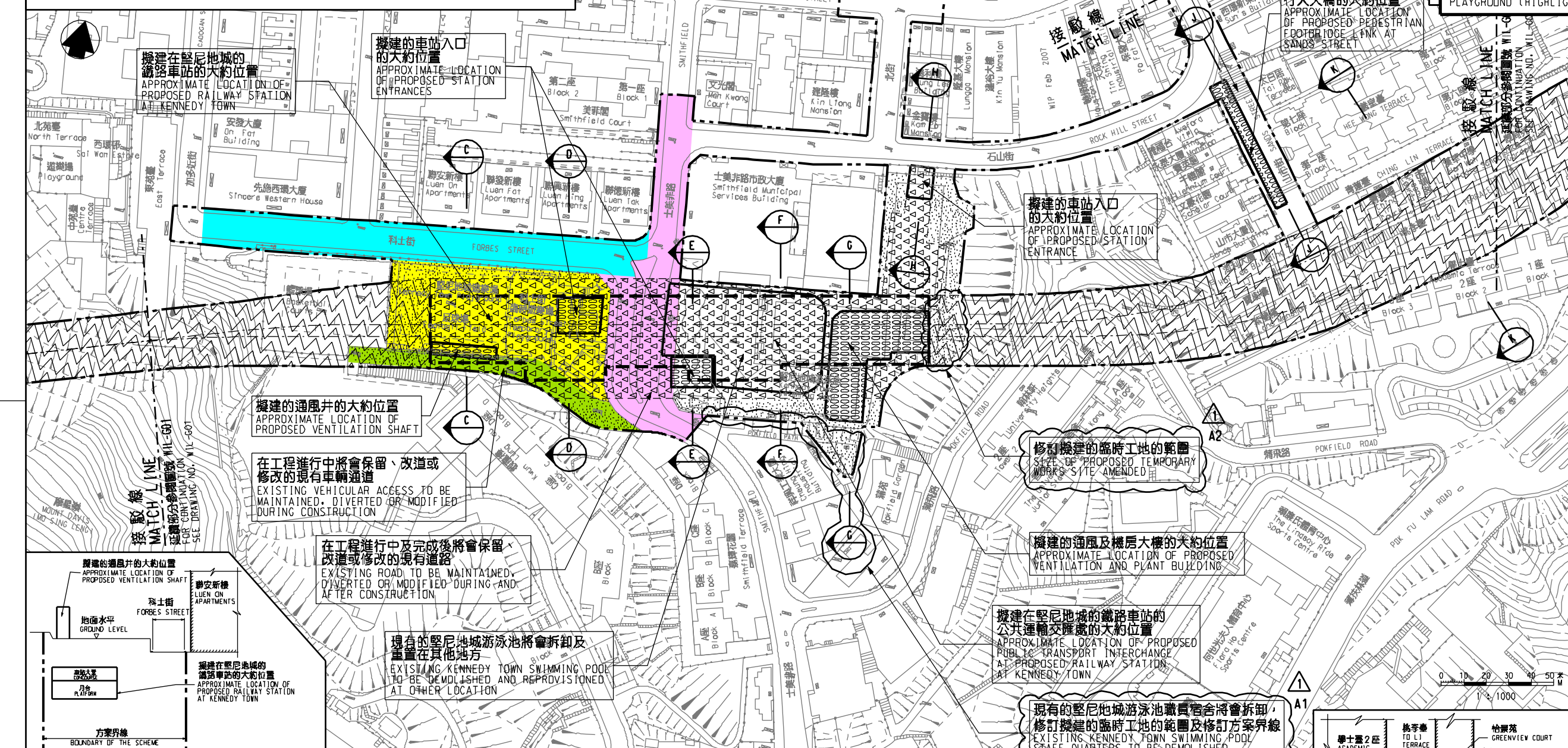
- 方案界線
BOUNDARY OF THE SCHEME
- 擬建的軌道中線
PROPOSED RAILWAY TRACK CENTRE LINE
- 擬建的鐵路車站
PROPOSED RAILWAY STATION
- 擬建的車站入口 / 通風大樓 / 通風井 / 其他鐵路設施
PROPOSED STATION ENTRANCES / VENTILATION BUILDINGS / VENTILATION SHAFTS / OTHER RAILWAY FACILITIES
- 擬建的鐵路設施(地下)
PROPOSED RAILWAY FACILITIES (UNDERGROUND)
- 擬建的鑽挖或挖洞隧道
PROPOSED BORED / MINED TUNNEL
- 擬採用明挖回填法興建的鐵路設施
PROPOSED RAILWAY FACILITIES BY CUT-AND-COVER METHOD
- 擬用作興建鐵路設施的臨時工地
PROPOSED TEMPORARY WORKS SITES FOR CONSTRUCTION OF RAILWAY FACILITIES
- 可能永久封閉的道路(包括行車道、行人徑及露天地方) / 其他鐵路設施
ROADS (INCLUDING CARRIAGEWAYS, FOOTPATHS AND OPEN PLACE) WHICH MAY BE CLOSED PERMANENTLY
- 圖則修改
DRAWING REVISION
- 修訂參考編號(參考憲報公告)
AMENDMENT REFERENCE NUMBER (SEE GAZETTE NOTICE)
- 修訂範圍
AMENDMENT AREA



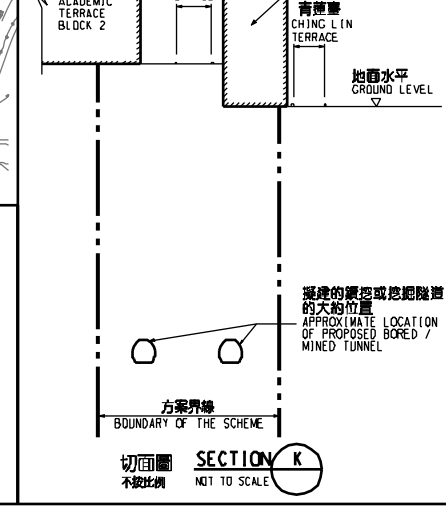
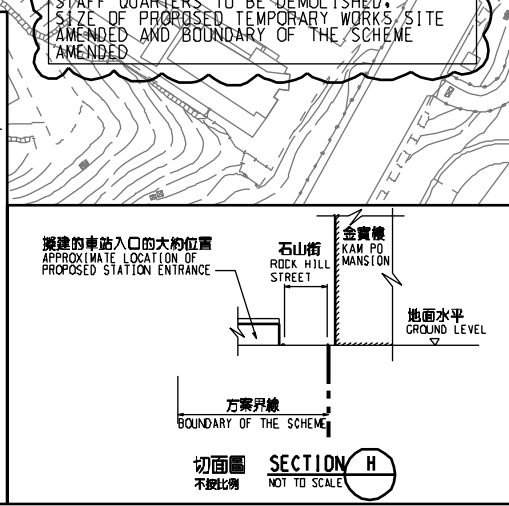
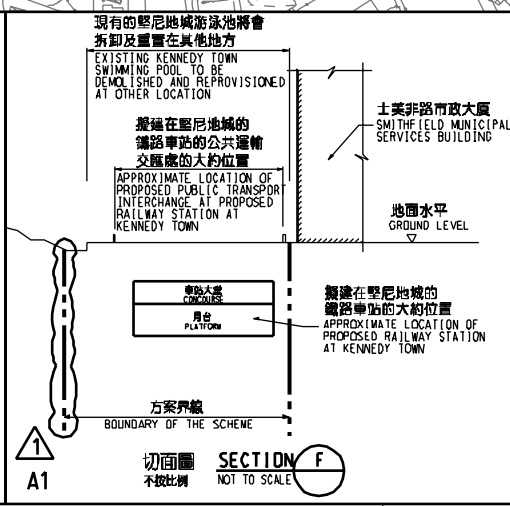
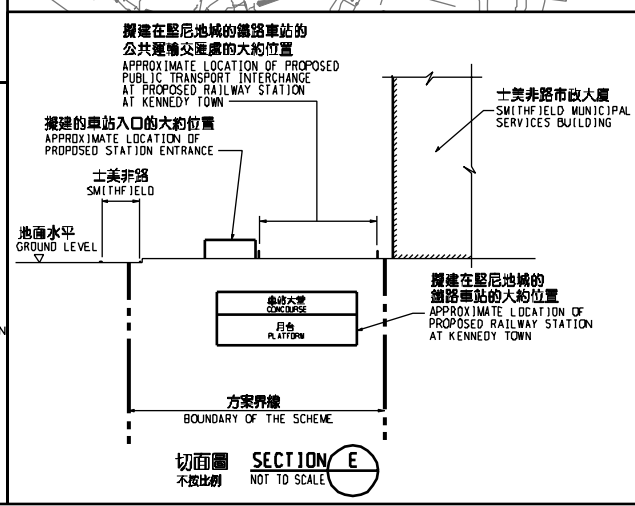
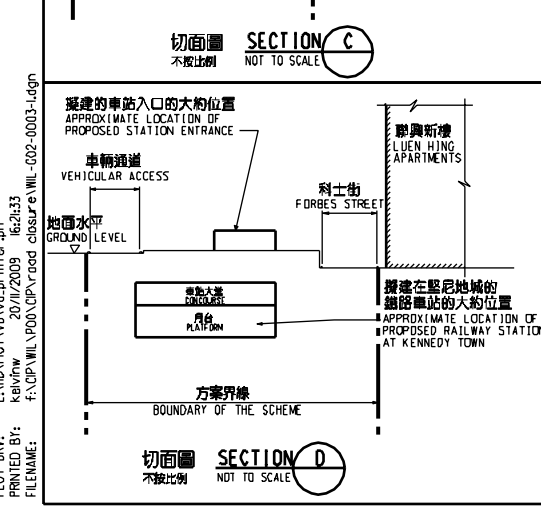
說明 NOTES

此圖根據第WIL-G02號(修改1)圖則制訂，以黃色標明科士街臨時遊樂場將暫時封閉的休憩用地和堅尼地城遊樂場將暫時封閉的部分休憩用地，分別以粉紅色和藍色標明士美非路利科士街將暫時封閉部分行車道及行人路路面的路段，以及以綠色標明毗鄰科士街臨時遊樂場和堅尼地城遊樂場將暫時封閉路面的道路。

THIS DRAWING IS PREPARED BASED ON DRAWING NO. WIL-G02 (REVISION 1) AND IS INTENDED TO SHOW THE OPEN SPACE IN FORBES STREET TEMPORARY PLAYGROUND AND PARTS OF THE OPEN SPACE IN KENNEDY TOWN PLAYGROUND (HIGHLIGHTED IN YELLOW) TO BE TEMPORARILY CLOSED. THE SECTIONS OF SMITHFIELD AND FORBES STREET (HIGHLIGHTED IN PINK AND BLUE RESPECTIVELY) OF WHICH PARTS OF THE CARRIAGEWAY AND FOOTPATH WIDTHS ARE TO BE TEMPORARILY CLOSED, AND THE SECTION OF THE ROAD ADJACENT TO FORBES STREET TEMPORARY PLAYGROUND AND KENNEDY TOWN PLAYGROUND (HIGHLIGHTED IN GREEN) TO BE TEMPORARILY CLOSED.



- 一般說明 GENERAL NOTES**
1. 切面圖顯示鐵路設施的形狀和輪廓均屬示意性質。GEOMETRY AND CONFIGURATION OF RAILWAY FACILITIES SHOWN IN SECTIONS ARE SCHEMATIC.
 2. 所有在劃定方案界線內的道路(包括行車道、行人徑及露天地方)，無論有否在圖則中顯示，都有可能永久或暫時封閉或大幅改動。ALL ROADS INCLUDING CARRIAGEWAYS, FOOTPATHS AND OPEN PLACE WITHIN THE BOUNDARY OF THE SCHEME, WHETHER OR NOT SHOWN ON THE DRAWINGS MAY BE CLOSED OR ALTERED SUBSTANTIALLY ON A PERMANENT OR TEMPORARY BASIS.
 3. 除非圖則中特別註明，否則在方案界線內，或與方案界線毗鄰的所有建築物的汽車通道及行人通道，包括逃生路徑，將會保留。UNLESS NOTED OTHERWISE ON THE DRAWINGS, VEHICULAR AND PEDESTRIAN ACCESSES INCLUDING MEANS OF ESCAPE TO AND FROM ALL BUILDINGS WITHIN OR ADJACENT TO THE BOUNDARY OF THE SCHEME ARE TO BE MAINTAINED.
 4. 所有水平均為約數，以米為單位，並高於香港的主水平基準。ALL LEVELS ARE APPROXIMATE AND IN METRES ABOVE HONG KONG PRINCIPAL DATUM (MPD).
 5. 圖則顯示的建造方法分界線只是大概位置，有關界線可因應當時的地盤情況而作出改動。BOUNDARIES SHOWN ON DRAWINGS FOR THE CONSTRUCTION METHODS TO BE CARRIED OUT ARE APPROXIMATE ONLY. THESE BOUNDARIES MAY BE ALTERED ON SITE TO SUIT PREVAILING SITE CONDITIONS.



修訂表 TABLE OF AMENDMENTS

修訂日期 REV DATE	修訂人 BY	修訂類別 SUB	修訂內容 APP	說明 DESCRIPTION

SIGNED

內聘顧問 HD PING KUN
路政署
鐵路發展處總工程師(1-1)
CHIEF ENGINEER / RAILWAY DEVELOPMENT (1-1)
HIGHWAYS DEPARTMENT

19/11/2009
發出日期 DATE OF ISSUE

鐵路條例(第519章)
地下鐵路(「地鐵」) - 西港島線
暫時封閉科士街臨時遊樂場的休憩用地和堅尼地城遊樂場的部分休憩用地，以及部分士美非路、科士街和毗鄰科士街臨時遊樂場和堅尼地城遊樂場的道路

RAILWAYS ORDINANCE (CHAPTER 519)
MASS TRANSIT RAILWAY (MTR) - WEST ISLAND LINE
TEMPORARY CLOSURE OF THE OPEN SPACE IN FORBES STREET TEMPORARY PLAYGROUND AND PARTS OF THE OPEN SPACE IN KENNEDY TOWN PLAYGROUND AND SECTIONS OF SMITHFIELD, FORBES STREET AND THE ROAD ADJACENT TO FORBES STREET TEMPORARY PLAYGROUND AND KENNEDY TOWN PLAYGROUND

圖號 DRAWING NO. WIL/G02/0003/1
比例 SCALE 1:1000 (A1)
AS SHOWN OR AS SHOWN

香港特別行政區政府
THE GOVERNMENT OF THE HONG KONG SPECIAL ADMINISTRATIVE REGION
路政署
HIGHWAYS DEPARTMENT
鐵路拓展處
RAILWAY DEVELOPMENT OFFICE

PLOT: DRV: EX:\D:\P01\VB\B\printer.dvt
PRINTED BY: 20/11/2009 16:26:33
FILENAME: F:\CP\WIL\POD\CPV\road\classr\w\l-002-0003-1.dgn