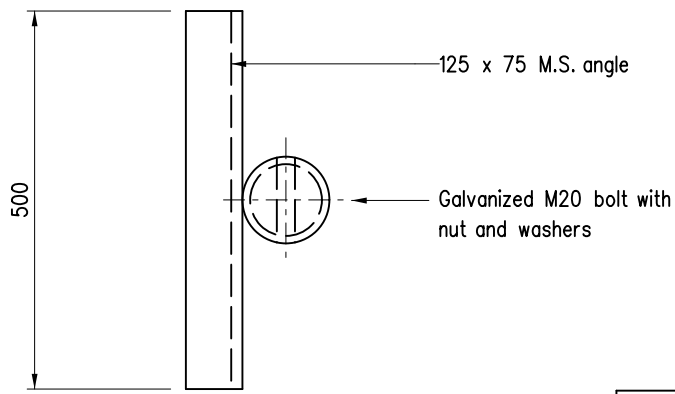


ELEVATION

END ELEVATION



PLAN

Notes:

1. Dimensions are in millimetres.
2. 100x50x5 R.H.S. may be used for post as alternatives. See Drg. No. H2123 & H2124.
3. Components are to be hot dip galvanized to BS EN ISO 1461 : 2022.
4. Anchor posts are to be used with compacted earth footings.
5. Steel is to be Grade 43A B.S. 4360

B	Note 2 & 3 updated	Original Signed	Nov 24
A	Note 3 updated	-	Sep 07
	Former Drg. No. H2009 with general revision	-	Jun 94
REF.	REVISION	SIGNATURE	DATE

ANCHOR FOR END BEAM SECTION OF BEAM BARRIER

HIGHWAYS DEPARTMENT

REFERENCE	DRAWING No.	CAD
SCALE 1 : 10	H 2116B	