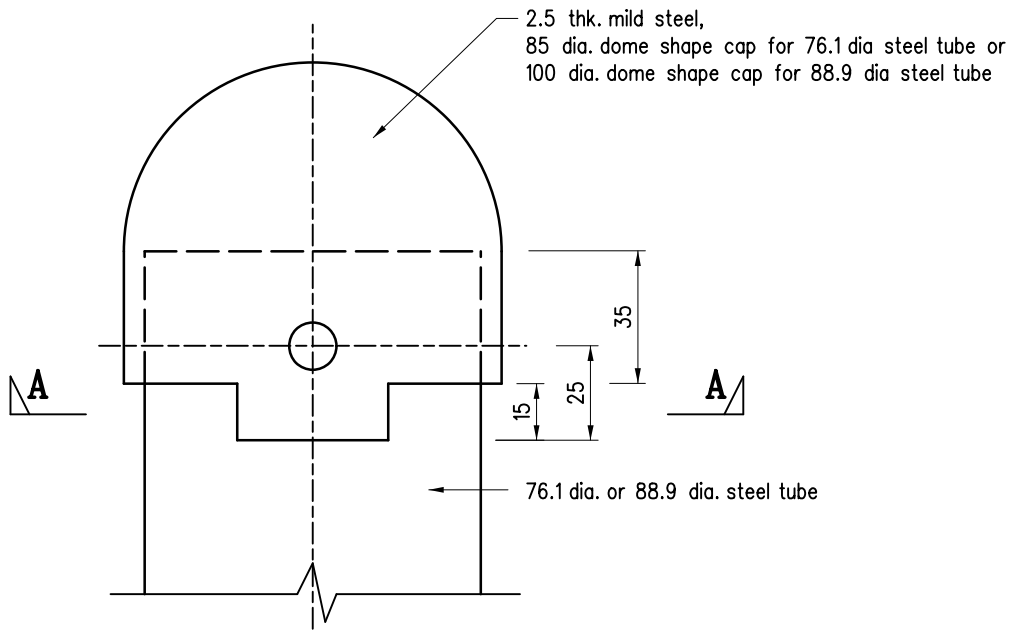


SECTION A-A



ELEVATION

Notes :

1. All dimensions are in millimetres.
2. All steelwork shall be Grade S275 to BS EN 10025-2:2019 and shall be hot dip galvanized to BS EN ISO 1461:2022.
3. Stainless steel bolts and nuts shall be Grade A2-70 to BS EN ISO 3506-1:2020 and BS EN ISO 3506-2:2009, spring washer shall be to BS EN ISO 464:2015.

A	Note 2 and 3 updated	Original signed	Dec 24
		-	Feb 19
REF.	REVISION	SIGNATURE	DATE

**DETACHABLE DOME
SHAPE CAP FOR
TRAFFIC SIGN POST**

HIGHWAYS DEPARTMENT

REFERENCE

DRAWING No.

CAD

SCALE

1:2

H 2300A