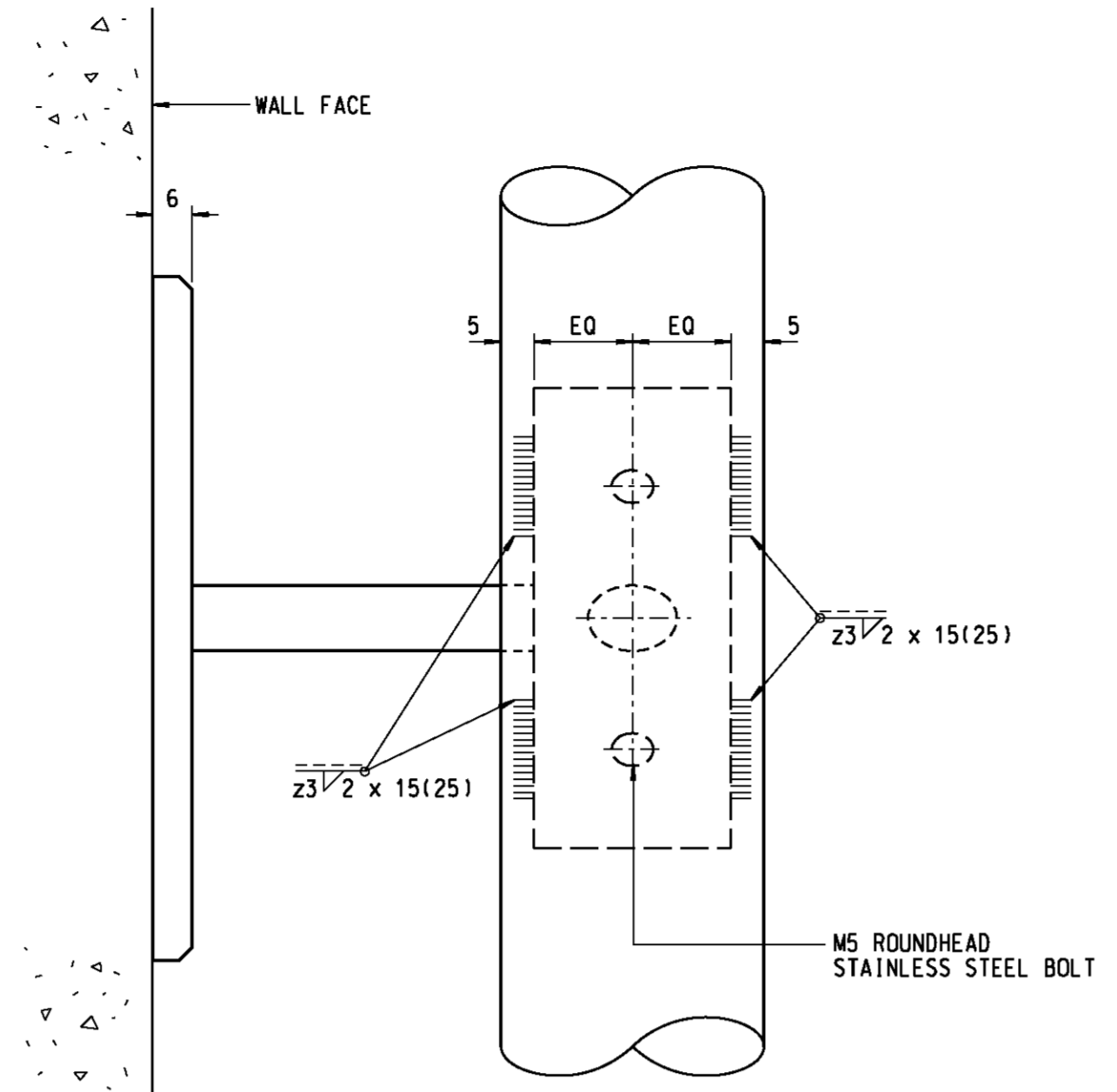
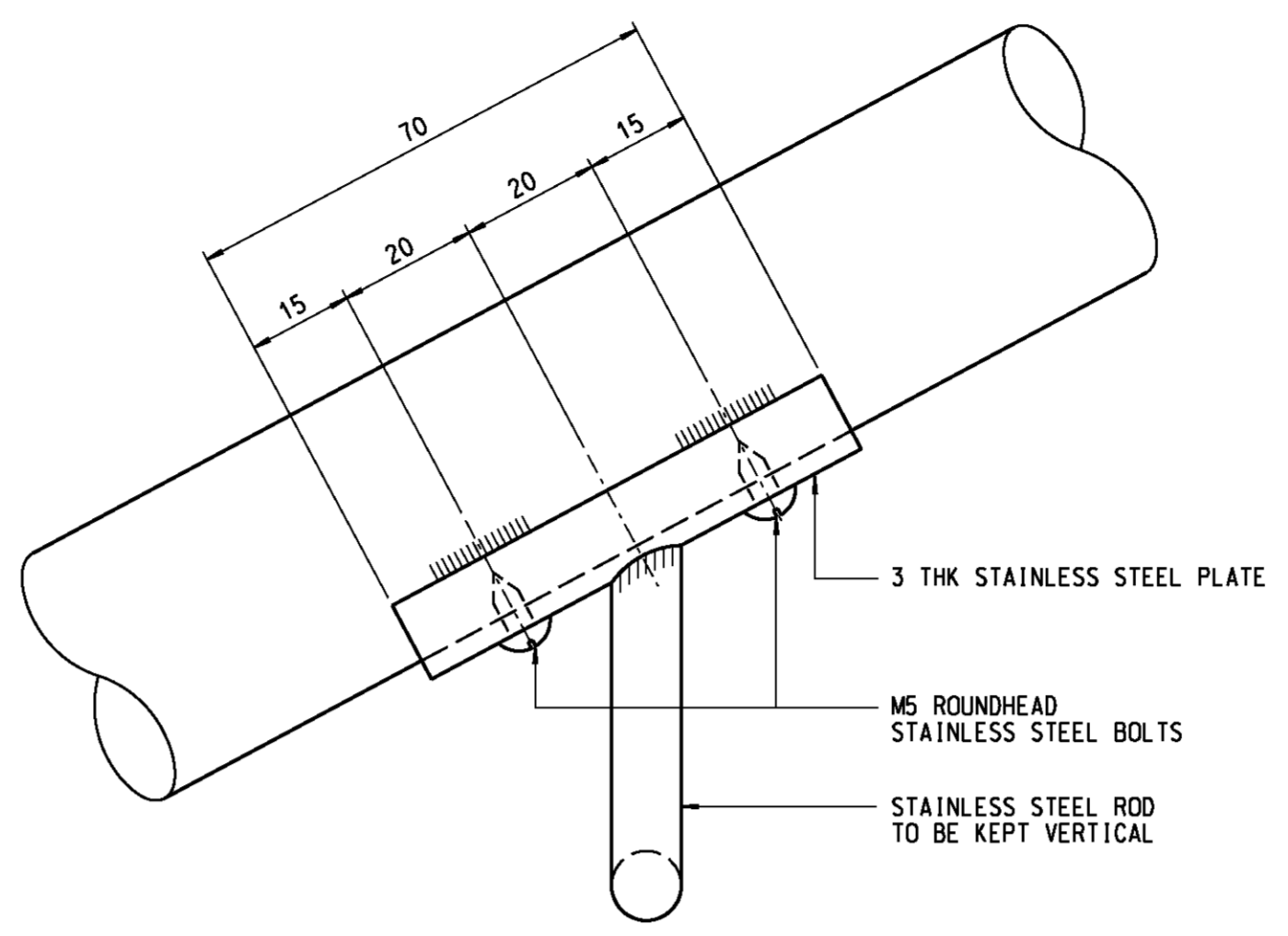


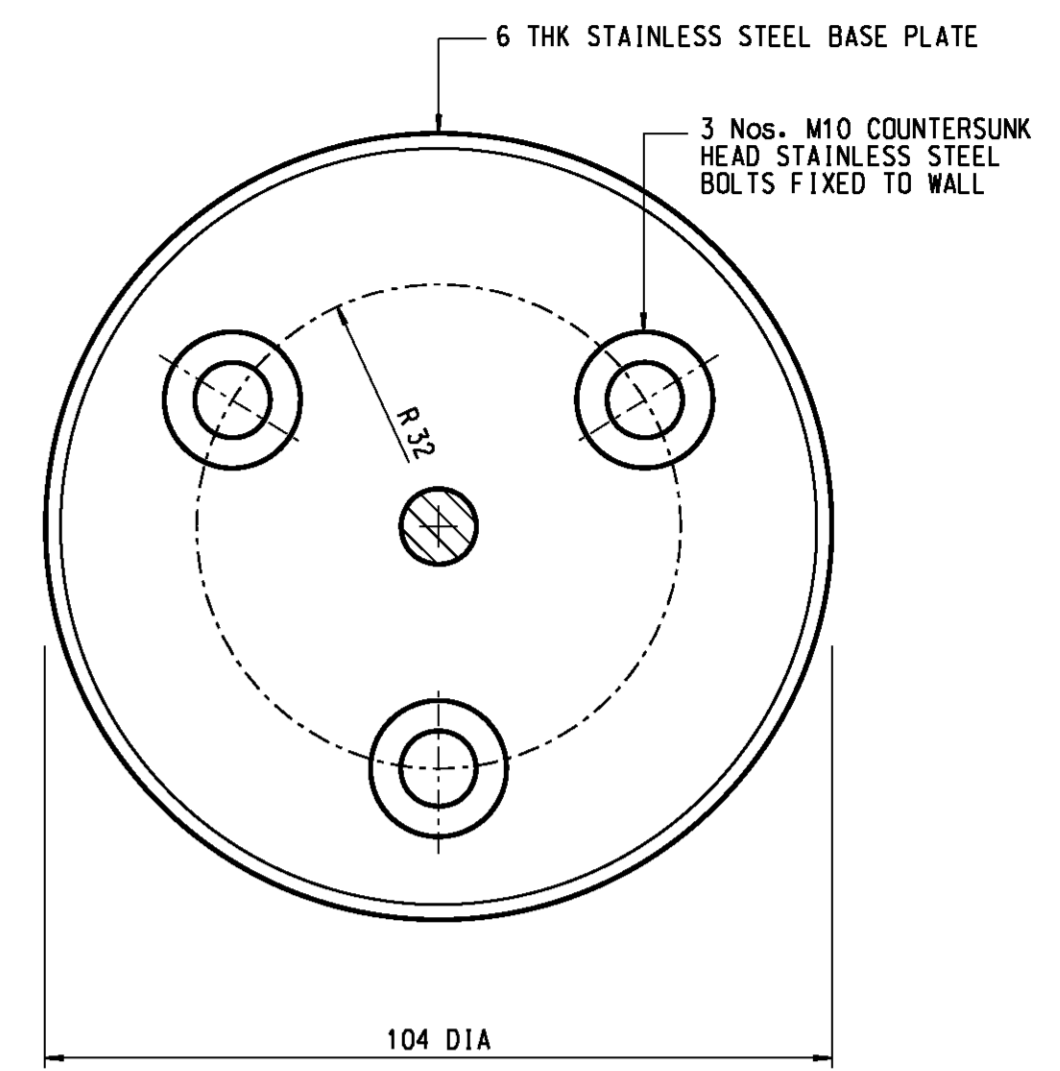
**TYPICAL SECTION OF HANDRAIL TO WALL STRUCTURE**  
SCALE 1:1



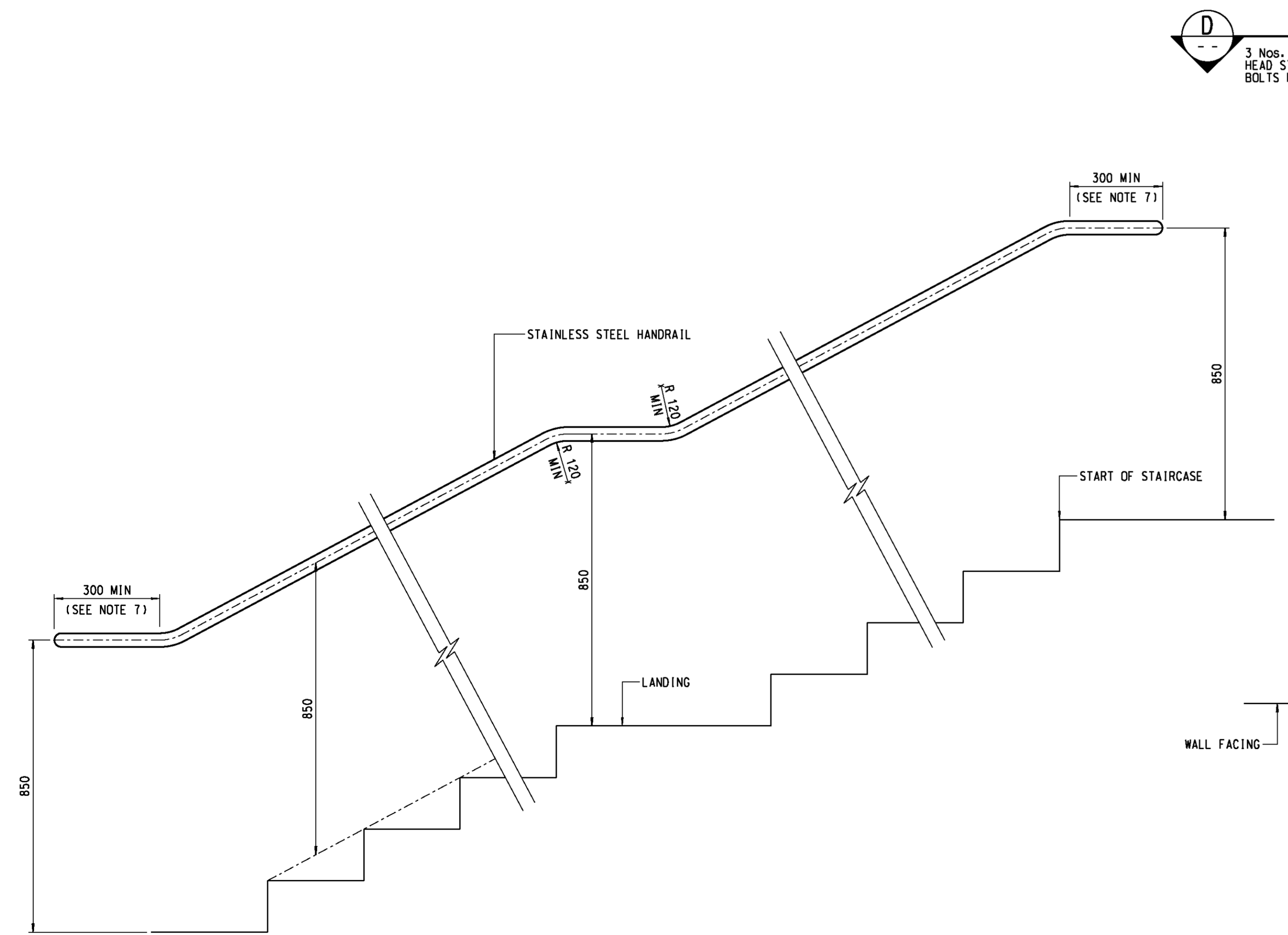
**PLAN**  
SCALE 1:1



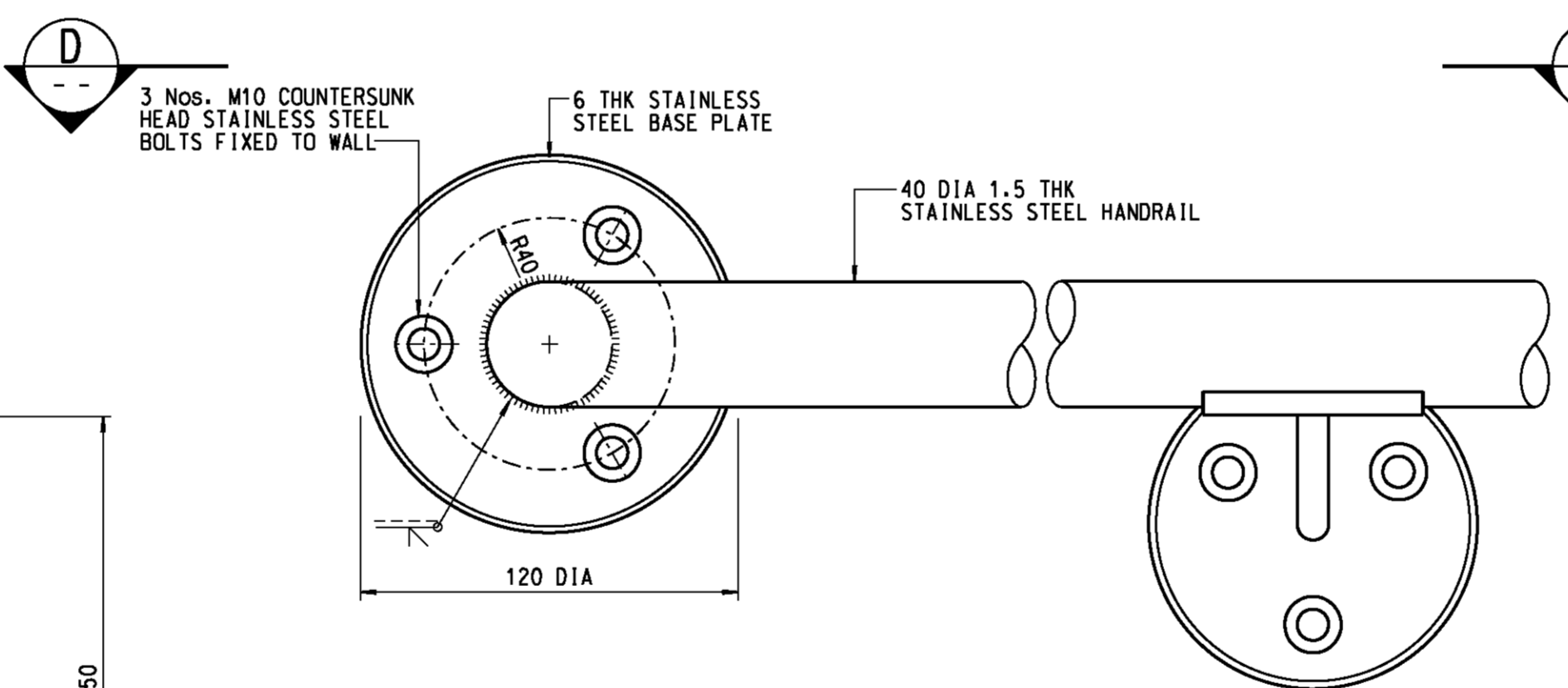
**SECTION**  
SCALE 1:1



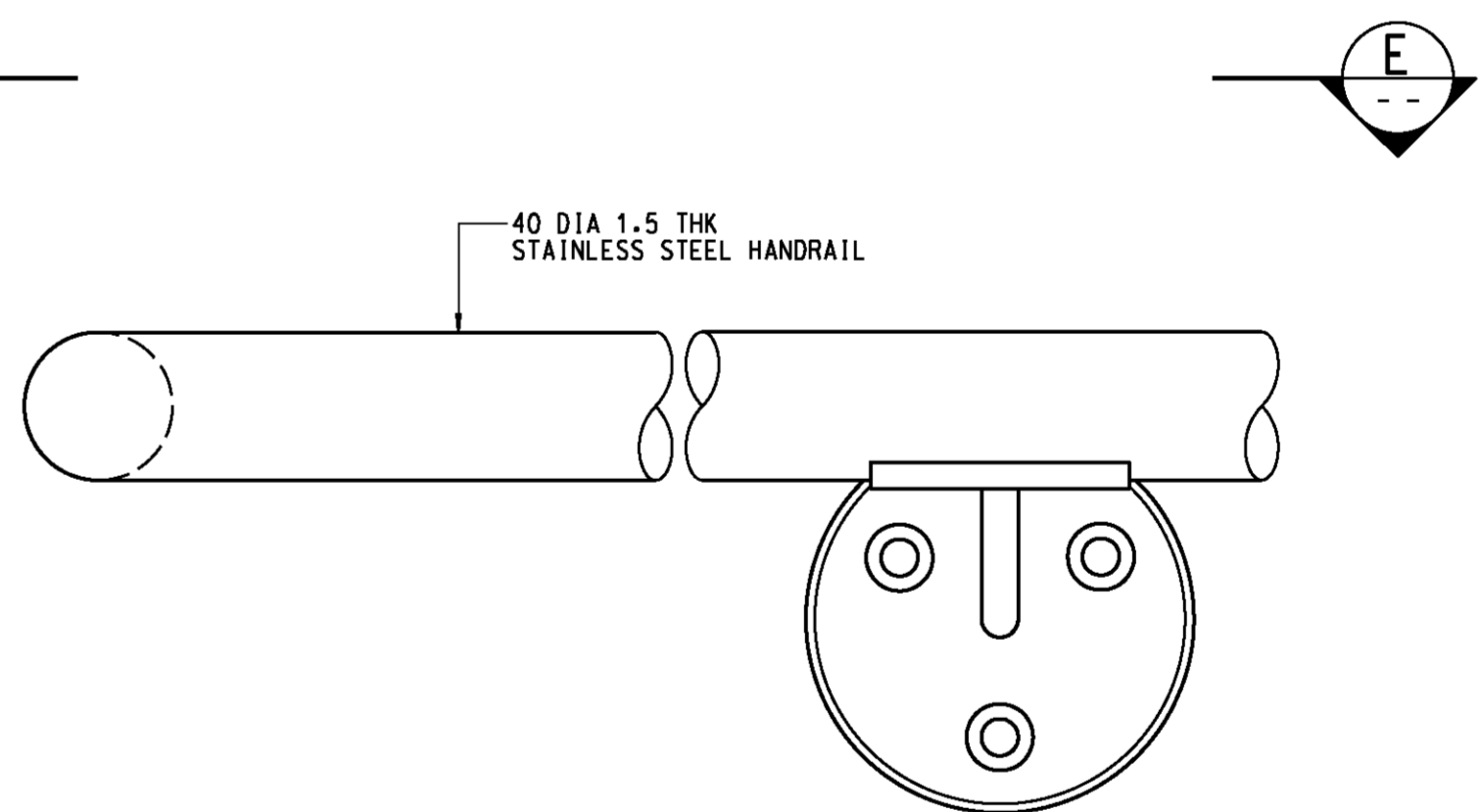
**ELEVATION**  
SCALE 1:1



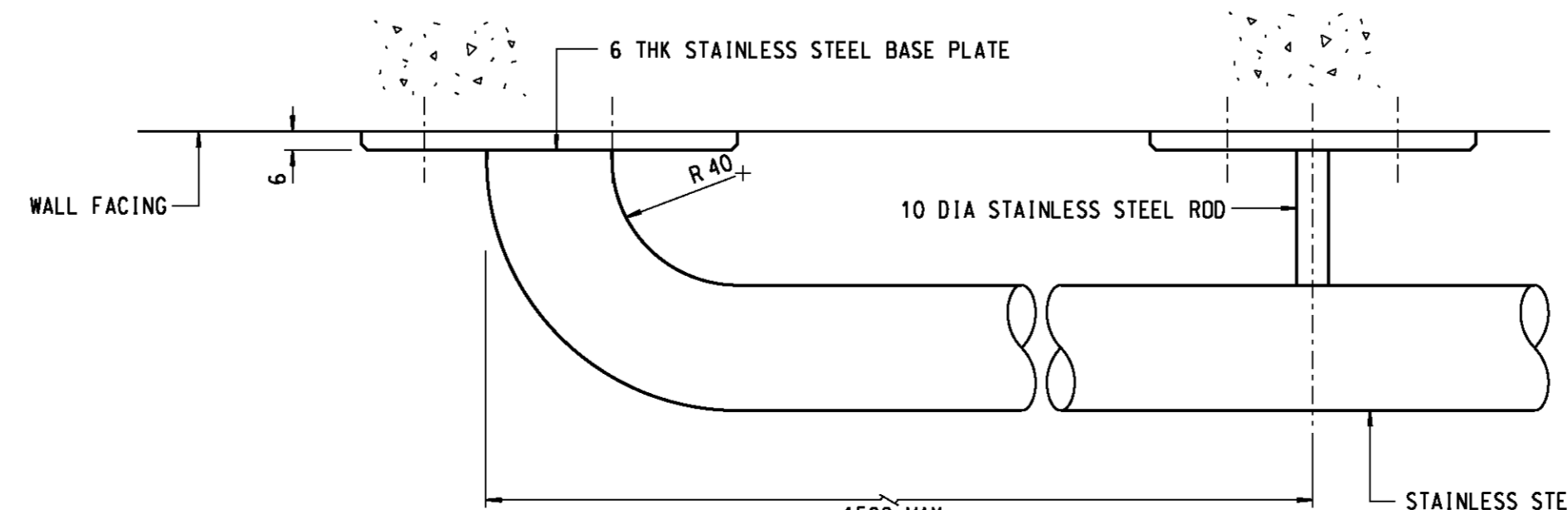
**ELEVATION AT STAIRCASE**  
SCALE 1:10



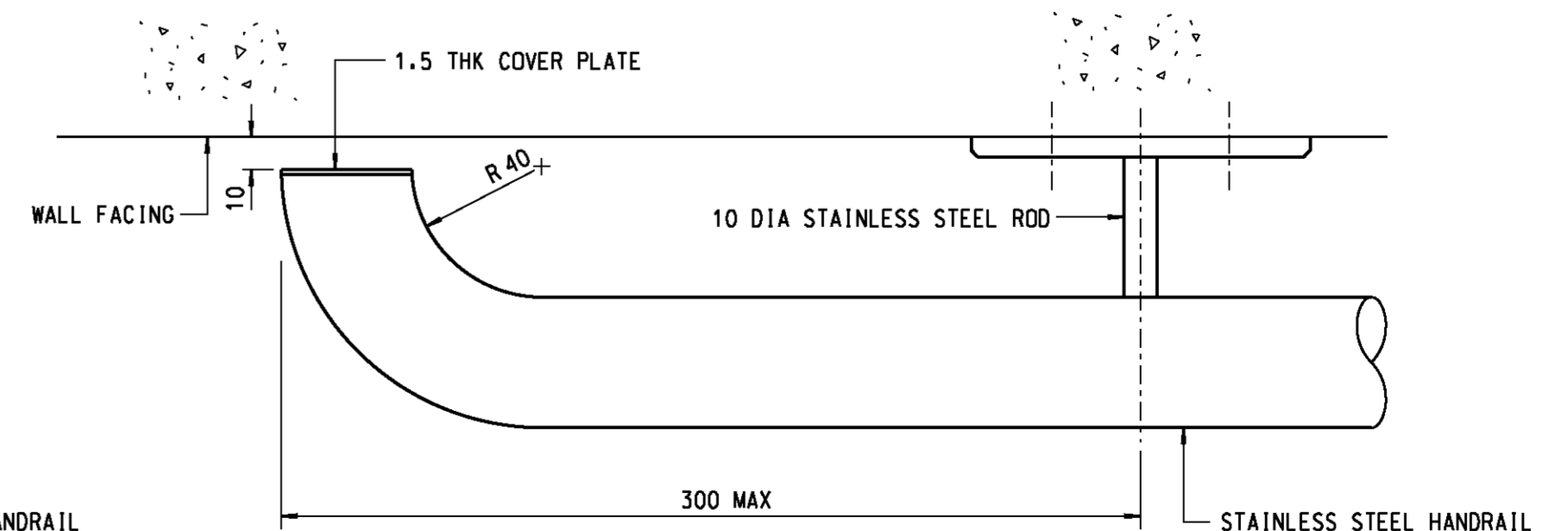
**ELEVATION AT HANDRAIL END**  
SCALE 1:2  
(FOR LOCATION PRONE TO VEHICULAR COLLISION)



**ELEVATION AT HANDRAIL END**  
SCALE 1:2  
(FOR LOCATION NOT PRONE TO VEHICULAR COLLISION)



**PLAN**  
SCALE 1:2



**PLAN**  
SCALE 1:2

- NOTES:
- ALL DIMENSIONS ARE IN MILLIMETRES.
  - SEATING BRACKETS TO BE INSTALLED AT APPROXIMATELY 1500 C/C.
  - ALL JOINTS WELDED AND GROUND SMOOTH.
  - ALL STAINLESS BOLTS AND NUTS TO BE GRADE A4-70.
  - ALL STAINLESS STEEL PLATE AND SECTION TO BE GRADE 316 S33.
  - SUBJECT TO THE AGREEMENT OF THE ENGINEER, AN ALTERNATIVE HANDRAIL DIAMETER OF 32mm TO 40mm MAY BE ADOPTED.
  - THE END PORTION MAY BE BENT DOWNWARDS OR AROUND A STRUCTURE TO SUIT SITE CONDITIONS AS DIRECTED BY THE ENGINEER.

no.	date	description	initial
B	09/09	END DETAILS REVISED	SIGNED K.S. LAM, E/P2-2
			SIGNED P.T. LEUNG, SE/P2
A	08/07	GENERAL DETAILS ADDED - DRAWING REDRAWN	SIGNED S.W. NG, E/P2-2
			SIGNED C.K. CHAN, SE/P2

name	signature	date
designed	E/MK 89	SIGNED 02/89
drawn	T. W. LAM	SIGNED 10/05
senior technical officer	S. F. CHAN	SIGNED 10/05
project engineer	M. H. TAM	SIGNED 10/05
senior engineer	C. K. CHAN	SIGNED 10/05

approved  
SIGNED  
P. K. LEE  
Chief Highway Engineer  
18/10/05  
date

contract no.  
file no.  
project no.  
contract

drawing title  
**ADDITIONAL HANDRAIL TO WALL STRUCTURE FOR STAIRCASE & RAMP OF FOOTBRIDGE / SUBWAY**

drawing no. **SSD101-B** scale **AS SHOWN**

office **BRIDGES AND STRUCTURES DIVISION** 結構標部及  
**HONG KONG DEPARTMENT OF HIGHWAYS** 香港路政署