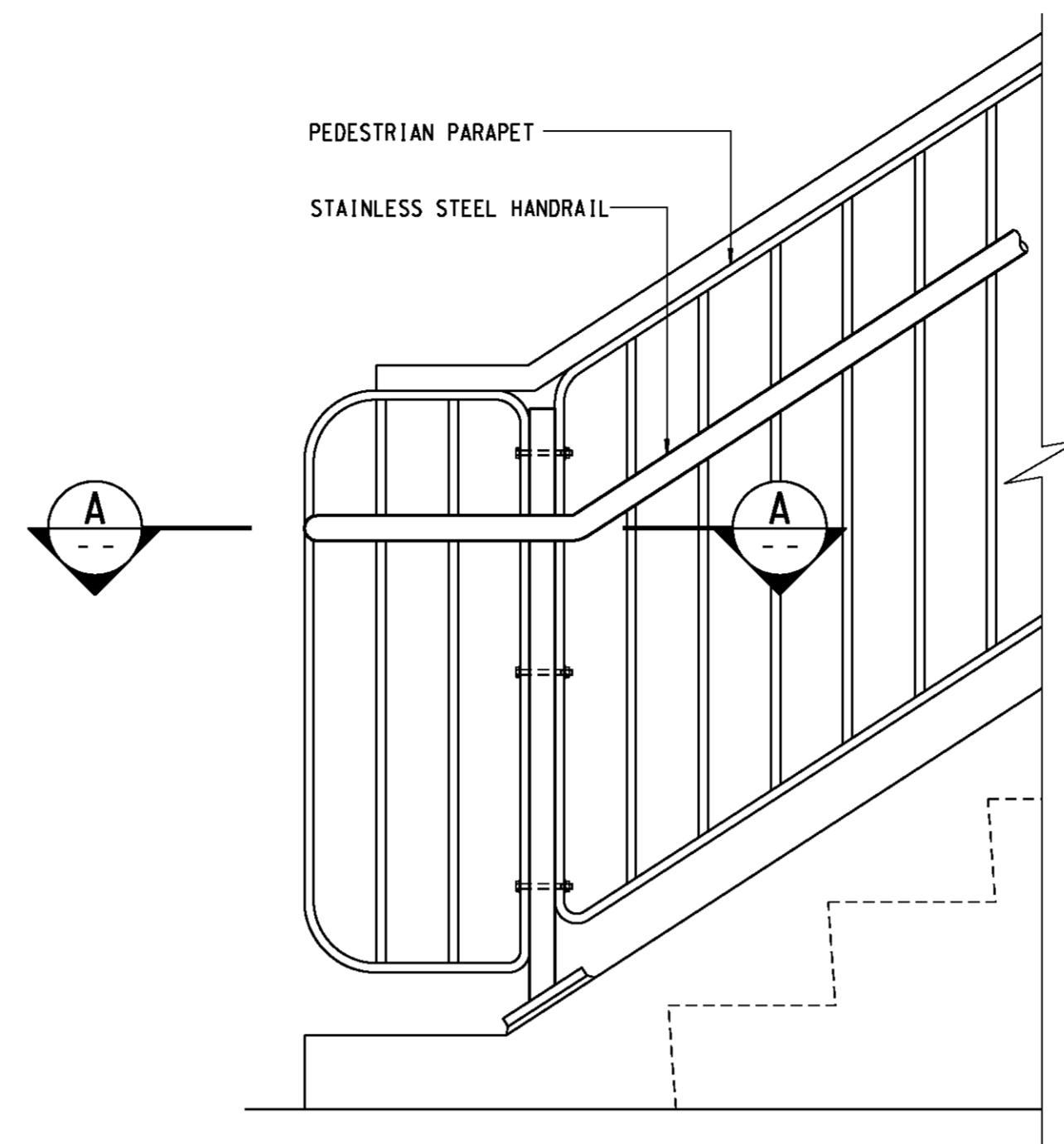


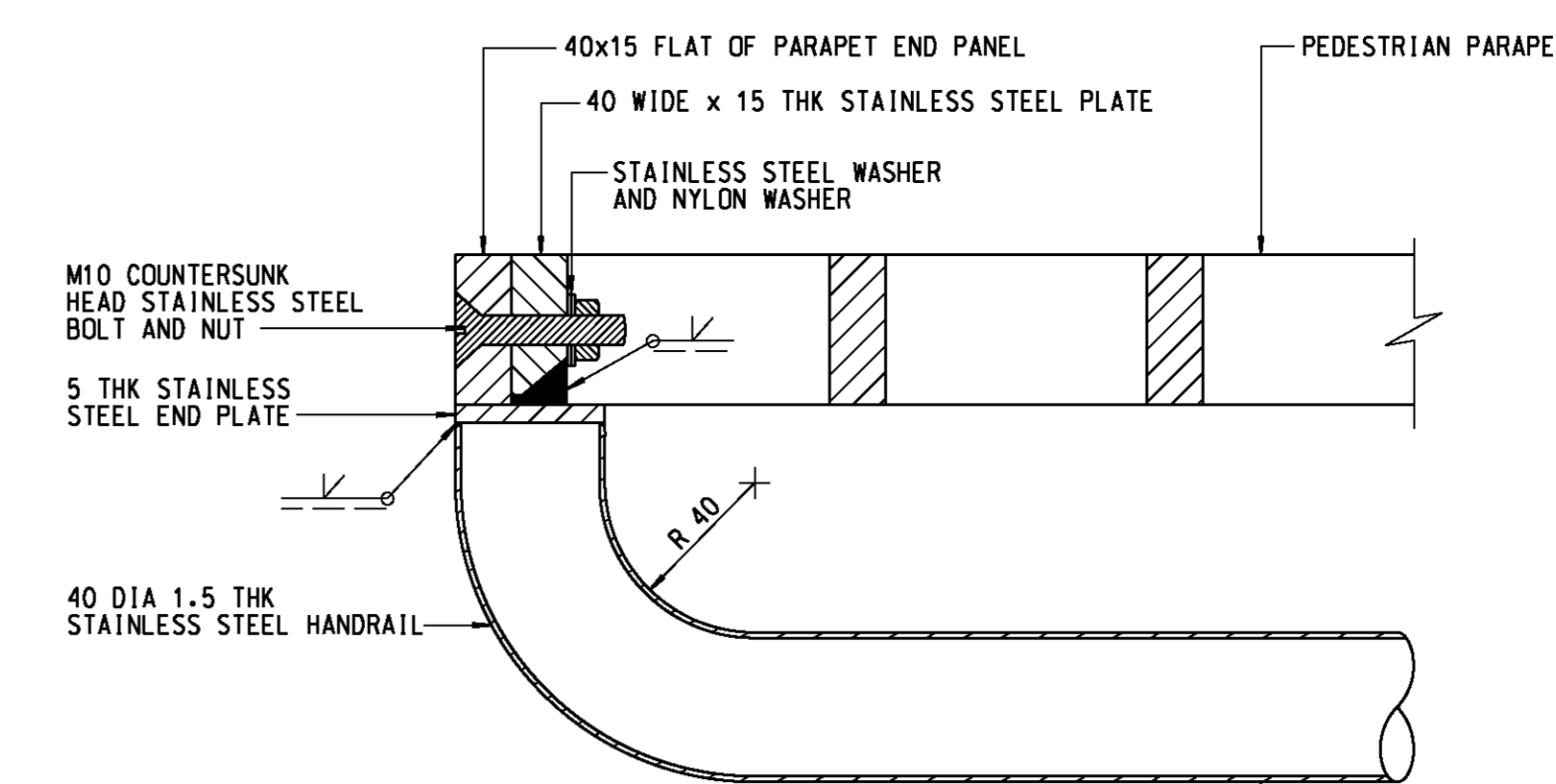
ELEVATION OF HANDRAIL AT STAIRCASE

SCALE 1:10
(PEDESTRIAN PARAPET NOT SHOWN FOR CLARITY)



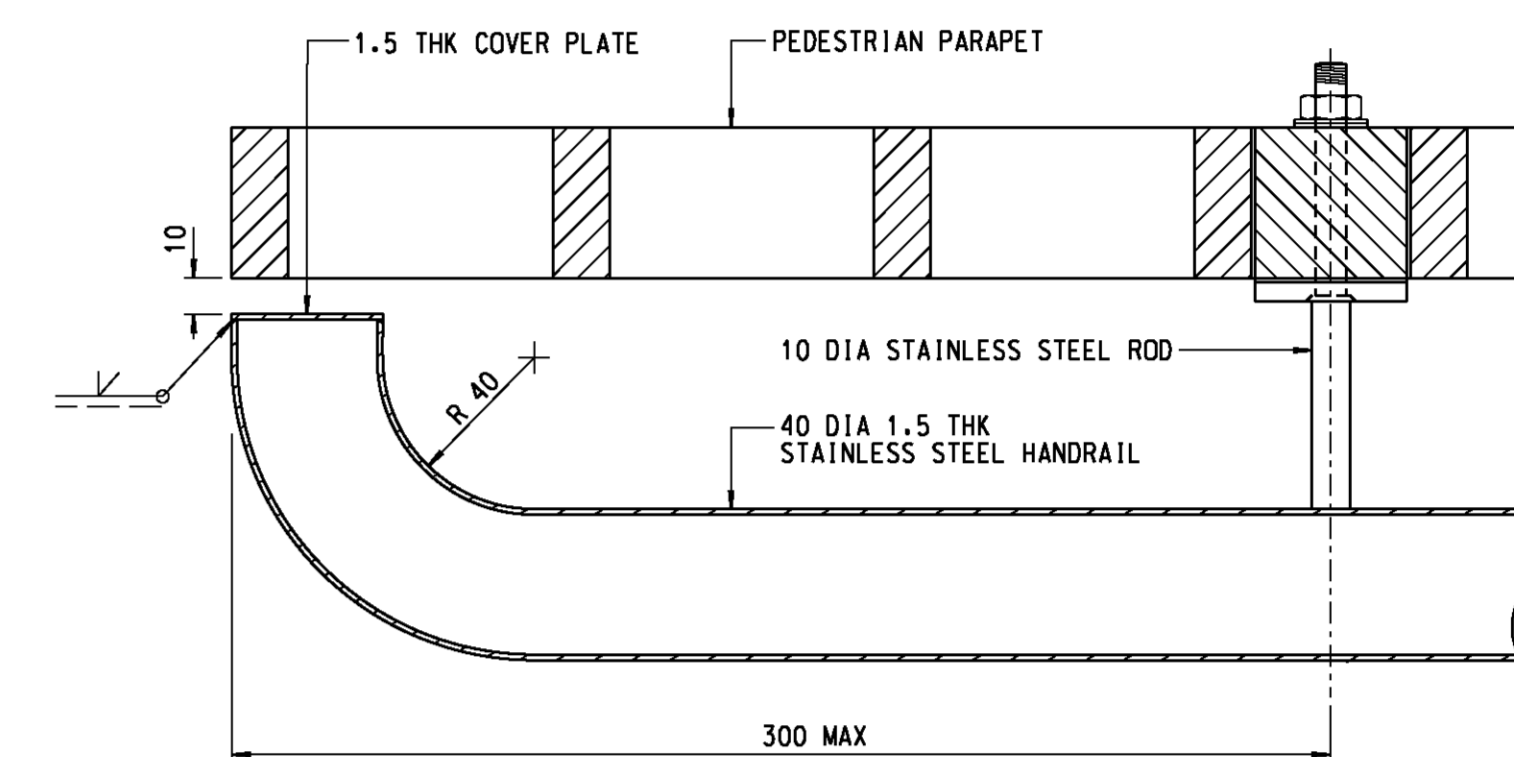
ELEVATION OF HANDRAIL END AT STAIRCASE PARAPET

SCALE 1:10



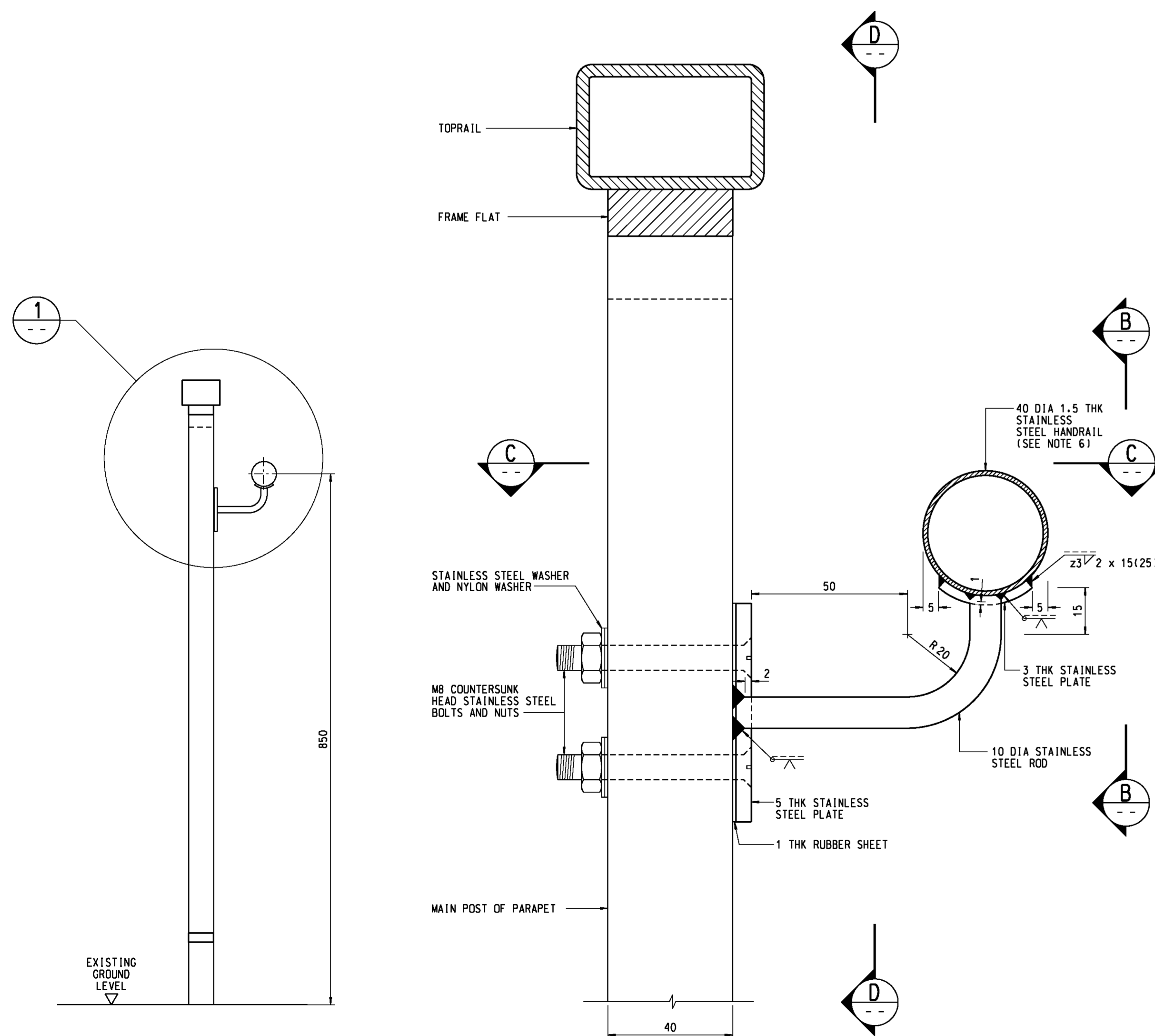
SECTION A

SCALE 1:2
(FOR LOCATION PRONE TO VEHICULAR COLLISION)



SECTION A

SCALE 1:2
(FOR LOCATION NOT PRONE TO VEHICULAR COLLISION)

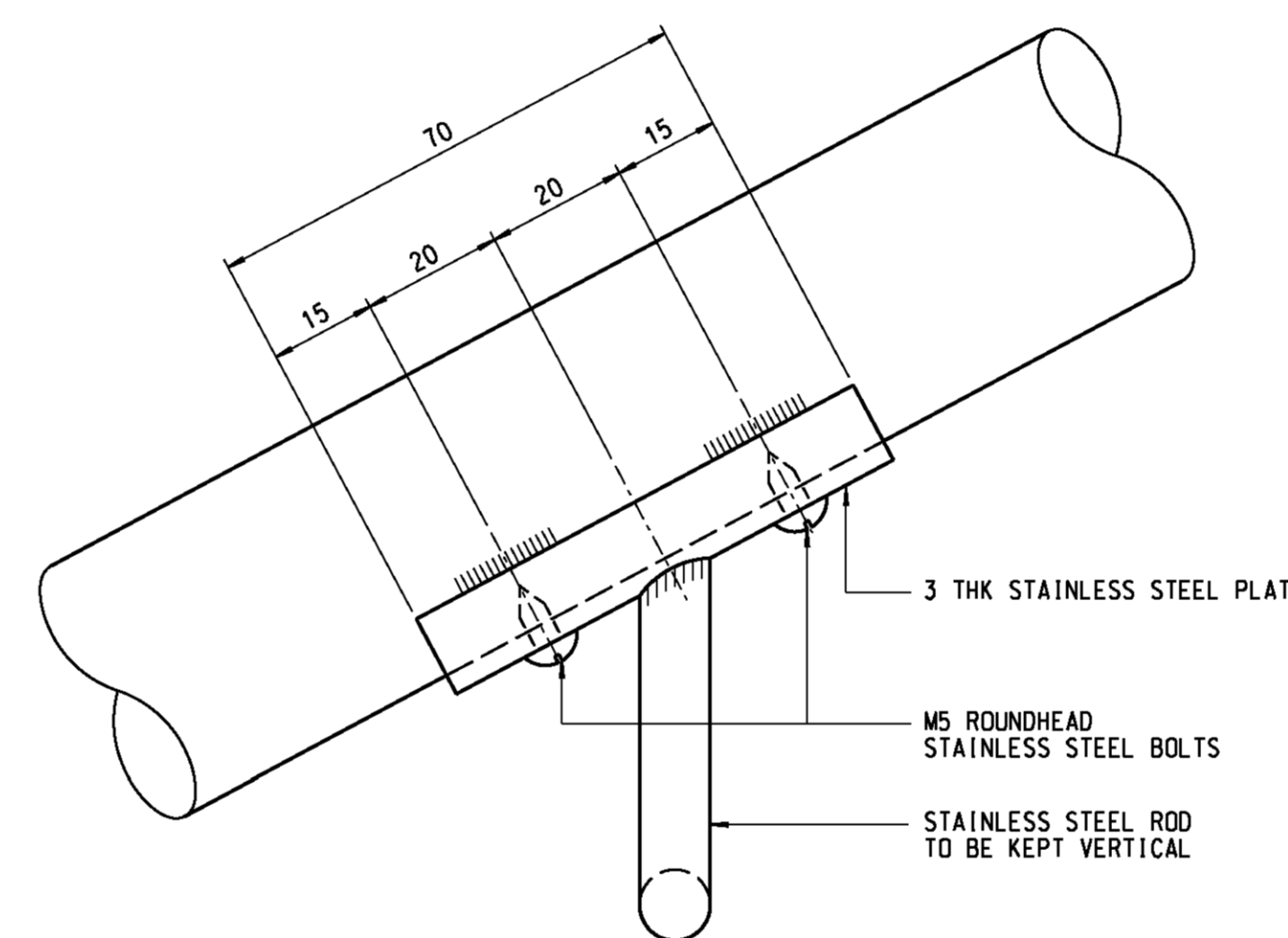


TYPICAL SECTION OF PARAPET AND HANDRAIL

SCALE 1:5

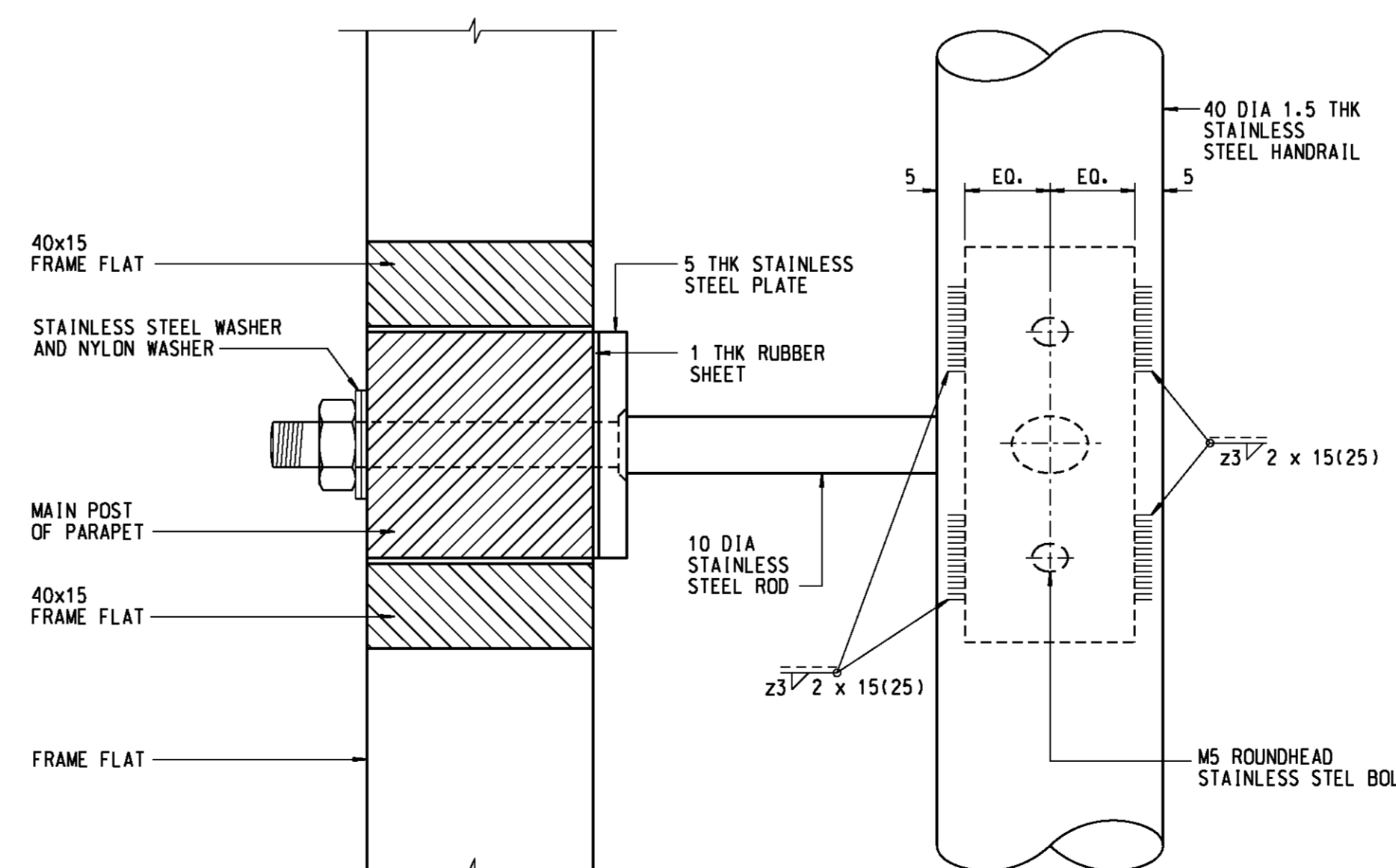
DETAIL 1

SCALE 1:1



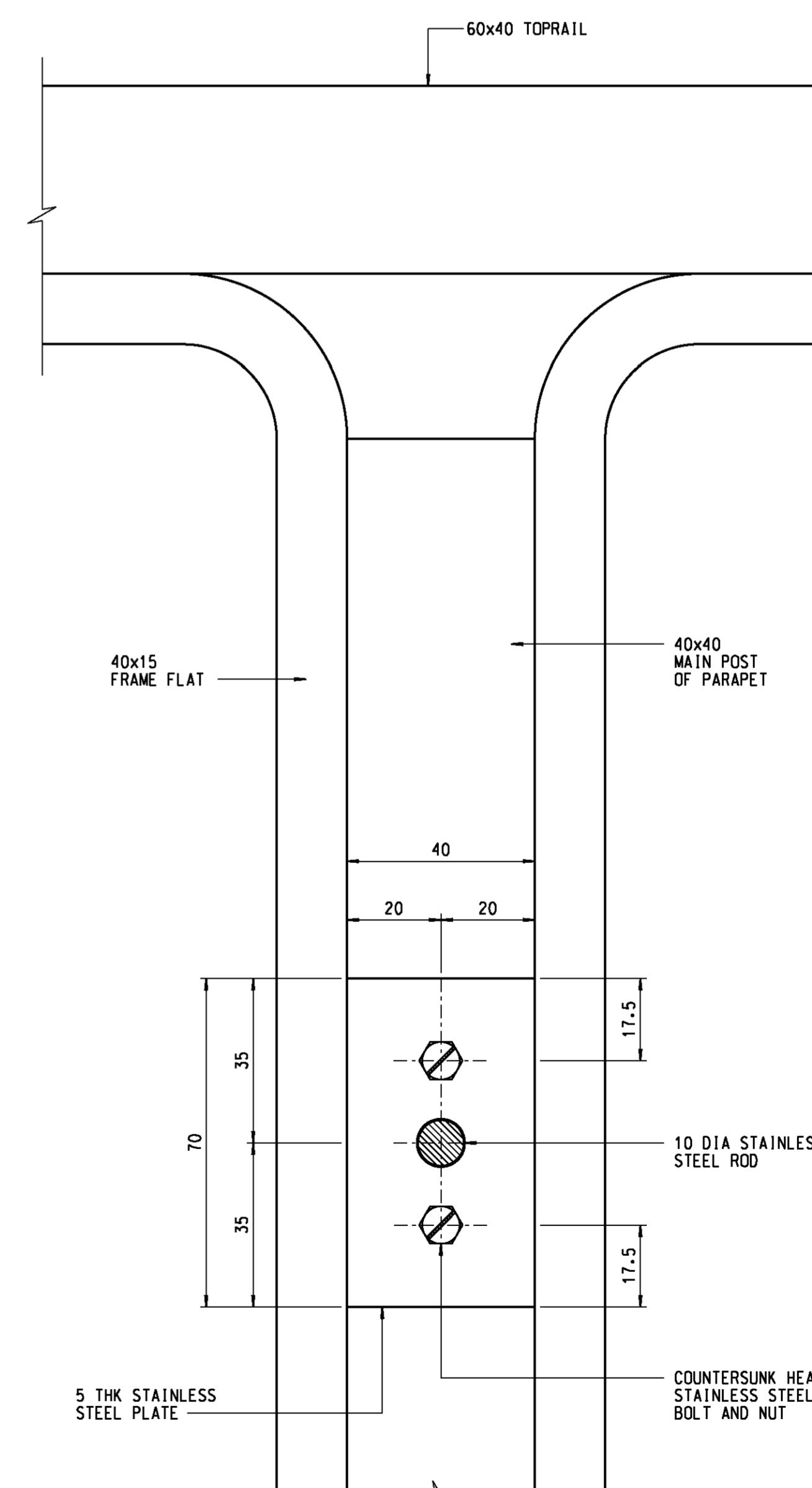
ELEVATION B

SCALE 1:1



PLAN C

SCALE 1:1



ELEVATION D

SCALE 1:1

- NOTES:
- ALL DIMENSIONS ARE IN MILLIMETRES.
 - SEATING BRACKETS TO BE INSTALLED AT APPROXIMATELY 1500 C/C.
 - ALL JOINTS WELDED AND GROUND SMOOTH.
 - ALL STAINLESS BOLTS AND NUTS TO BE GRADE A4-70.
 - ALL STAINLESS STEEL PLATE AND SECTION TO BE GRADE 316 S33.
 - SUBJECT TO THE AGREEMENT OF THE ENGINEER, AN ALTERNATIVE HANDRAIL DIAMETER OF 32mm TO 40mm MAY BE ADOPTED.
 - THE END PORTION MAY BE BENT DOWNWARDS OR AROUND A STRUCTURE TO SUIT SITE CONDITIONS AS DIRECTED BY THE ENGINEER.

B	09/09	END DETAILS REVISED	SIGNED K.S. LAM, E/P2-2
			SIGNED P.T. LEUNG, SE/P2
A	10/05	- STAINLESS STEEL GRADE REVISED - GENERAL DETAILS ADDED - DRAWING REDRAWN	SIGNED M.H. TAM, E/P2-4 SIGNED C.K. CHAN, SE/P2
no.	date	description	initial

REVISION			
designed	name	signature	date
	E/MK 89	SIGNED	02/89
drawn	T. W. LAM	SIGNED	10/05
senior technical officer	S. F. CHAN	SIGNED	10/05
project engineer	M. H. TAM	SIGNED	10/05
senior engineer	C. K. CHAN	SIGNED	10/05
approved	SIGNED P. K. LEE Chief Highway Engineer		18/10/05 date

contract no.

file no.

project no.

contract

drawing title

ADDITIONAL HANDRAIL DETAILS FOR PEDESTRIAN PARAPET

drawing no. **SSD102-B**

scale **AS SHOWN**

office **BRIDGES AND STRUCTURES DIVISION**

結構標部及

HIGHWAYS DEPARTMENT

路政署

HONG KONG