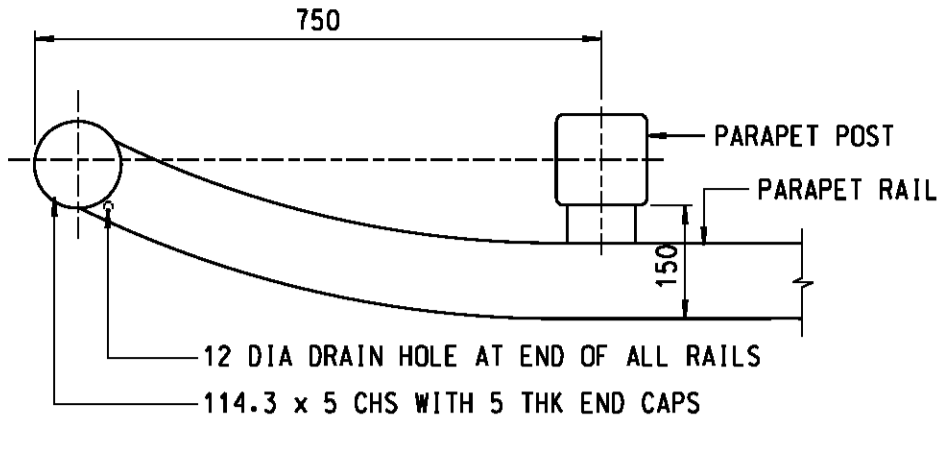
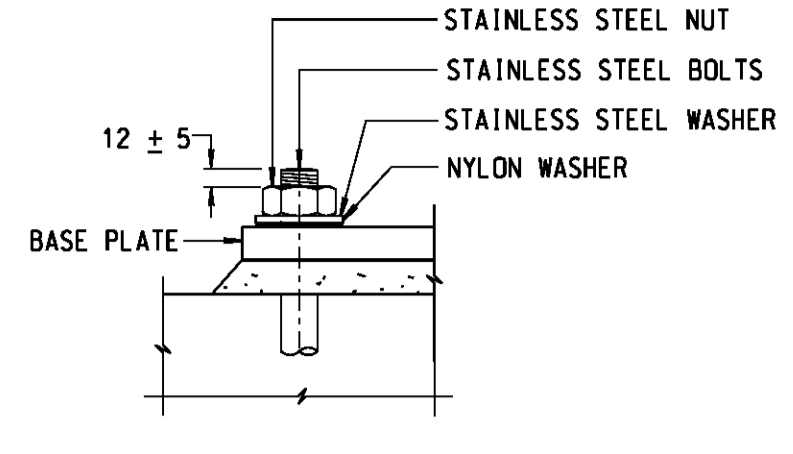


FRONT ELEVATION
SCALE 1:25



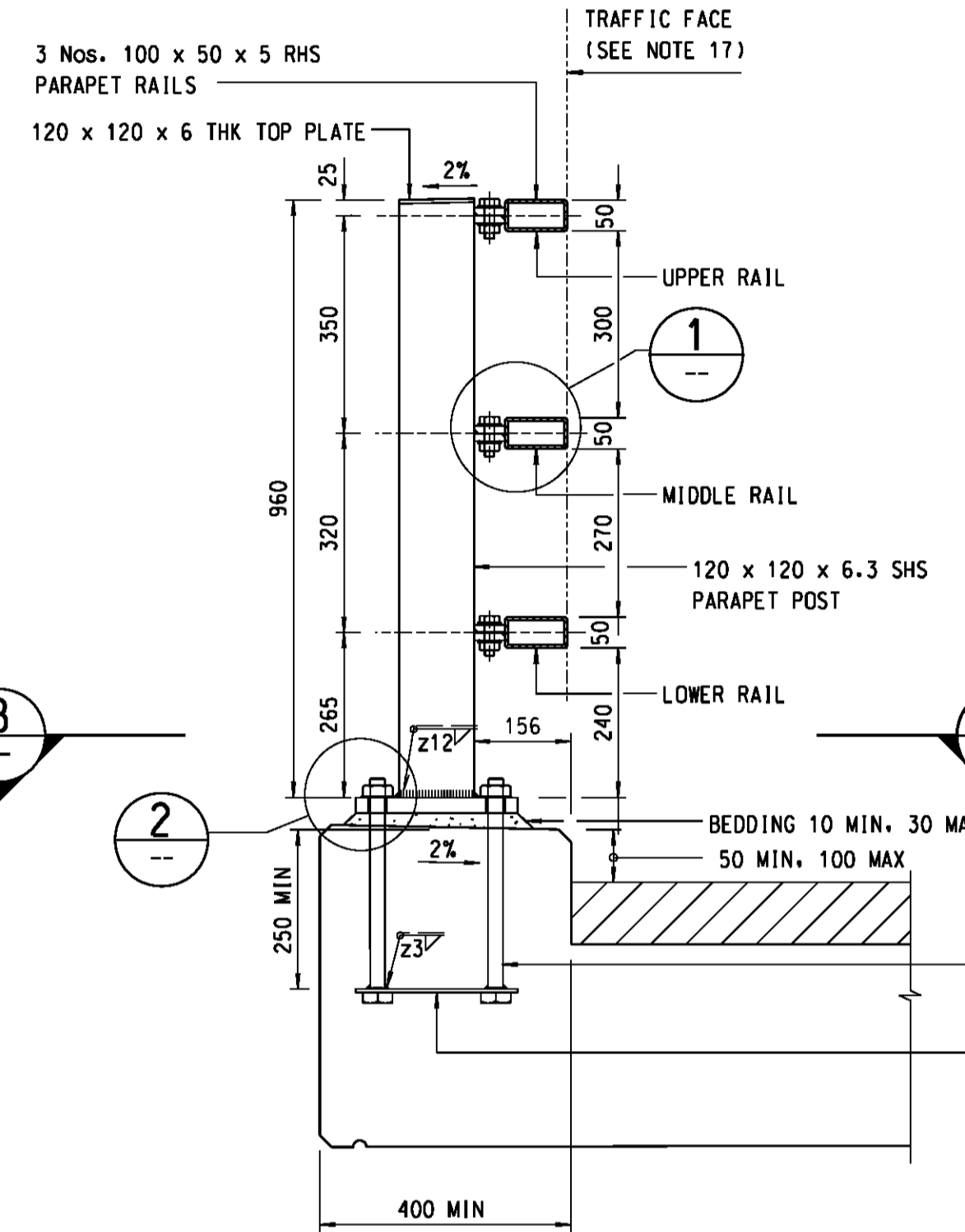
PLAN OF END DETAIL
SCALE 1:10



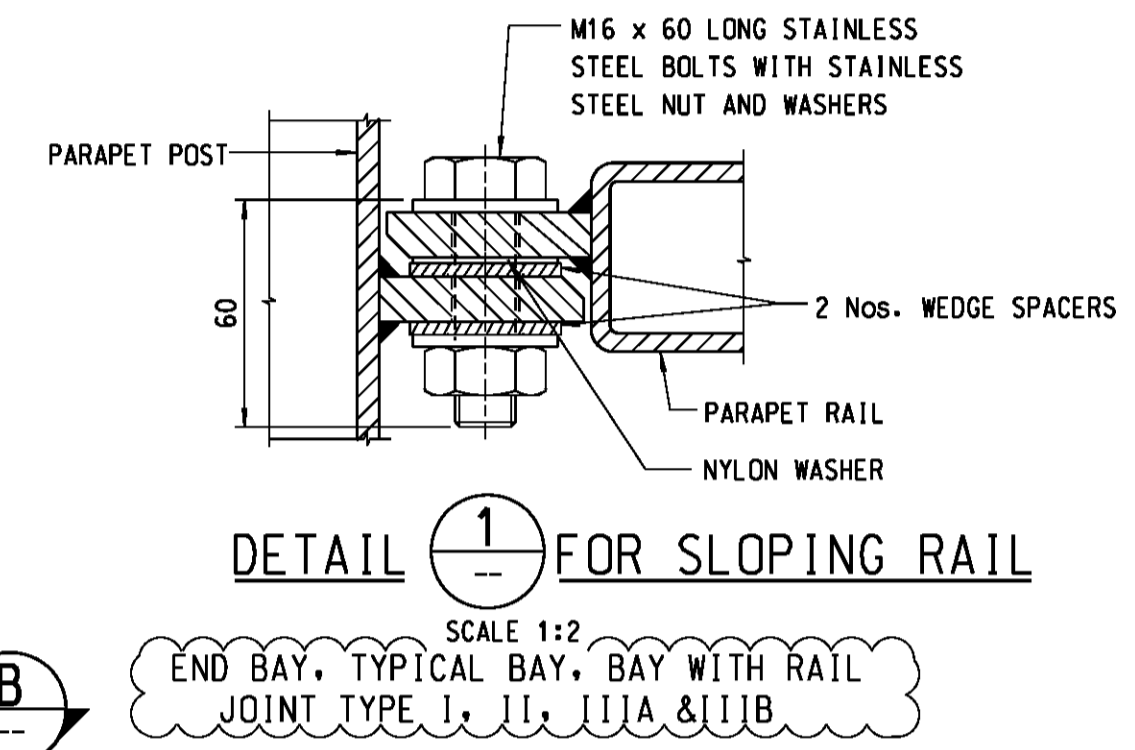
DETAIL
SCALE 1:5

16. AFTER FABRICATION, ALL STEELWORK SHALL BE PAINTED WITH THE FOLLOWING PAINT SYSTEM:
LIFE TO FIRST MAINTENANCE : 5 - 10 YEARS.
PRETREATMENT : TWO-PACK ETCH PRIMER; OR BRITISH RAIL "1-WASH" AS SPECIFIED IN BS5493, SECTION 2, CLAUSE 11.3.2
PRIMER : CHLORINATED RUBBER ZINC PHOSPHATE PRIMER, 70um MINIMUM TOTAL DRY-FILM THICKNESS.
UNDERCOAT : MICACEOUS IRON OXIDE CHLORINATED RUBBER UNDERCOAT, 100um MINIMUM TOTAL DRY-FILM THICKNESS.
FINISH : CHLORINATED RUBBER FINISH COAT THAT IS RESISTANT TO FISH OIL AND OTHER ANIMAL AND VEGETABLE OILS, 60um MINIMUM TOTAL DRY-FILM THICKNESS.
17. THE TRAFFIC FACE OF RAILS SHALL BE SET IN LINE WITH THE EDGE OF PLINTH WITH THE FOLLOWING TOLERANCES:
(i) UPPER RAIL ± 25 mm
(ii) MIDDLE RAIL ± 3 mm
(iii) LOWER RAIL $- 25$ mm
(iv) TOWARDS TRAFFIC -VE AWAY FROM TRAFFIC)
18. CONNECTION DETAILS OF STEEL PARAPET TO ROADSIDE BARRIER SHALL BE IN ACCORDANCE WITH HYD GUIDELINES NO-HD/GN/10.

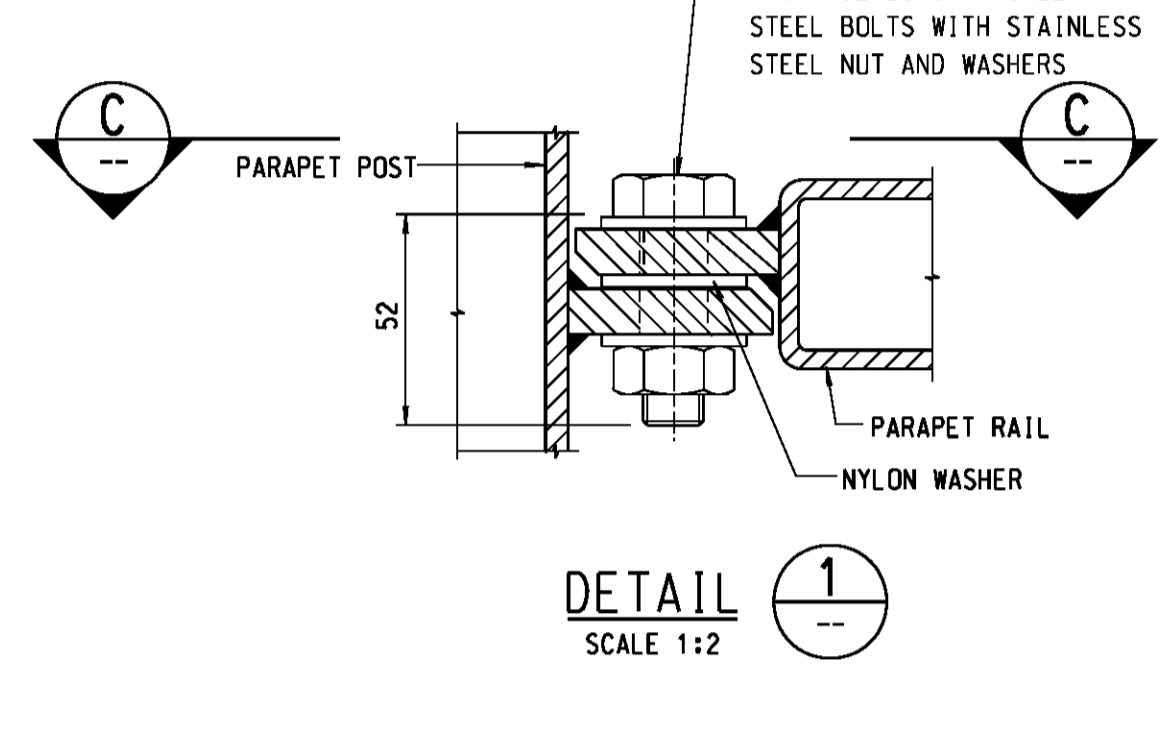
- NOTES:
- DIMENSIONS ARE GIVEN IN MILLIMETRES.
 - ALL STEELWORK SHALL BE HOT ROLLED OR COLD FORMED SECTIONS COMPLYING WITH BS4.
 - ALL STEELWORK SHALL BE GRADE S275J2H OR S275J2 TO BS EN 10210-2 OR BS EN 10219-2 AS APPROPRIATE.
 - ALL STEELWORK SHALL BE HOT DIP GALVANIZED TO BS EN ISO 1461 OR EQUIVALENT.
 - WELDING OF STEEL SHALL BE IN ACCORDANCE WITH BS EN 1011-1 AND BS EN 1011-2 AND ELECTRODES SHALL BE IN ACCORDANCE WITH BS EN 499.
 - WELDING SYMBOLS ARE IN ACCORDANCE WITH BS4999.
 - WELDS ARE 6mm CONTINUOUS FILLET WELDS UNLESS OTHERWISE SPECIFIED.
 - STAINLESS STEEL HOLDING DOWN BOLTS AND NUTS SHALL BE GRADE A4-80 TO BS EN ISO 3506-1 AND BS EN ISO 3506-2 WITH COMPATIBLE STAINLESS STEEL WASHERS. GRADE A2-70 MAY BE USED IN NON-MARINE ENVIRONMENT WHERE SPECIFIED IN THE CONTRACT.
 - STAINLESS STEEL BOLTS AND NUTS USED AT THE RAIL BOLTED JOINTS SHALL BE GRADE A2-70 TO BS EN ISO 3506-1 AND BS EN ISO 3506-2 WITH COMPATIBLE STAINLESS STEEL WASHER.
 - A NYLON OR OTHER APPROVED PLASTIC WASHER SHALL BE PROVIDED AT EVERY INTERFACE BETWEEN STAINLESS STEEL AND GALVANIZED STEEL.
 - FASTENERS OTHER THAN STAINLESS STEEL MATERIALS SHALL BE CADMIUM OR ZINC ELECTROPLATED, HOT-DIP GALVANIZED, OR SHERARDISED TO THE APPROPRIATE BRITISH STANDARDS.
 - PARAPET POSTS SHALL BE FIXED VERTICALLY AND BASE PLATES SHALL BE BOLTED DOWN TIGHTLY WITH LEVELS ADJUSTED BY STEEL SHIMS PRIOR TO GROUTING.
 - RAIL EXPANSION JOINTS SHALL BE PROVIDED AT ALL STRUCTURE MOVEMENT JOINTS.
 - PARAPET RAILS SHALL BE CONTINUOUS OVER AT LEAST TWO POSTS. MAXIMUM RAIL LENGTH SHALL BE 12000. MAXIMUM POST SPACING SHALL BE 3000.
 - BEDDING SHALL BE CEMENT / SAND GROUT WITH MIN. COMPRESSIVE STRENGTH OF 40N/mm².



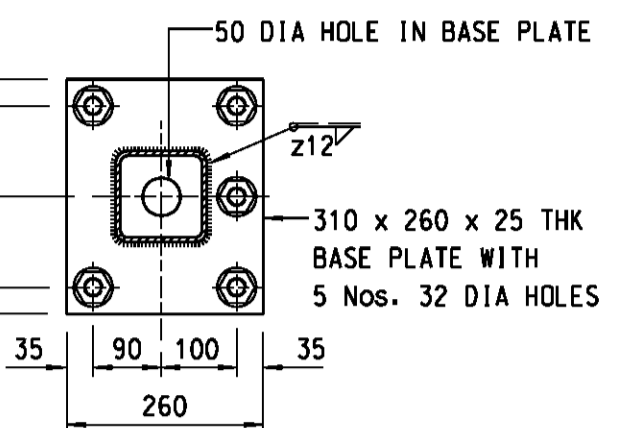
SECTION A
SCALE 1:10



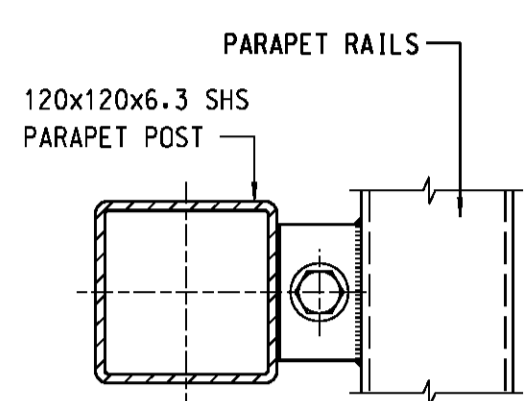
DETAIL 1 FOR SLOPING RAIL
SCALE 1:2



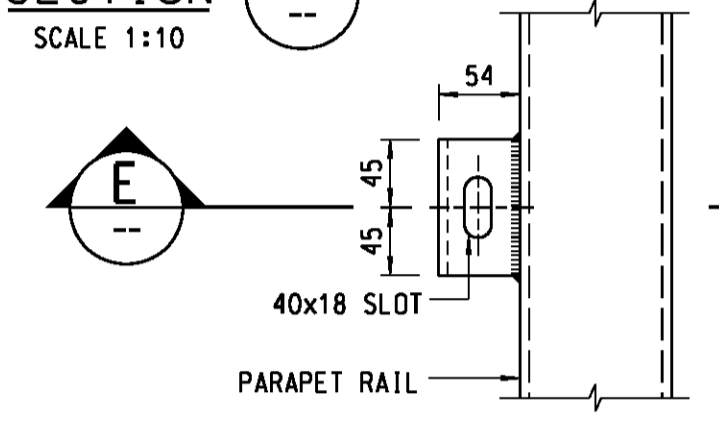
DETAIL 1
SCALE 1:2



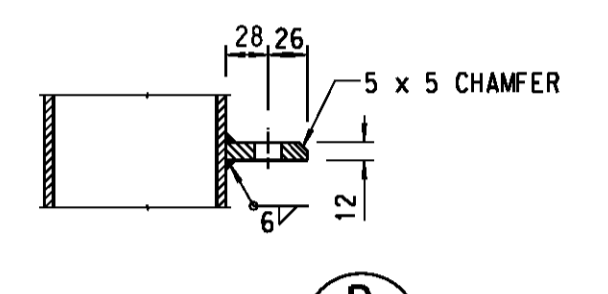
SECTION B
SCALE 1:10



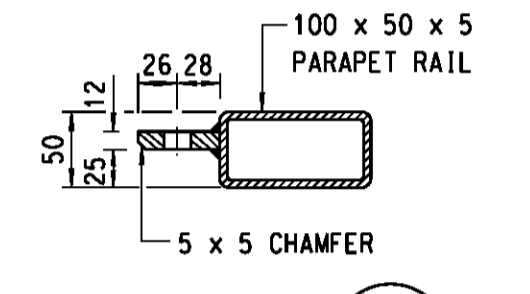
SECTION C
SCALE 1:5



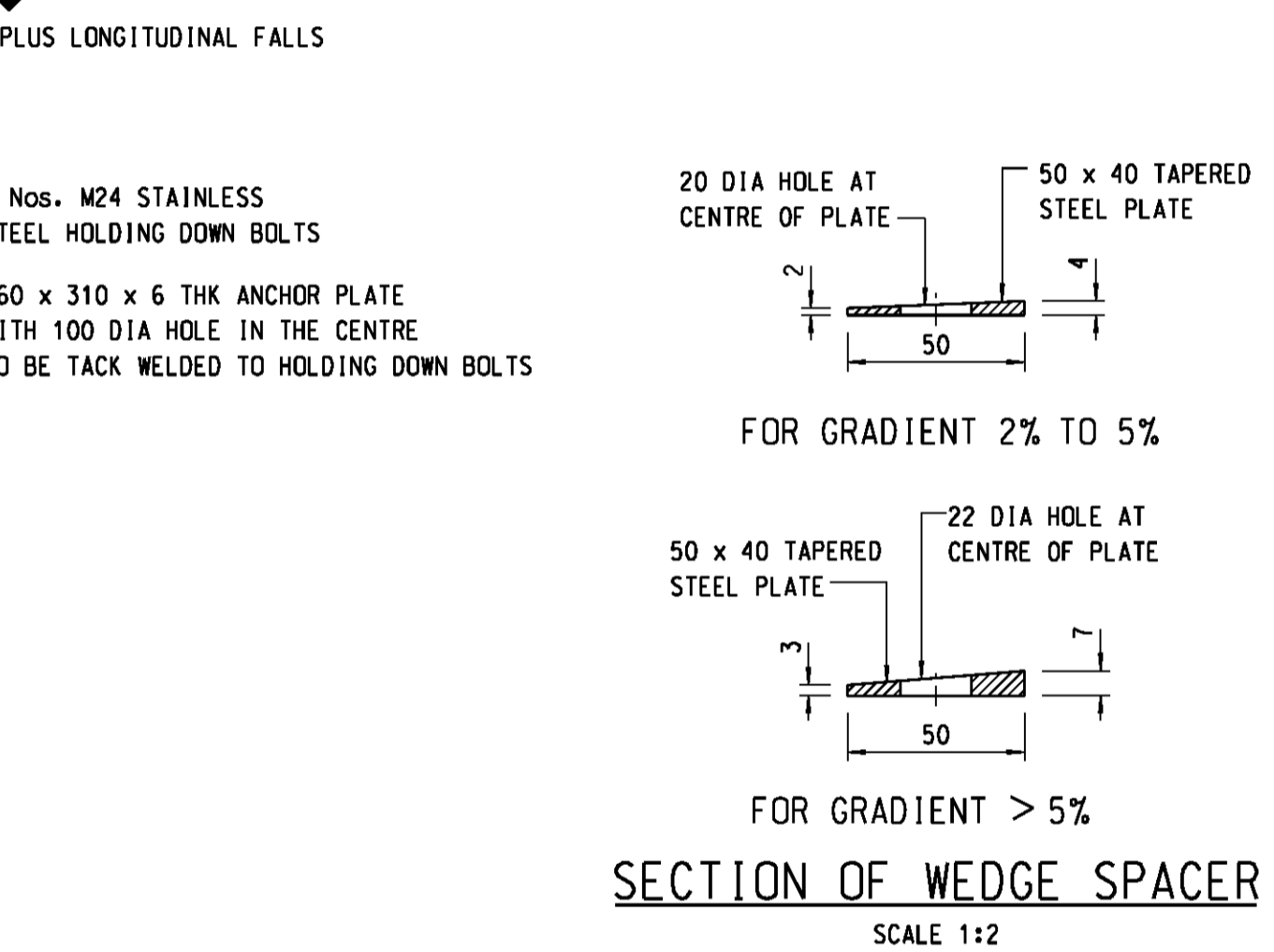
DETAILS OF RAIL IN SECTION C
SCALE 1:5



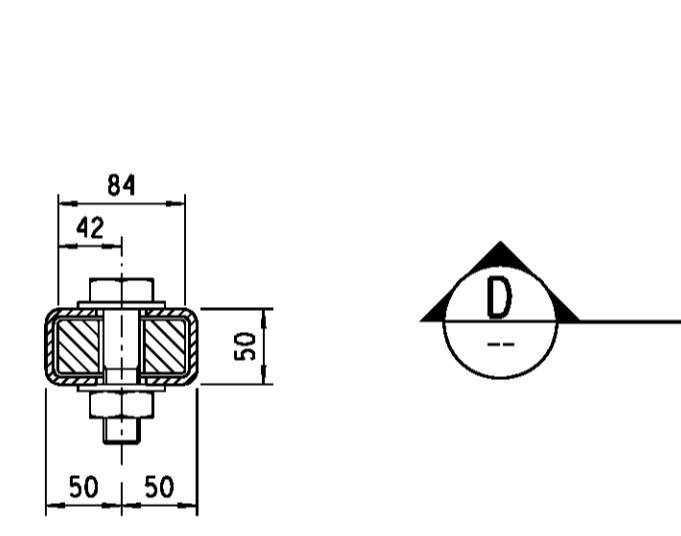
SECTION D
SCALE 1:5



SECTION E
SCALE 1:5

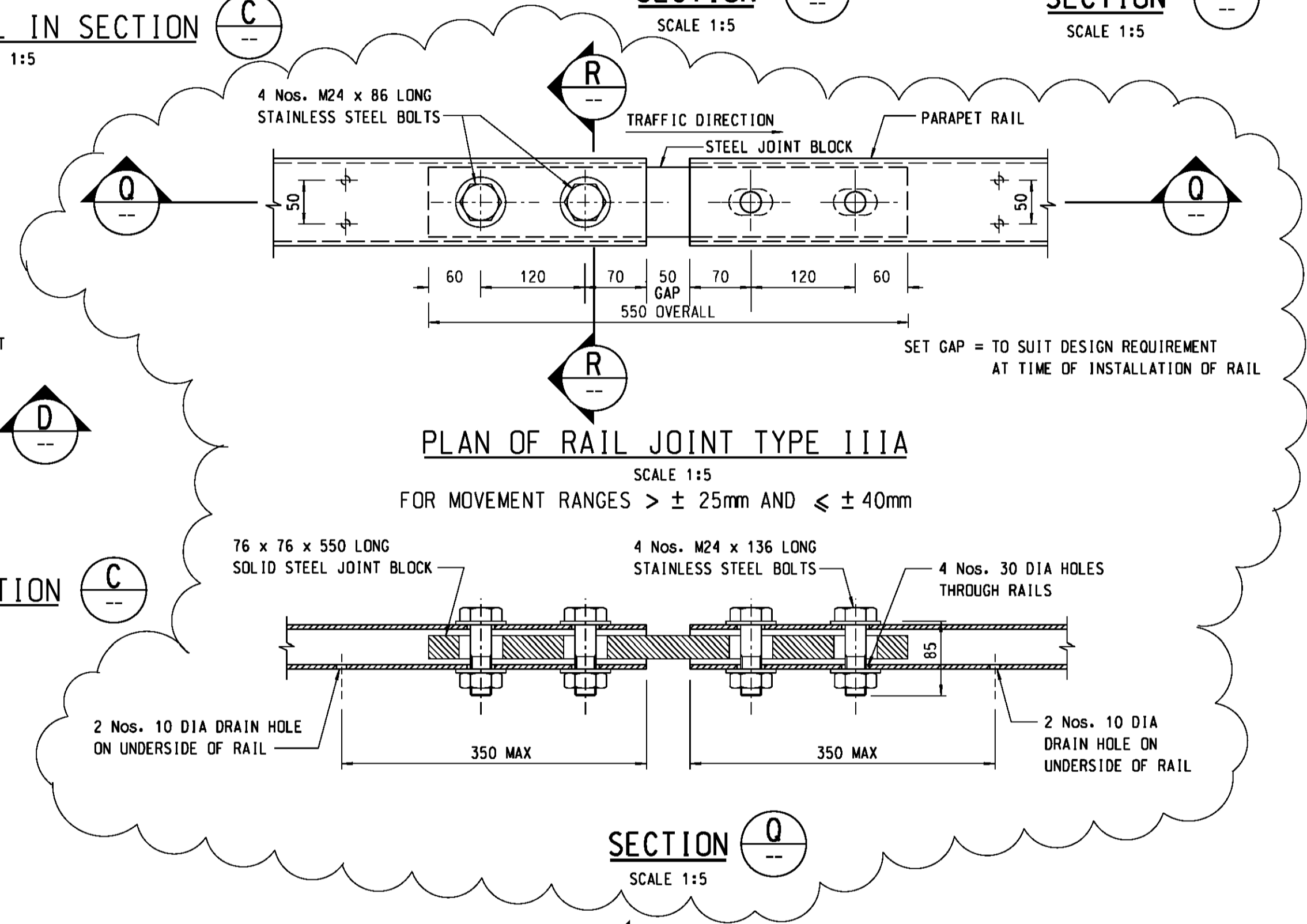


SECTION OF WEDGE SPACER
SCALE 1:2

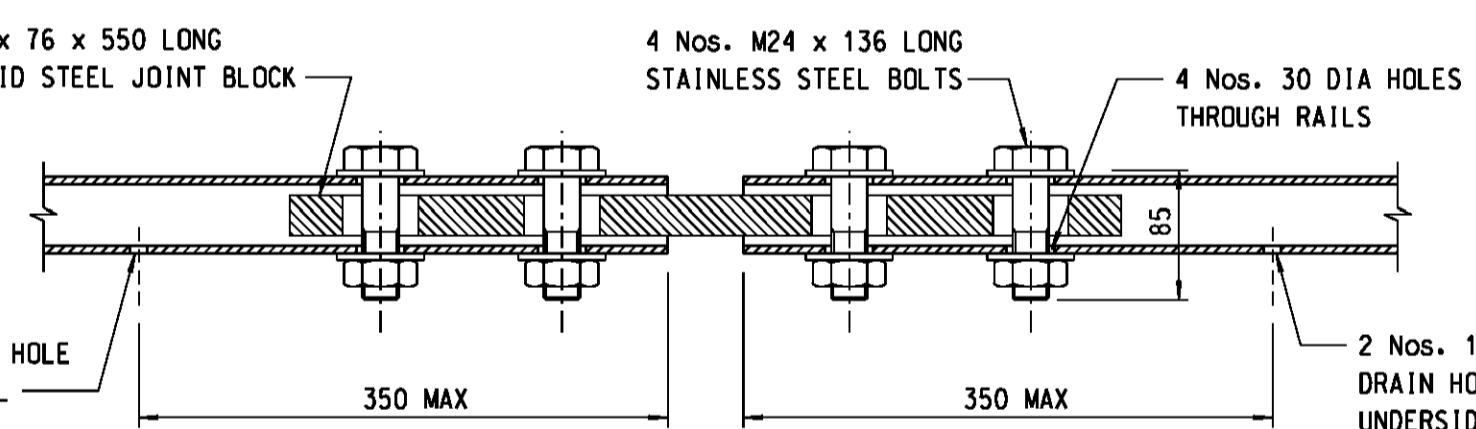


SECTION D
SCALE 1:5

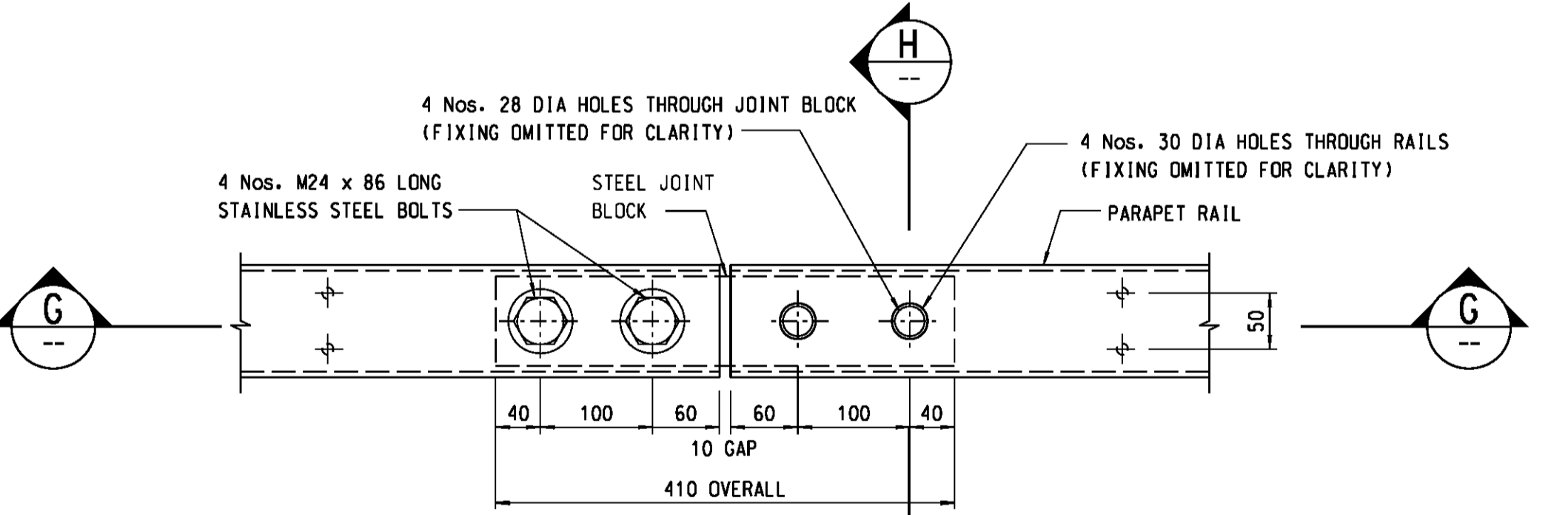
DETAILS OF POST IN SECTION C
SCALE 1:5



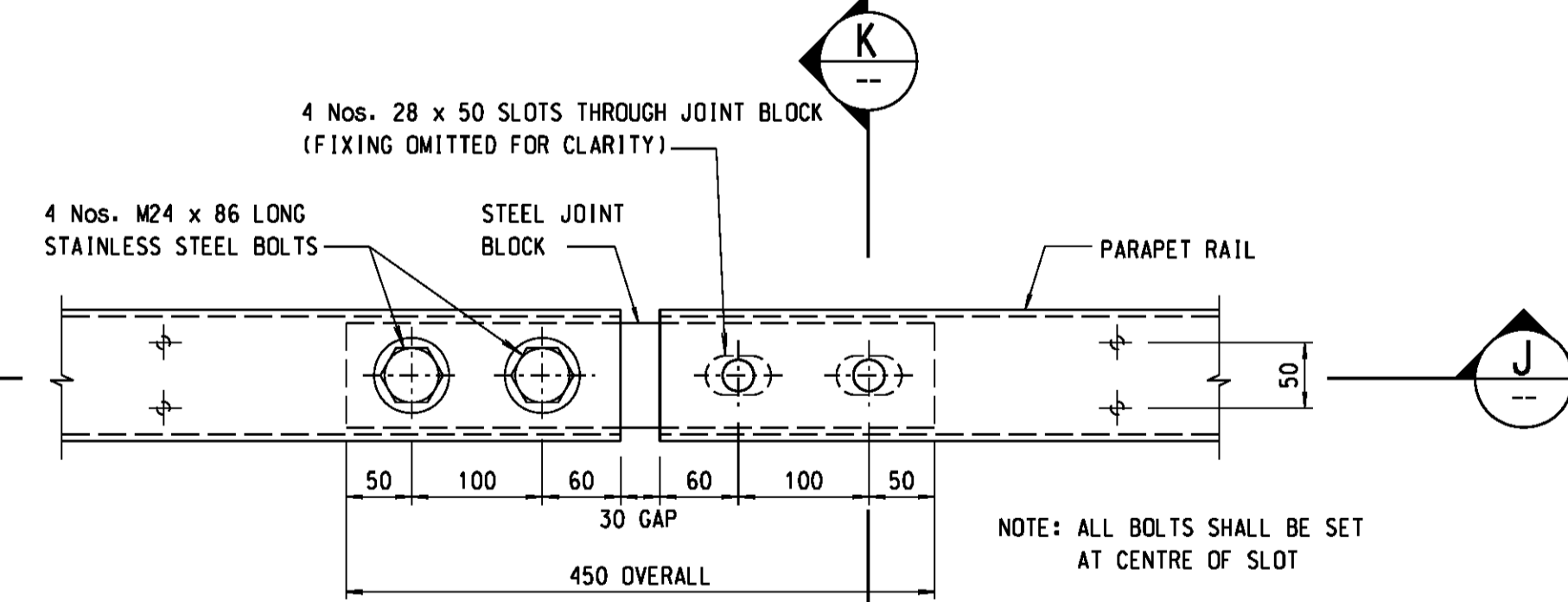
PLAN OF RAIL JOINT TYPE IIIA
SCALE 1:5
FOR MOVEMENT RANGES > ± 25mm AND ≤ ± 40mm



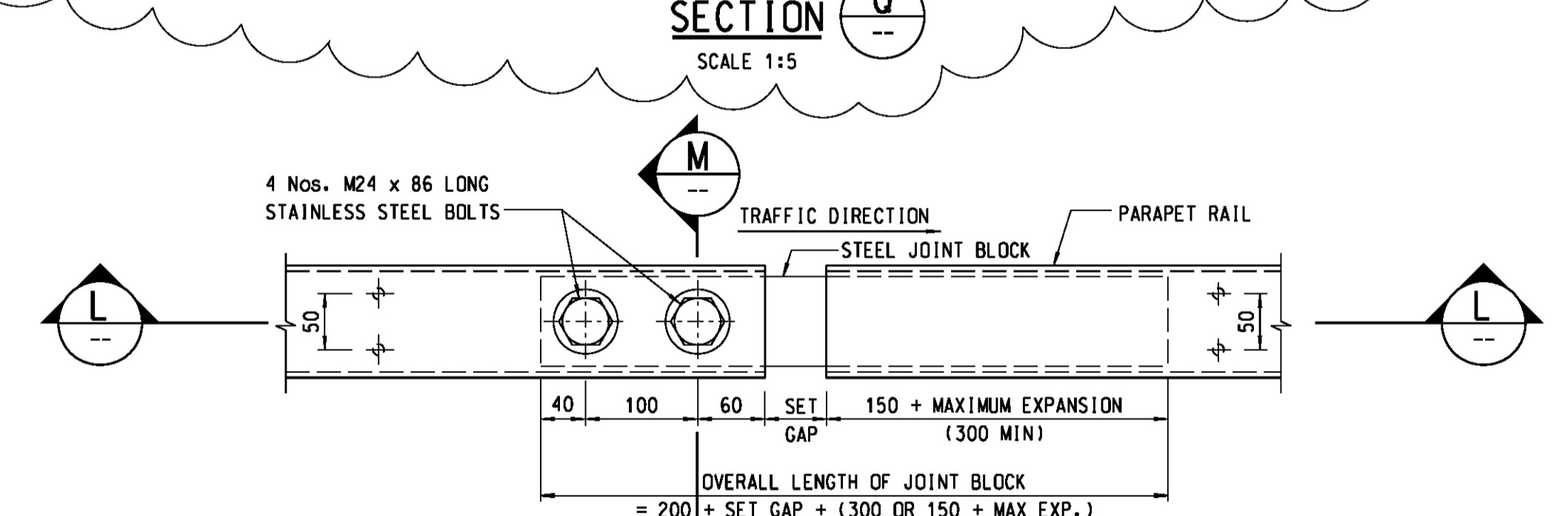
SECTION Q
SCALE 1:5



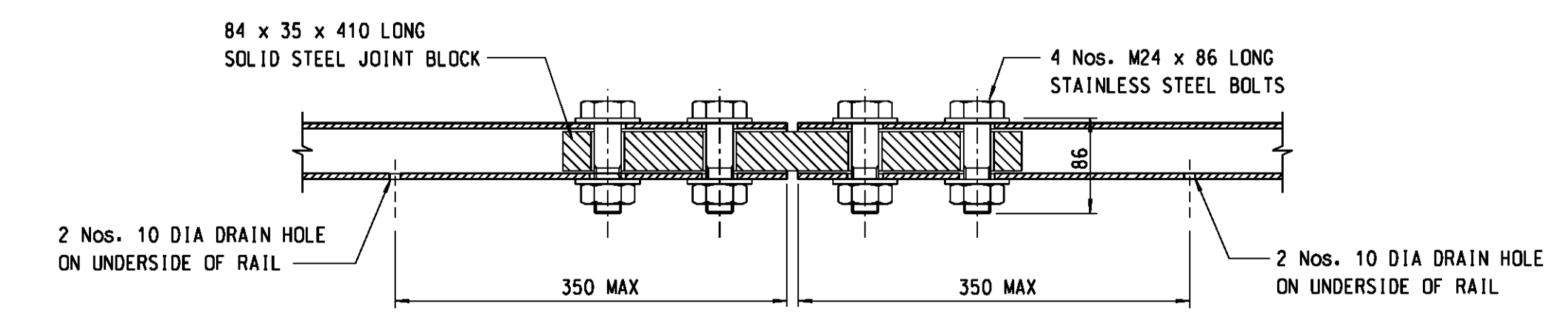
PLAN OF RAIL JOINT TYPE I
SCALE 1:5



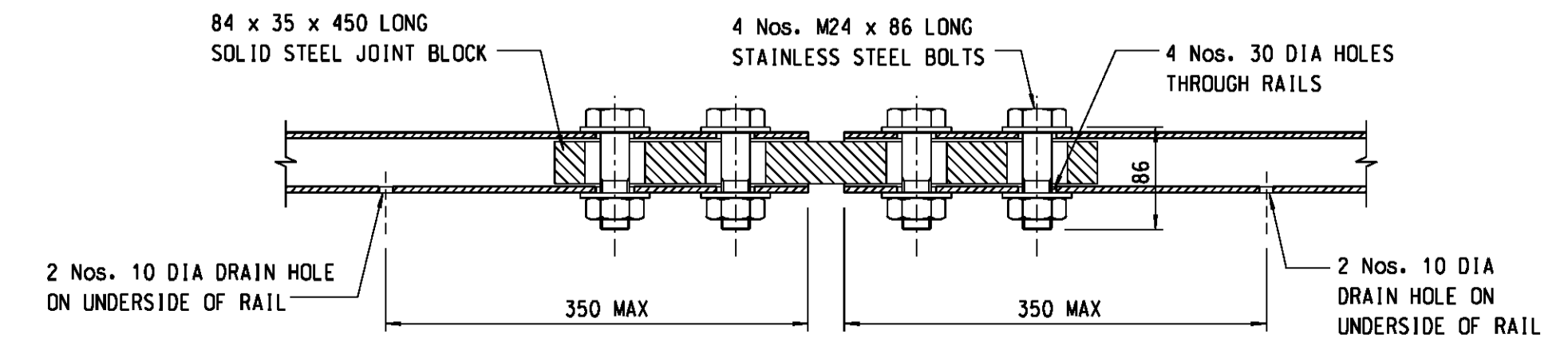
PLAN OF RAIL JOINT TYPE II
SCALE 1:5
FOR MOVEMENT RANGES UP TO AND INCLUDING ± 25 mm



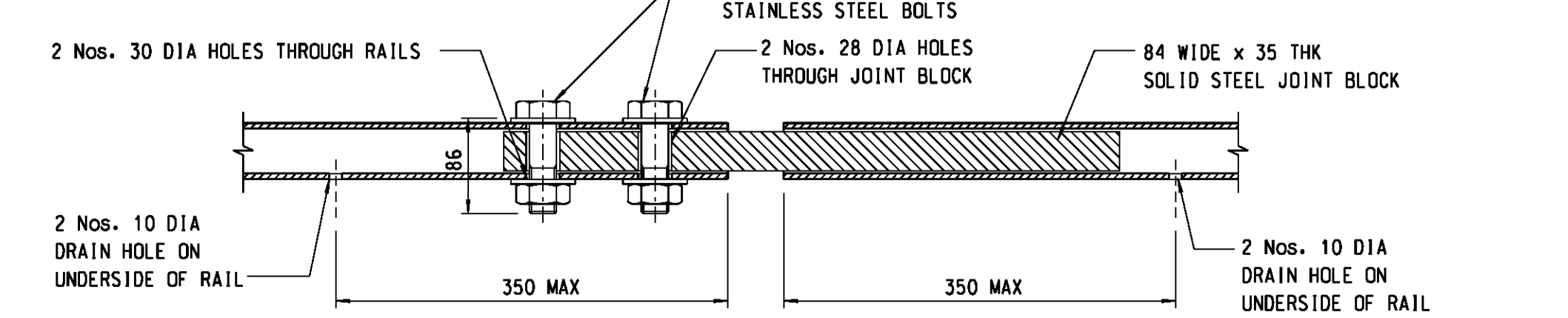
PLAN OF RAIL JOINT TYPE IIIB
SCALE 1:5
FOR MOVEMENT RANGES EXCEEDING ± 40mm



SECTION G
SCALE 1:5



SECTION J
SCALE 1:5



SECTION L
SCALE 1:5

no.	date	description	SIGNED	initial
B	08/07	CONNECTION DETAILS WITH W-BEAM DELETED. RAIL JOINT TYPE III CHANGED TO TYPES IIIA & IIIB. EXTRA END POST ADDED.	K.W. MO (E/P2-4)	
A	10/05	1. GENERAL AMENDMENTS 2. SAFETY FENCE CONNECTION REVISED	M.H. TAM (E/P2-4)	

REVISION				
no.	date	description	SIGNED	initial
			P. C. WONG	

approved: P. C. WONG, Chief Highway Engineer, date: FEB 02

contract no.
file no.
project no.
contract

drawing title
STEEL VEHICLE PARAPET

drawing no. **SSD141-B** scale **AS SHOWN**

office: **BRIDGES AND STRUCTURES DIVISION** 結構橋樑部
HIGHWAYS DEPARTMENT 路政署
HONG KONG 香港

0 10 20 30 40 50 mm
1:1 SCALE BAR

0 10 20 30 40 50 mm
1:1 SCALE BAR