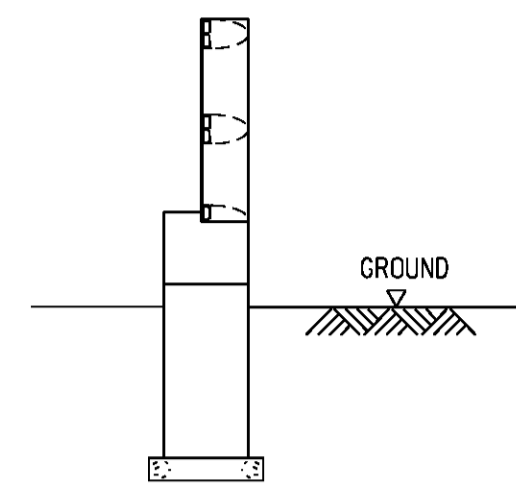
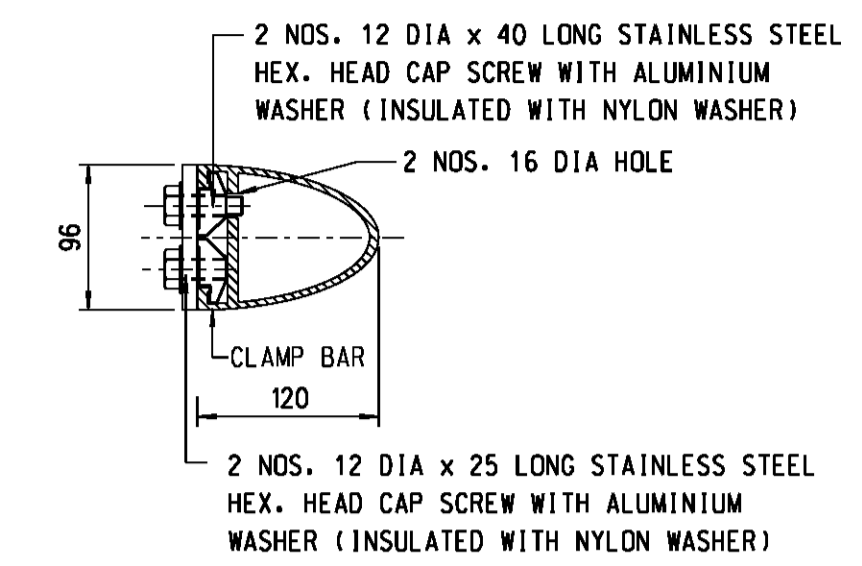


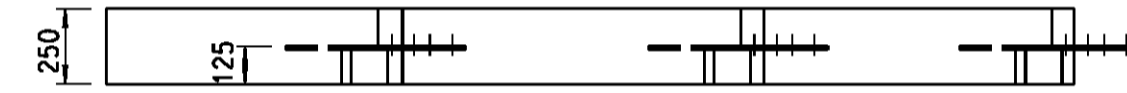
FRONT ELEVATION OF CONCRETE ANCHOR BLOCK
SCALE 1:25



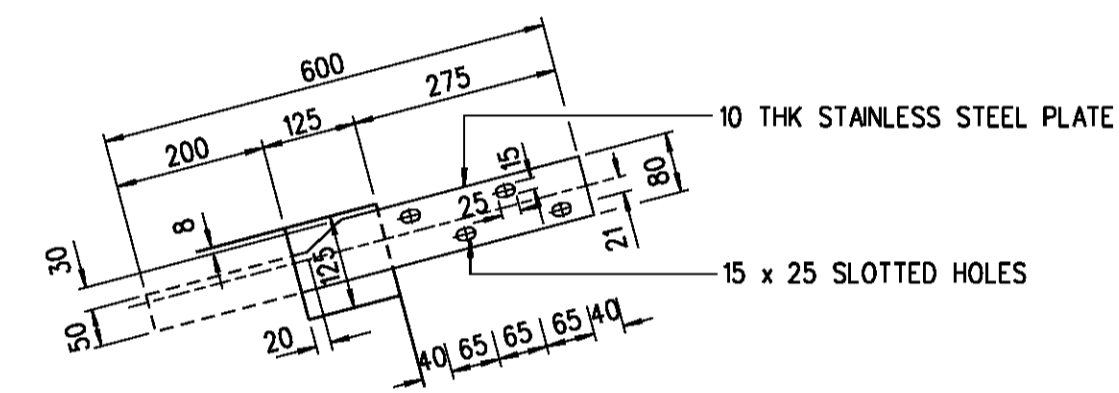
ELEVATION K
SCALE 1:25



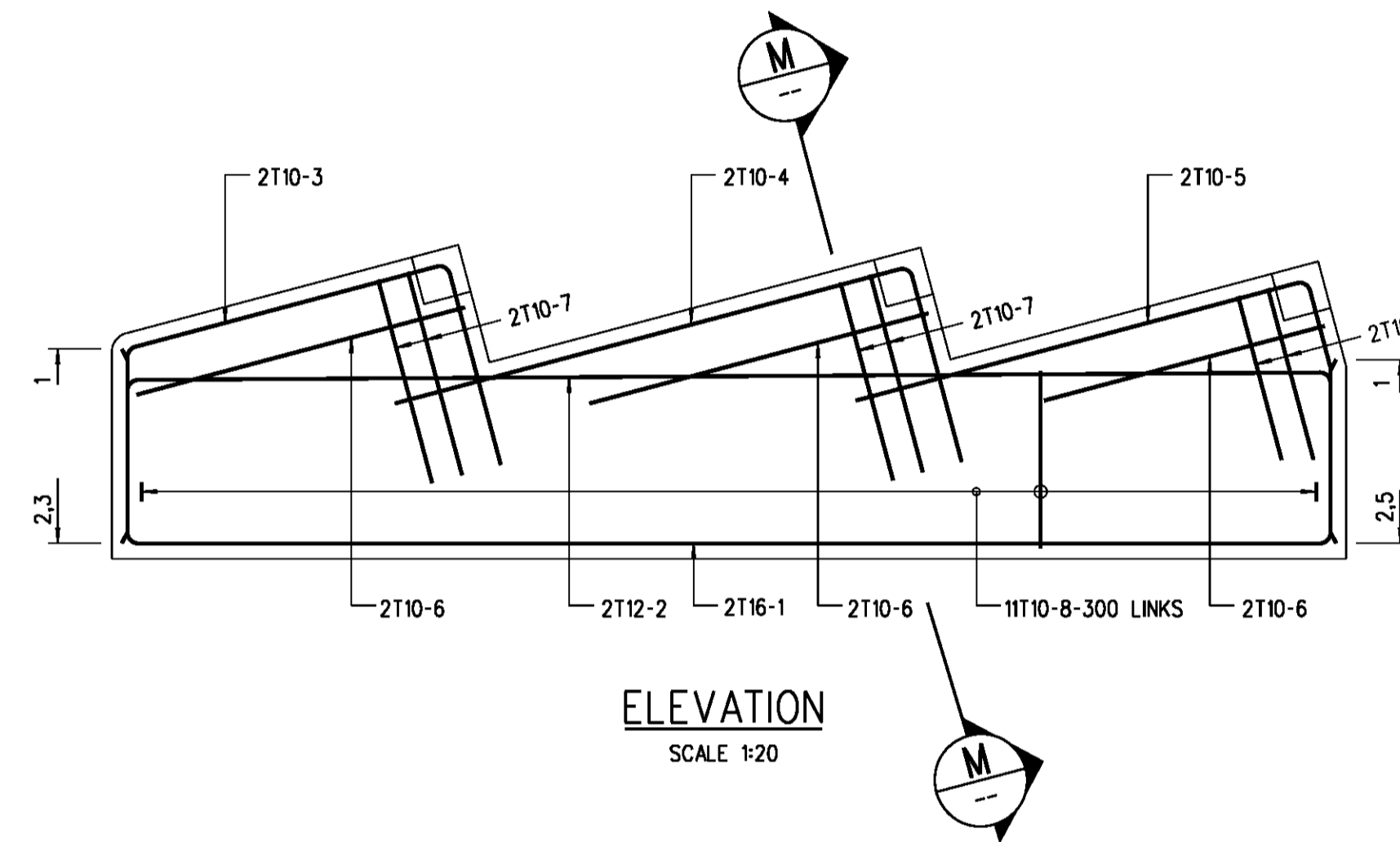
SECTION L
SCALE 1:5



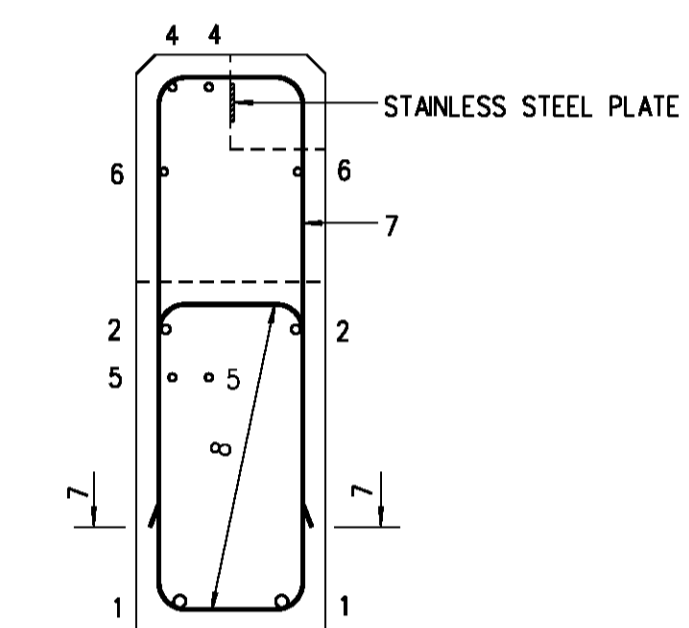
PLAN OF CONCRETE BLOCK
SCALE 1:25
RAILING OMITTED



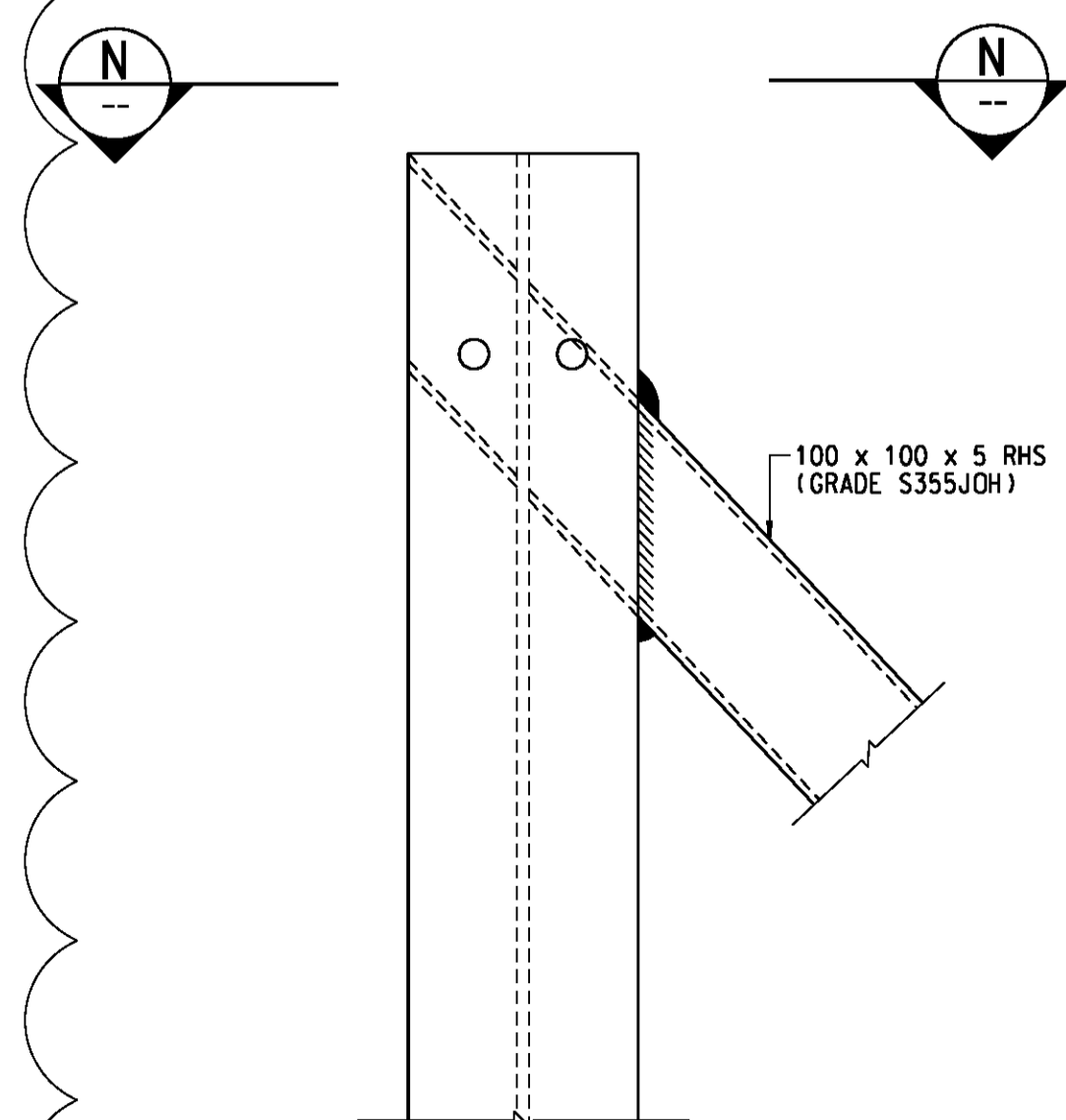
DETAIL 6
SCALE 1:0
RAILING OMITTED



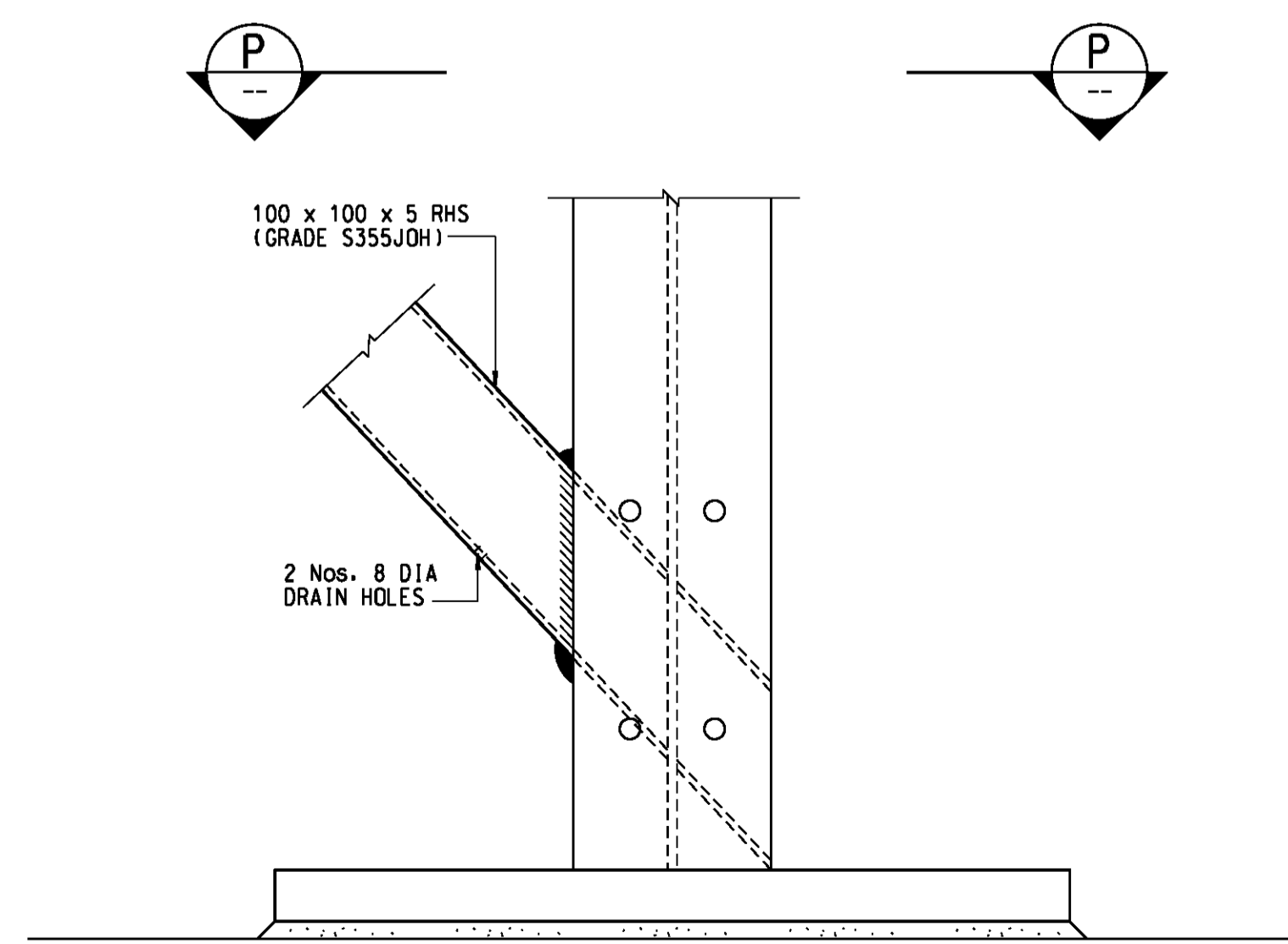
ELEVATION M
SCALE 1:20



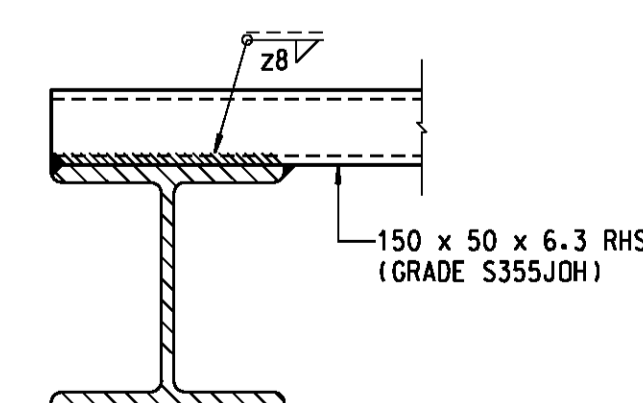
SECTION M
SCALE 1:0



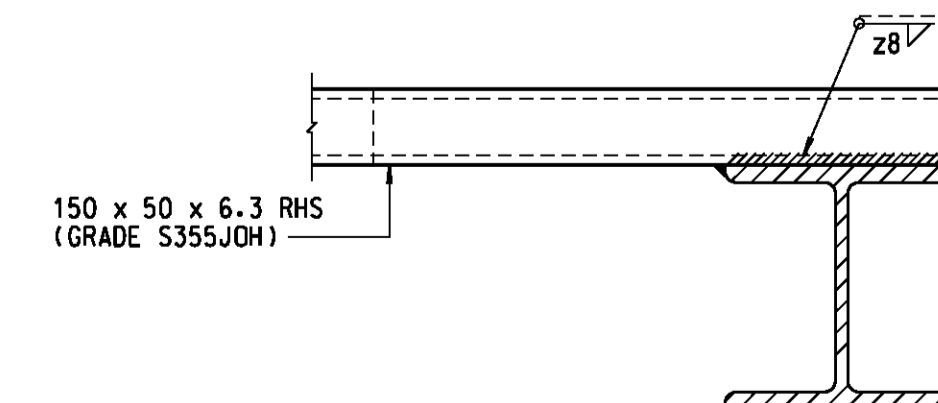
DETAIL 4
SCALE 1:5



DETAIL 5
SCALE 1:5



SECTION N
SCALE 1:5



SECTION P
SCALE 1:5

NOTES:

- FOR GENERAL NOTES, SEE SSD142(1).
- FOR CONNECTION BETWEEN SAFETY FENCE AND ALUMINIUM VEHICLE PARAPET, AN ARRANGEMENT SIMILAR TO DRAWING NO. TB-11C OF HO/GN/10 - GUIDELINES FOR DESIGN OF END-DETAILS OF THREE-BEAM BARRIER FENCE SHALL BE ADOPTED.
- WHERE NECESSARY, CRASH CUSHIONS SHALL BE PROVIDED IN FRONT OF THE TERMINAL OF PARAPETS IN ACCORDANCE WITH TRANSPORT PLANNING AND DESIGN MANUAL VOLUME 2 CHAPTER 3 PARAGRAPH 3.9.4.

A	08/07	END DETAIL WITH SAFETY FENCE CONNECTION DELETED	SIGNED K.W.MO (E/P2-41)
			SIGNED C.K.CHAN (SE/P2)

no.	date	description	initial
-----	------	-------------	---------

REVISION			
	name	signature	date
designed	M.H. TAM	SIGNED	OCT. 01
drawn	K.H. SO	SIGNED	OCT. 01
senior technical officer	K.K. LUK	SIGNED	NOV. 01
project engineer	M.H. TAM	SIGNED	JAN. 02
senior engineer	W.C. CHAN	SIGNED	FEB. 02

approved
SIGNED
P. C. WONG
Chief Highway Engineer
FEB. 02
date

contract no.

file no.

project no.

contract

drawing title

ALUMINIUM VEHICLE PARAPET

SHEET 2 OF 2

drawing no. SSD142(2)-A
scale AS SHOWN

office BRIDGES AND STRUCTURES DIVISION
結構標部及

HIGHWAYS DEPARTMENT
路政署
HONG KONG 香港