

UTLC Paper No. 1/2005

Recessed Kerblines

I Purpose of the Paper

The purpose of this paper is to solicit members' endorsement to the proposed mitigation measures to deal with recessed kerblines.

II Background

Recessed kerblines to accommodate utility covers straddling over carriageway and footpath is often found in the public roads. The abrupt change in level without warning to pedestrians had resulted in public complaints and claims against Government due to injuries thereat.

III The Problem

A survey in Hong Kong Island alone reveals that there are about 500 problematic locations. The size of the problem in the whole territory is therefore substantial.

The recessed kerblines vary in all kinds of shapes and sizes to accommodate various utility manhole covers. Although the recessed kerblines can provide a physical demarcation for local narrowing of footpaths, pedestrians may not be alerted of the recessed kerblines and may step into the recessed area and injure themselves. Other problems caused by the recessed kerblines include local ponding and mosquito breeding.

The creation of the recessed kerblines is usually due to site constraints or poor planning during the construction of utilities and its associated manholes. It may also be caused by re-alignment of kerblines without relocating the affected manholes.

The recessed locations may have been considered minor in nature and thus not recorded on the as-constructed drawings.

Some Utility Undertakers (UU) may have even altered the kerblines to suit their newly constructed manhole covers without informing or seeking the approval from Highways Department.

IV Proposals

In order to mitigate the potential hazards of recessed kerblines, HyD proposes the following:

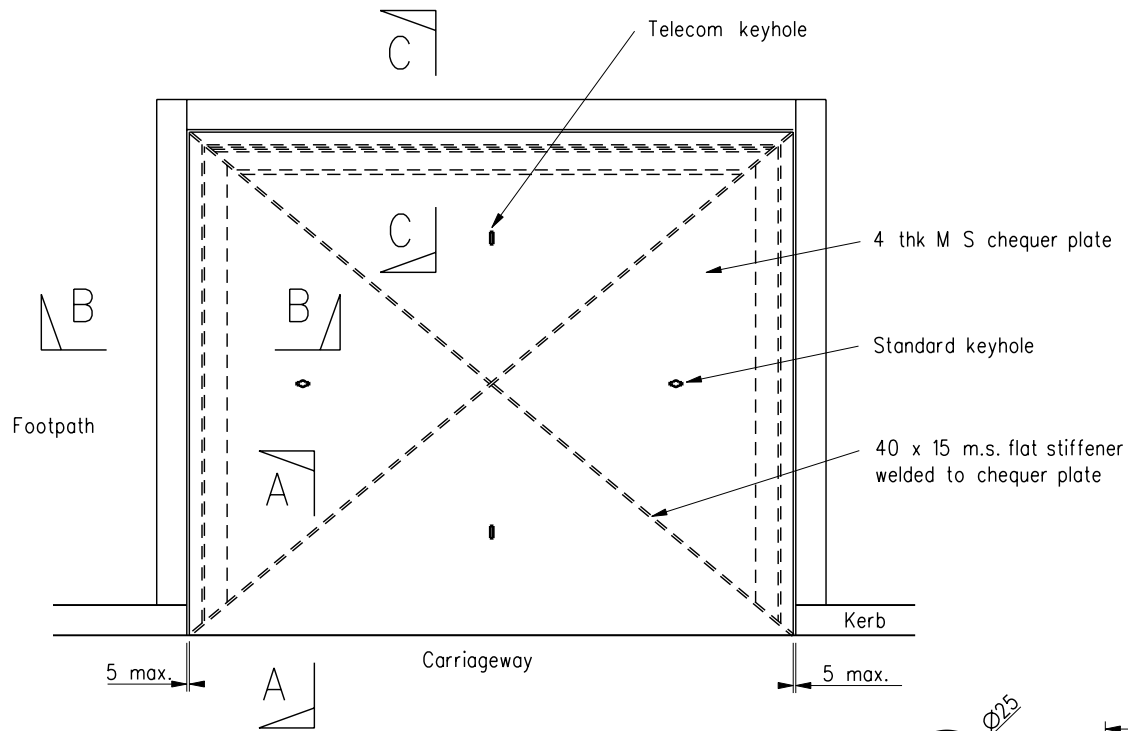
Short-term measures

- a. For minor recessed kerblines, the affected kerblines could be re-aligned by the HyD Regional offices to avoid the encroaching manhole cover.
- b. HyD should install a cover on the recessed kerblines (for details please refer to attached drawing no. HRDMISCEL-SK0056A). For particular recessed locations that are impractical to install covers, e.g. recess too shallow, too small or in odd shapes, alternative measures (such as laying precast concrete paving units with weak cement mortar bedding on top of the manhole cover) may be implemented to the discretion of HyD.

Long-term measures

- a. UUs should not construct manhole covers straddling over carriageway and footpath unless with prior approval from HyD.
- b. UUs concerned should make use of every opportunity to relocate existing manholes with cover straddling over carriageway and footpath as far as practicable with the aim of restoring a uniform footpath width.
- c. HyD should promulgate a guidance note or technical circular to provide rules and guidelines on locating utility manhole covers so as to prevent future encroachment of utility manhole covers into footpaths.

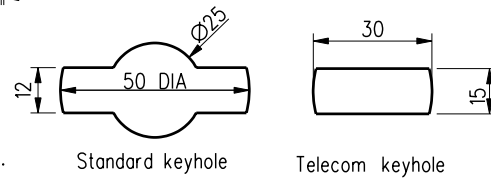
July 2005
Research & Development Division
Highways Department



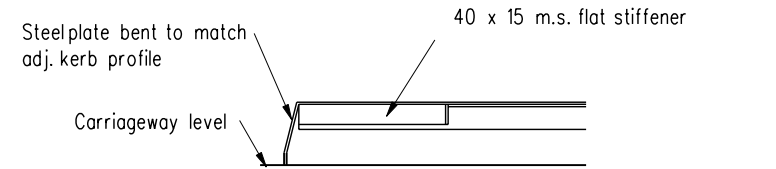
PLAN
(welds not shown)

Notes:

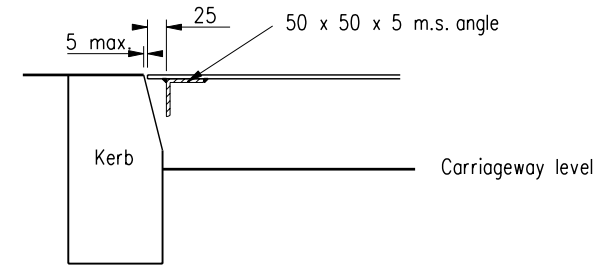
1. All dimensions are in millimetres.
2. All weld connections to be 3mm intermittent fillet weld of 20mm length at 150 spacing.
3. All mild steel (MS) to be painted in black color with undercoat and primer.
4. All unspecified dimensions to be determined on site to suit actual constraints.
5. A small portion of c/w adj. to the kerb may be replaced with concrete as directed by the Engineer if it is too loose to fix the stud bolts.
6. Under circumstances where the identification label of the utility cover is enclosed, an identification plate provided by the concerned UU should be welded on the proposed cover.
7. Colour and type of painting may be decided by the engineer responsible for the design and maintenance of individual covers to cope with specific site requirements.



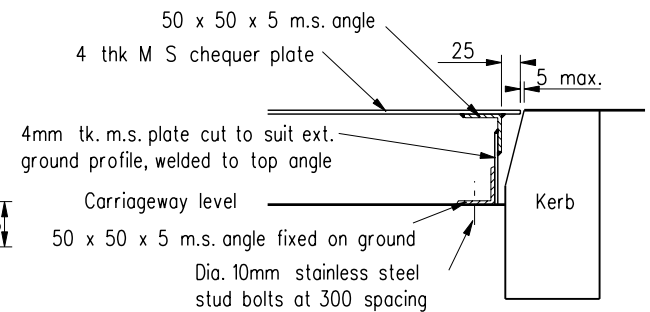
KEY HOLE



A - A
(welds not shown)



B - B



C - C

A	Notes 6 & 7 added		Oct 05
	NEW ISSUE		Sep 05
REF.	REVISION	SIGNATURE	DATE

COVER FOR RECESSED KERBLINE

HIGHWAYS DEPARTMENT

REFERENCE	DRAWING No.	CAD
SCALE	HRDMISCEL-SK0056A	
NOT TO SCALE		