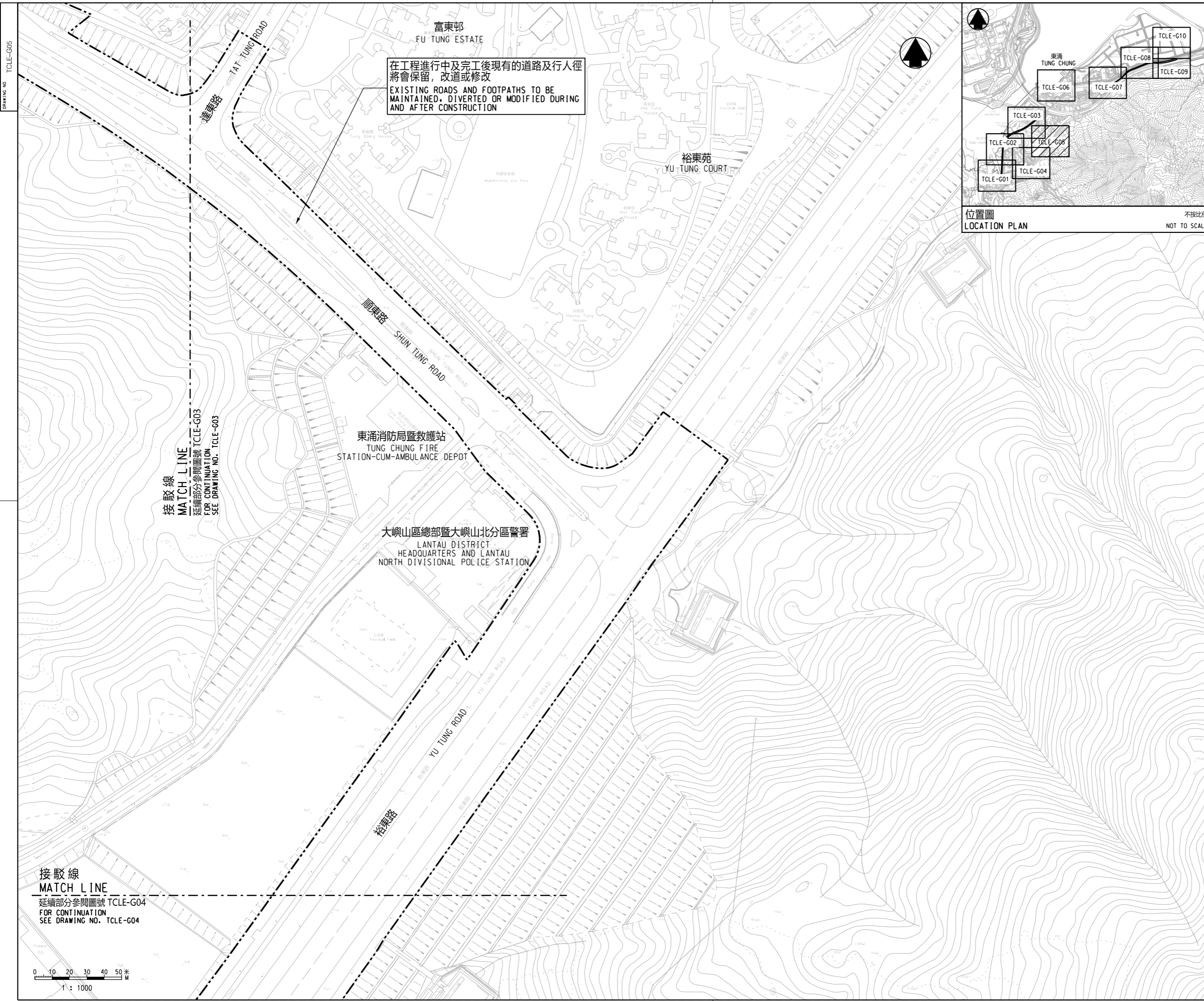


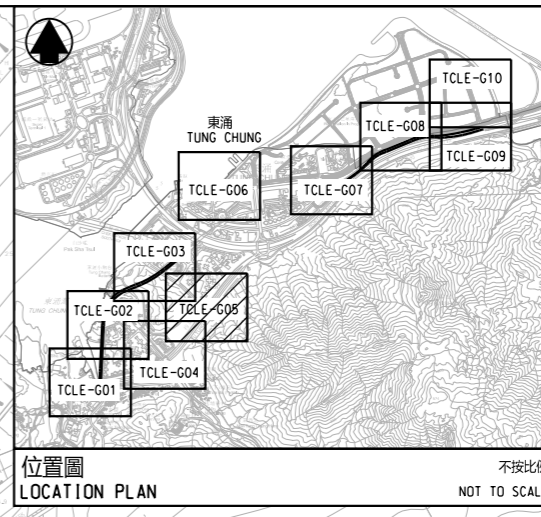
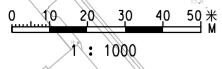
DRAWING NO. TCLE-G05



在工程進行中及完工後現有的道路及行人徑將會保留，改道或修改
 EXISTING ROADS AND FOOTPATHS TO BE MAINTAINED, DIVERTED OR MODIFIED DURING AND AFTER CONSTRUCTION

接駁線
 MATCH LINE
 延續部分參閱圖號 TCLE-G03
 FOR CONTINUATION
 SEE DRAWING NO. TCLE-G03

接駁線
 MATCH LINE
 延續部分參閱圖號 TCLE-G04
 FOR CONTINUATION
 SEE DRAWING NO. TCLE-G04



位置圖
 LOCATION PLAN
 不按比例
 NOT TO SCALE

- 圖例 LEGEND :**
- 方案界線
BOUNDARY OF THE SCHEME
 - - - 擬建的鐵路車站及其他鐵路設施(地下)
PROPOSED RAILWAY STATION AND OTHER RAILWAY FACILITIES (UNDERGROUND)
 - 擬建的車站/車站入口/通風大樓/通風井/其他鐵路設施或永久建築物
PROPOSED RAILWAY STATION/STATION ENTRANCES/VENTILATION BUILDINGS/VENTILATION SHAFTS/OTHER RAILWAY FACILITIES OR PERMANENT STRUCTURES
 - - - 現有的車站及其他鐵路設施
EXISTING STATION AND OTHER RAILWAY FACILITIES
 - ~ 擬採用鑽挖或挖掘或鑽桿的鐵路設施或隧道(地下)
PROPOSED RAILWAY FACILITIES/TUNNELS BY BORED/MINED/DRILL AND BLAST METHOD (UNDERGROUND)
 - ~ 擬採用明挖回填法興建的鐵路設施或隧道(地下)
PROPOSED RAILWAY FACILITIES/TUNNELS BY CUT-AND-COVER METHOD (UNDERGROUND)
 - ▨ 擬設置地盤設施的臨時施工區
PROPOSED TEMPORARY WORKS AREA FOR SITE FACILITIES
 - ~ 可能在其上進行填海工程或其他工程的政府前濱或海床
GOVERNMENT FORESHORE OR SEABED OVER OR UPON WHICH RECLAMATION OR OTHER WORKS MAY BE CARRIED OUT
 - ~ 擬進行修改工程的現有東涌線
PROPOSED MODIFICATION WORKS OF THE EXISTING TUNG CHUNG LINE
 - ~ 現有的行人天橋斜道將被拆除
EXISTING FOOTBRIDGE RAMP TO BE DEMOLISHED

一般說明 GENERAL NOTES :

- 有關一般說明參閱圖號TCLE-G01。
FOR GENERAL NOTES, REFER TO DRAWING NO. TCLE-G01.

修訂表
TABLE OF AMENDMENTS

REV	DATE	BY	APP	DESCRIPTION

SIGNED
 魏漢華 NGAI HON WAH
 批准發出
APPROVED FOR ISSUE
 路政署
鐵路拓展處處長(2)
GOVERNMENT ENGINEER/
RAILWAY DEVELOPMENT (2)
HIGHWAYS DEPARTMENT
 15 NOV 2021
 發出日期 DATE OF ISSUE

圖則名稱 DRAWING TITLE
**鐵路條例(第519章)
 東涌線延線
 總體規劃圖則** 10頁的第5頁
 RAILWAYS ORDINANCE (CHAPTER 519)
 TUNG CHUNG LINE EXTENSION
 GENERAL LAYOUT PLAN SHEET 5 OF 10

圖號 DRAWING NO. TCLE-G05
 比例 SCALE 1:1000 (A1) 或如圖示 AS SHOWN