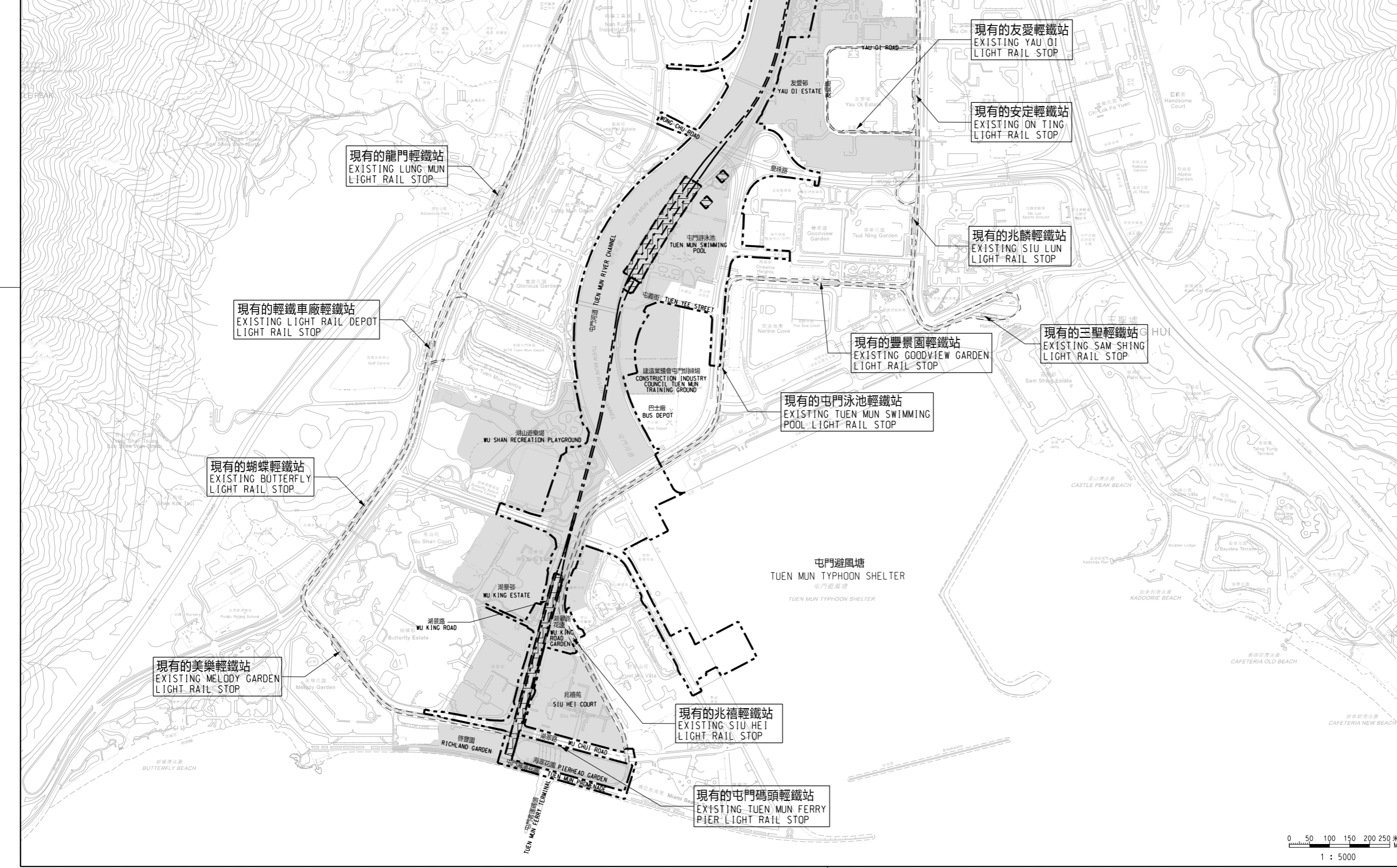


位置圖  
LOCATION PLAN

不按比例  
NOT TO SCALE



**圖例 LEGEND:**

- 方案界線  
BOUNDARY OF THE SCHEME
- 擬建的鐵路車站及相關鐵路設施  
PROPOSED RAILWAY STATION AND ASSOCIATED RAILWAY FACILITIES
- 擬建築工程 (包括在方案界線以外進行的建築工程) 與方案或路綫的營運或維修不相容, 可行使建築管制或建築工程展開的控制的土地範圍  
AREA OF LAND ON WHICH CONTROL OF BUILDING PLANS OR COMMENCEMENT OF BUILDING WORKS (INCLUDING BUILDING WORKS OUTSIDE THE BOUNDARIES OF THE SCHEME) WHICH ARE INCOMPATIBLE WITH THE SCHEME OR THE OPERATION OR MAINTENANCE OF THE RAILWAY MAY BE REQUIRED
- 現有的鐵路路軌中綫  
EXISTING RAILWAY TRACK CENTRE LINE
- 擬建的鐵路路軌中綫  
PROPOSED RAILWAY TRACK CENTRE LINE
- 現有的港鐵車站及輕鐵設施  
EXISTING MTR STATION AND LIGHT RAIL FACILITIES

修訂表  
TABLE OF AMENDMENTS

修改 REV	日期 DATE	繪圖 BY	核對 SUB	負責 APP	說明 DESCRIPTION

SIGNED  
林雨舟 LAM YU CHAU  
獲准發出  
APPROVED FOR ISSUE  
31 DEC 2021  
發出日期 DATE OF ISSUE

圖則名稱 DRAWING TITLE  
鐵路條例 (第519章)  
屯門南延綫  
控制建築圖則及工程展開圖則  
RAILWAYS ORDINANCE (CHAPTER 519)  
TUEN MUN SOUTH EXTENSION  
CONTROL OF BUILDING PLANS AND  
COMMENCEMENT OF WORK PLAN

圖號 DRAWING NO.  
TMSE-P01  
比例 SCALE  
1:5000 (A1)  
或如圖示  
AS SHOWN

香港特別行政區政府  
THE GOVERNMENT OF THE HONG KONG  
SPECIAL ADMINISTRATIVE REGION  
路政署  
HIGHWAYS DEPARTMENT  
鐵路拓展處  
RAILWAY DEVELOPMENT OFFICE

