

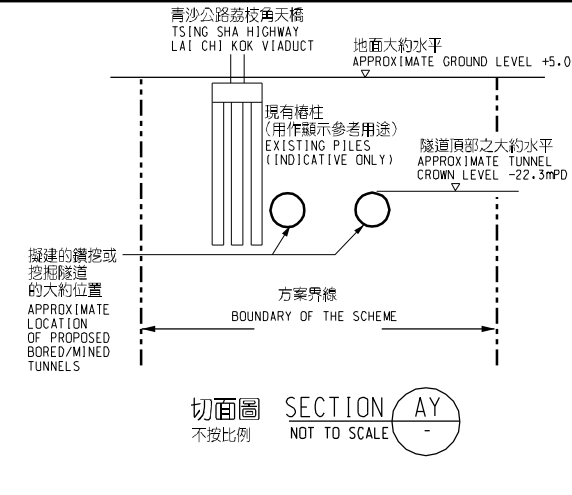
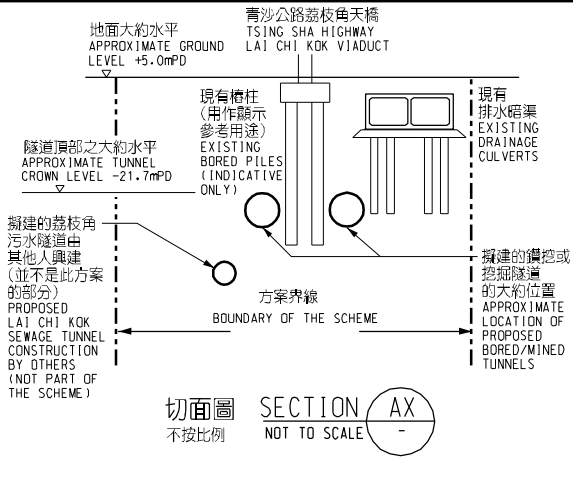
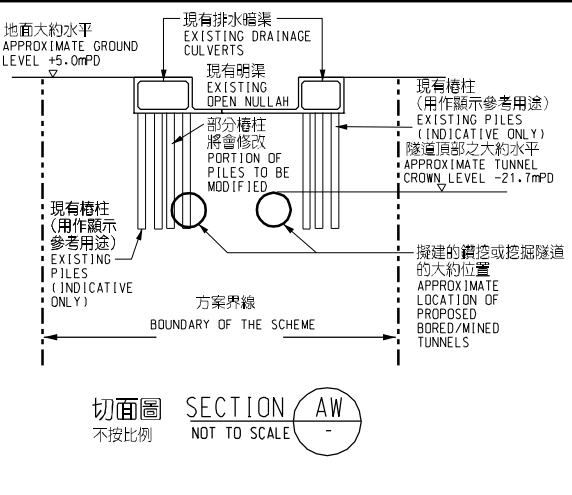
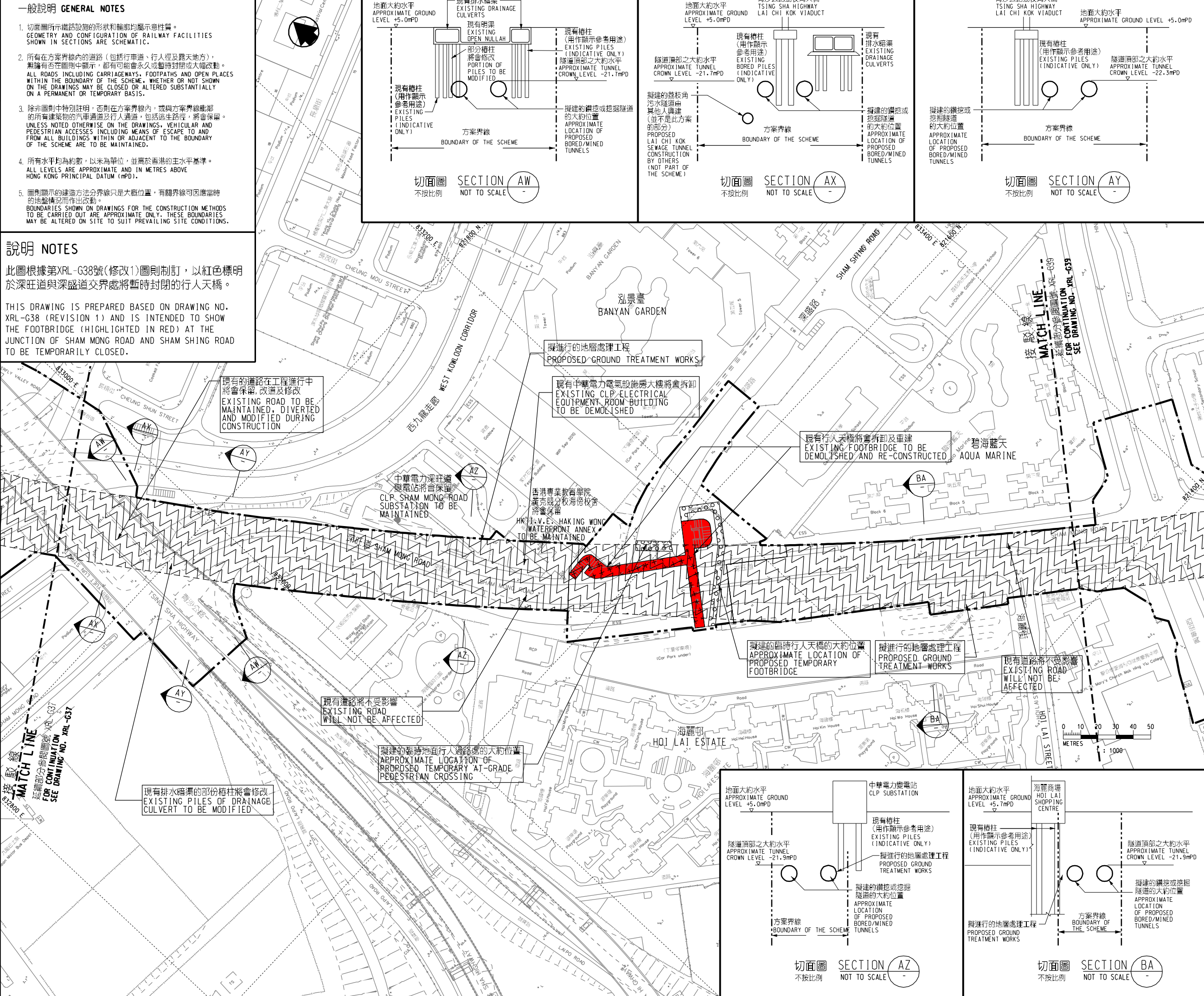
一般說明 GENERAL NOTES

- 1. 切面圖所示鐵路設施的形狀和輪廓均屬示意性質。 GEOMETRY AND CONFIGURATION OF RAILWAY FACILITIES SHOWN IN SECTIONS ARE SCHEMATIC.
2. 所有在方案界線內的道路(包括行車道、行人徑及露天地方)無論有否在圖則中顯示,都有可能永久或暫時封閉或大幅改動。 ALL ROADS INCLUDING CARRIAGEWAYS, FOOTPATHS AND OPEN PLACES WITHIN THE BOUNDARY OF THE SCHEME, WHETHER OR NOT SHOWN ON THE DRAWINGS MAY BE CLOSED OR ALTERED SUBSTANTIALLY ON A PERMANENT OR TEMPORARY BASIS.
3. 除非圖則中特別註明,否則在方案界線內,或與方案界線毗鄰的所有建築物的汽車通道及行人通道,包括逃生路徑,將會保留。 UNLESS NOTED OTHERWISE ON THE DRAWINGS, VEHICULAR AND PEDESTRIAN ACCESSES INCLUDING MEANS OF ESCAPE TO AND FROM ALL BUILDINGS WITHIN OR ADJACENT TO THE BOUNDARY OF THE SCHEME ARE TO BE MAINTAINED.
4. 所有水平均為約數,以米為單位,並高於香港的主水平基準。 ALL LEVELS ARE APPROXIMATE AND IN METRES ABOVE HONG KONG PRINCIPAL DATUM (MPD).
5. 圖則顯示的建造方法分界線只是大概位置,有關界線可因應當時的地盤情況而作出改動。 BOUNDARIES SHOWN ON DRAWINGS FOR THE CONSTRUCTION METHODS TO BE CARRIED OUT ARE APPROXIMATE ONLY. THESE BOUNDARIES MAY BE ALTERED ON SITE TO SUIT PREVAILING SITE CONDITIONS.

說明 NOTES

此圖根據第XRL-G38號(修改1)圖則制訂,以紅色標明於深旺道與深盛道交界處將暫時封閉的行人天橋。

THIS DRAWING IS PREPARED BASED ON DRAWING NO. XRL-G38 (REVISION 1) AND IS INTENDED TO SHOW THE FOOTBRIDGE (HIGHLIGHTED IN RED) AT THE JUNCTION OF SHAM MONG ROAD AND SHAM SHING ROAD TO BE TEMPORARILY CLOSED.



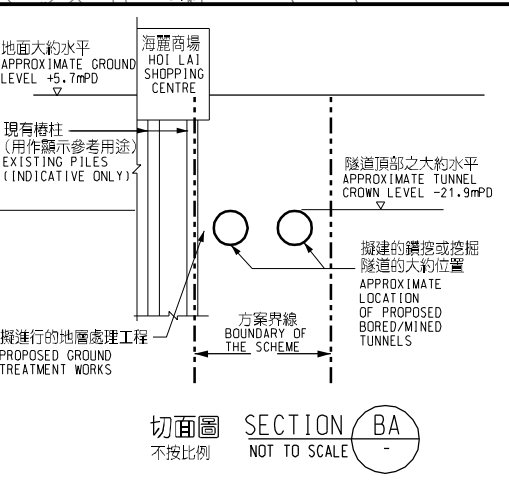
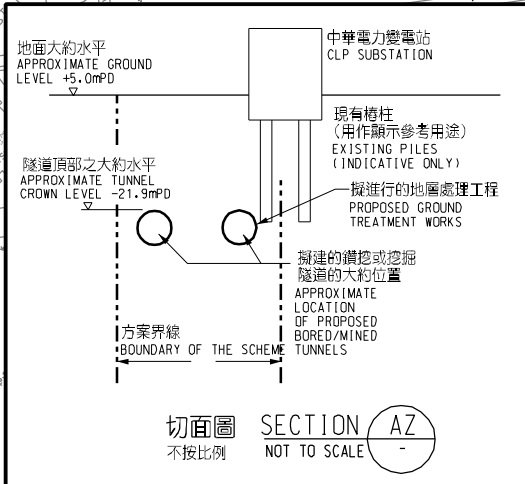
圖例 LEGEND. Includes symbols for boundary of the scheme, proposed station and other railway facilities, proposed bored/mined/drill and blast tunnel, etc.

Table with 5 columns: REV, DATE, BY, SUB, APP, DESCRIPTION. Includes 'SIGNED' section with name and title.

30/11/2010. 發出日期 DATE OF ISSUE. 圖則名稱 DRAWING TITLE: 鐵路條例(第519章)...

鐵路條例(第519章) 廣深港高速鐵路香港段 暫時封閉於深旺道與深盛道交界處的行人天橋

圖號 DRAWING NO. XRL/G38/0006/1. 比例 SCALE 1:1000 (A1). 香港特別行政區政府 THE GOVERNMENT OF THE HONG KONG SPECIAL ADMINISTRATIVE REGION. 路政署 HIGHWAYS DEPARTMENT. 鐵路拓展處 RAILWAY DEVELOPMENT OFFICE.



Vertical text on the left edge: User: BentleyV85... Files: BentleyV85... Project: BentleyV85... Date: 10/12/10...