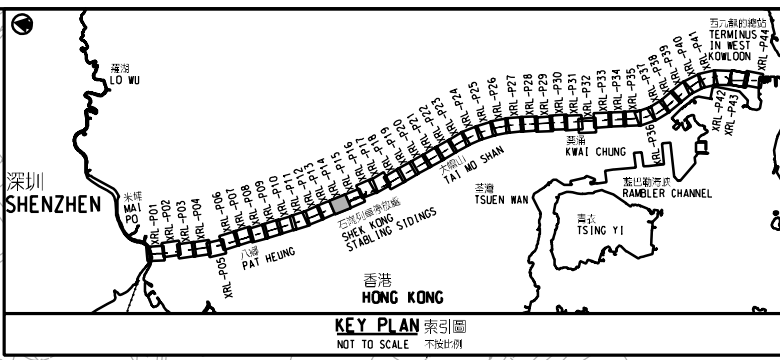
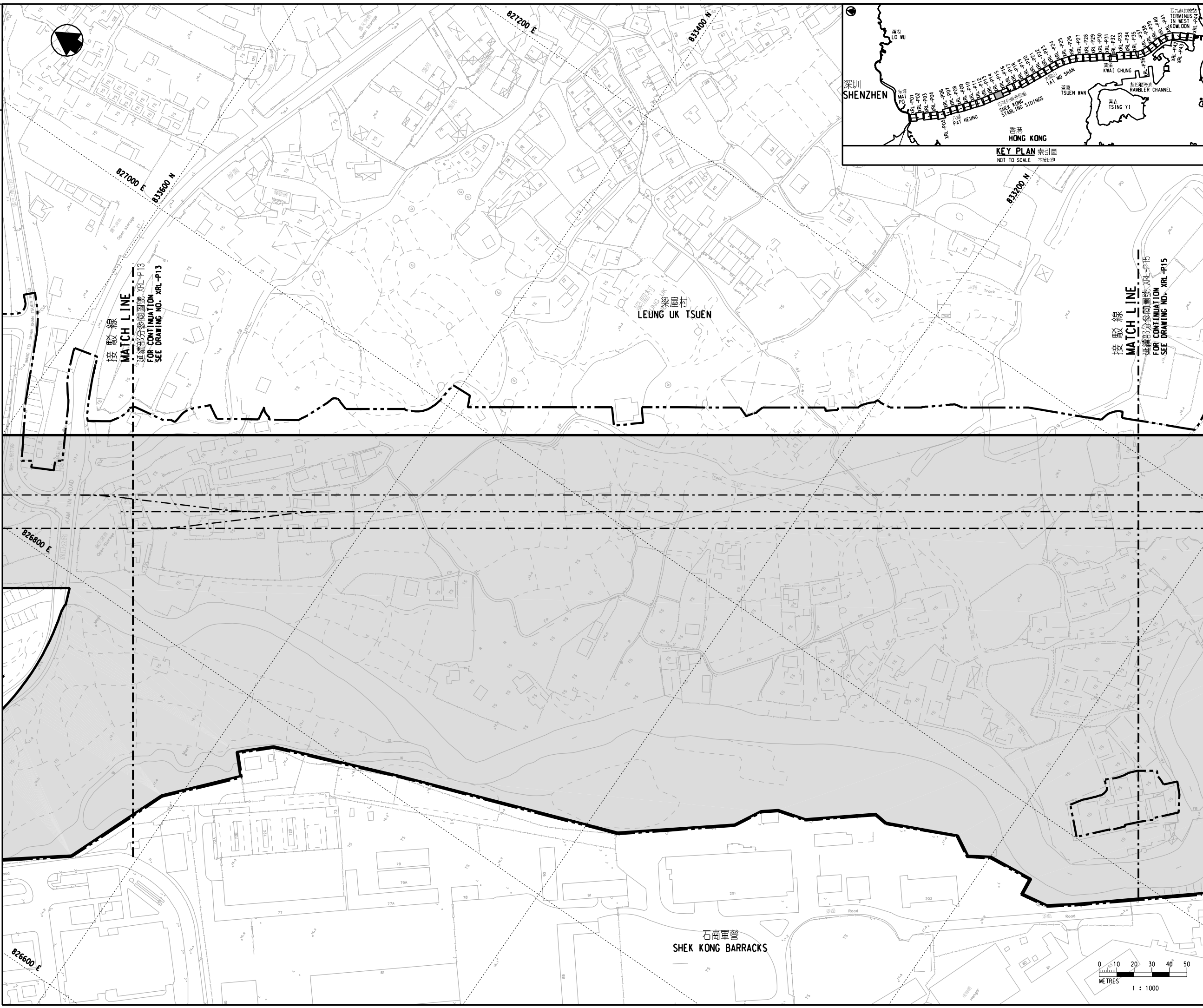


DRAWING NO. XRL - P14



- 圖例 LEGEND**
- 方案界線  
BOUNDARY OF THE SCHEME
  - 擬建的路軌中線  
PROPOSED RAILWAY TRACK CENTRE LINE
  - 擬建的鐵路車站  
PROPOSED RAILWAY STATION
  - 就建築工程 (包括在方案界線以外進行的建築工程) 與方案或鐵路的管理或維修不相容, 可行使建築圖則或建築工程展開的控制的土地範圍  
AREA OF LAND ON WHICH CONTROL OF BUILDING PLANS OR COMMENCEMENT OF BUILDING WORKS (INCLUDING BUILDING WORKS OUTSIDE THE BOUNDARIES OF THE SCHEME) WHICH ARE INCOMPATIBLE WITH THE SCHEME OR THE OPERATION OR MAINTENANCE OF THE RAILWAY MAY BE REQUIRED

修訂表  
TABLE OF AMENDMENTS

修訂 REV	日期 DATE	繪圖 BY	核對 SUB	批准 APP	說明 DESCRIPTION

獲准發出  
APPROVED FOR ISSUE

路政署  
鐵路拓展處處長(2)  
GOVERNMENT ENGINEER/  
RAILWAY DEVELOPMENT  
HIGHWAYS DEPARTMENT

發出日期 DATE OF ISSUE

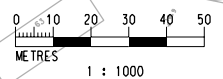
圖則名稱 DRAWING TITLE  
 廣深港高速鐵路香港段  
 鐵路條例(第519章)  
 控制建築圖則及工程展開圖則  
 44頁的第14頁  
 HONG KONG SECTION OF  
 GUANGZHOU - SHENZHEN - HONG KONG  
 EXPRESS RAIL LINK  
 RAILWAYS ORDINANCE (CHAPTER 519)  
 CONTROL OF BUILDING PLANS AND  
 COMMENCEMENT OF WORK PLAN SHEET 14 OF 44

圖號 DRAWING NO.  
**XRL - P14**

比例 SCALE  
1:1000 (A1)  
或如顯示  
OR  
AS SHOWN

香港特別行政區政府  
THE GOVERNMENT OF THE HONG KONG  
SPECIAL ADMINISTRATIVE REGION

路政署  
HIGHWAYS DEPARTMENT  
鐵路拓展處  
RAILWAY DEVELOPMENT OFFICE



石崗軍營  
SHEK KONG BARRACKS

梁屋村  
LEUNG UK TSUEN

接駁線  
MATCH LINE  
FOR CONTINUATION  
SEE DRAWING NO. XRL-P13

接駁線  
MATCH LINE  
FOR CONTINUATION  
SEE DRAWING NO. XRL-P15