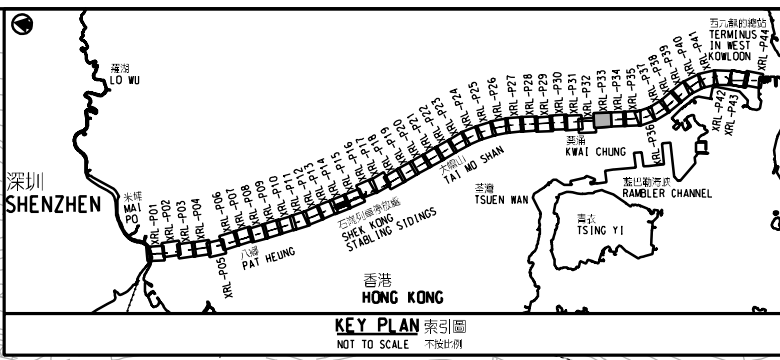
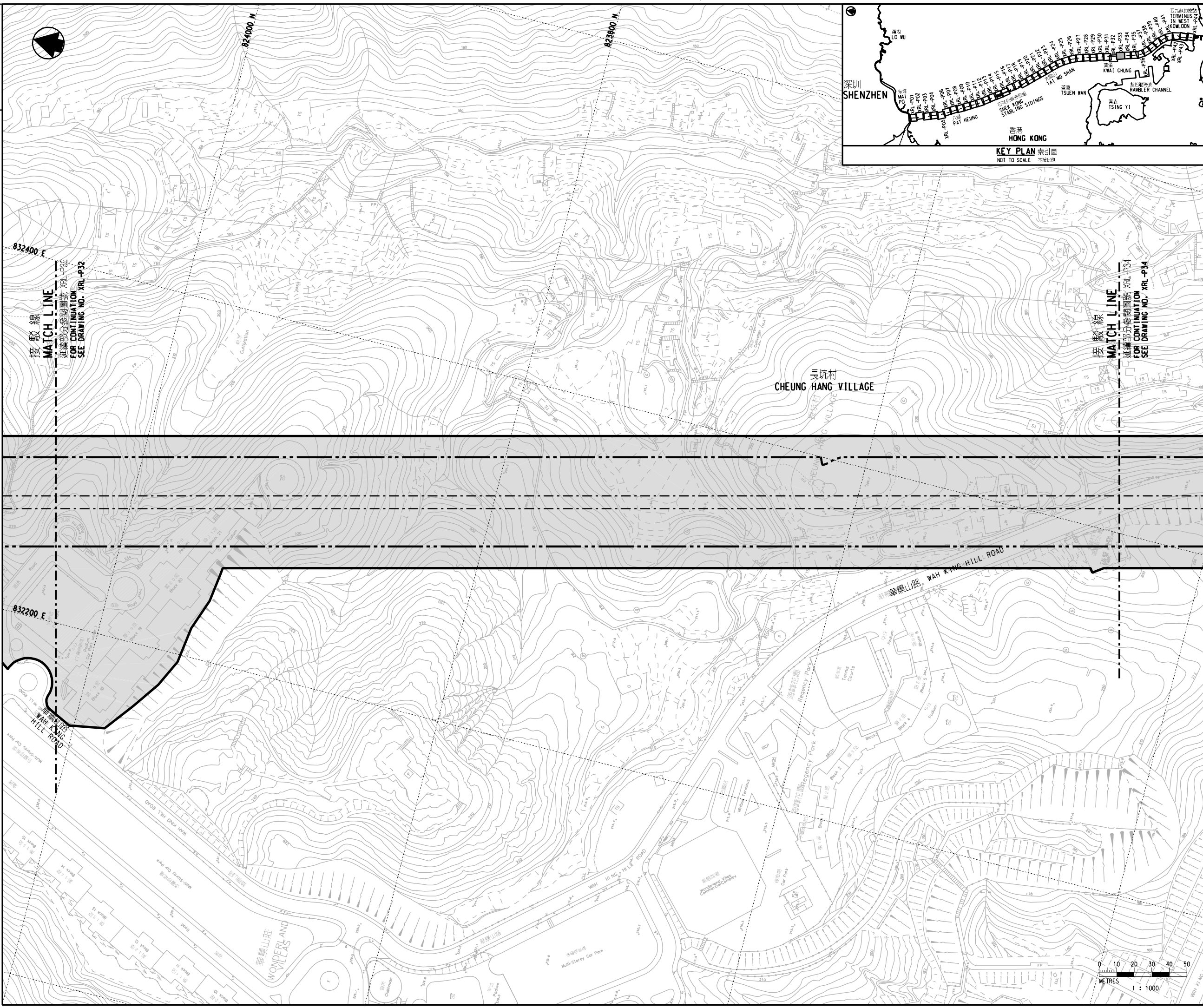






DRAWING NO. XRL - P33



圖例 LEGEND

-  方案界線
BOUNDARY OF THE SCHEME
-  擬建的路軌中線
PROPOSED RAILWAY TRACK CENTRE LINE
-  擬建的鐵路車站
PROPOSED RAILWAY STATION
-  就建築工程 (包括在方案界線以外進行的建築工程) 與方案或鐵路營運或維修不相容, 可行使建築圖則或建築工程展開的控制的土地範圍
AREA OF LAND ON WHICH CONTROL OF BUILDING PLANS OR COMMENCEMENT OF BUILDING WORKS (INCLUDING BUILDING WORKS OUTSIDE THE BOUNDARIES OF THE SCHEME) WHICH ARE INCOMPATIBLE WITH THE SCHEME OR THE OPERATION OR MAINTENANCE OF THE RAILWAY MAY BE REQUIRED

接駁線
MATCH LINE
FOR CONTINUATION
SEE DRAWING NO. XRL-P32

接駁線
MATCH LINE
FOR CONTINUATION
SEE DRAWING NO. XRL-P34

長坑村
CHEUNG HANG VILLAGE

華雲山路
WAH KUNG HILL ROAD

華雲山莊
WONDERS AND VIEWS

海鏡花園
Regency Park

修改表
TABLE OF AMENDMENTS

修改 REV	日期 DATE	繪圖 BY	校對 SUB	批准 APP	說明 DESCRIPTION

核准發出
APPROVED FOR ISSUE

發出日期
DATE OF ISSUE

路政署
鐵路拓展處處長(2)
GOVERNMENT ENGINEER/
RAILWAY DEVELOPMENT (2)
HIGHWAYS DEPARTMENT

圖則名稱
DRAWING TITLE

廣深港高速鐵路香港段
鐵路條例(第519章)
控制建築圖則及工程展開圖則
44頁的第33頁
HONG KONG SECTION OF
GUANGZHOU - SHENZHEN - HONG KONG
EXPRESS RAIL LINK
RAILWAYS ORDINANCE (CHAPTER 519)
CONTROL OF BUILDING PLANS AND
COMMENCEMENT OF WORK PLAN SHEET 33 OF 44

圖號
DRAWING NO.

XRL - P33

比例
SCALE

1:1000 (A1)
或如顯示
OR
AS SHOWN



香港特別行政區政府
THE GOVERNMENT OF THE HONG KONG
SPECIAL ADMINISTRATIVE REGION

路政署
HIGHWAYS DEPARTMENT

鐵路拓展處
RAILWAY DEVELOPMENT OFFICE

